

2019

25th

ANNIVERSARY

1994 - 2019

ROBE®

ONLINE



PROFILE™

PROFILE FS™

WASH™

iPointe®

Super Spikie™

Silver Scan™

FOR

History Introduction

Robe's relatively meteoric trajectory in the world of moving light manufacturing began when founders Ladislav Petrek and Josef Valchar first met in 1992.

United by a passion for music and a hunger and curiosity for technology, the two became firm friends, and by the end of 1993 decided to start a new business venture designing and marketing lighting effects products!

'Robe Show Lighting' was born!

Initially the company found success as an OEM manufacturer, producing high quality, well-engineered moving light products for several leading European brands.

It wasn't long before the ambitious young company – already making an impact on the international scene – decided to launch 'Robe' as a quality brand in its own right at the SIB expo in Rimini, Italy in 2002.

With a commitment to listening to what the market wants and needs, designing and producing innovative, ground-breaking and solidly reliable products – and being friendly and approachable - Robe quickly became a global market leader in its field.

It has remained independent throughout and worked hard to gain and retain the respect of many enthusiasts, fans and friends along the way.

Integral to this success has been the establishment of a dynamic global dealer and distributor network that co-ordinates sales in over 100 countries worldwide. All of these – many of whom have been there from day one - share the same core values of hard work and developing an excellent rapport with end users.

Robe has been responsible for many technical firsts including being the first brand to fully and genuinely embrace the potential of greener technologies – making 'smaller-brighter-lighter' fixtures that cost less to run and are friendlier to the environment, both in their production and use.

In 2014 Robe celebrated its 20th anniversary in style with a large gala dinner in the Robe Arena at the PLASA expo, London, which was a month after the launch of what became the company's first truly signature product, the BMFL Spot.



BMFL Spot was the first in a series of truly revolutionary 'multifunctional' moving light products which raised the bar and took the art of creative lighting using less fixtures and more imagination - up several levels.

Considered a real 'game-changer' in the moving light industry, this fixture range was the result of three years R 'n' D and extensive communication with designers, programmers, rental companies and end users on all levels.

This was followed by three other BMFL series products – the BMFL Wash, BMFL Blade and BMFL WashBeam – a family of fixtures that was also instrumental in cracking the all-important market of North America for Robe.

With America rolling, the BMFL series was also a massive winner for Robe worldwide, a luminaire that for the size, weight and multiplicity of cool features ... was a complete game -changer.

Like the LEDWash back in 2010 which became an 'industry standard' LED wash moving light with the arrival and success of the BMFL, many industry professionals who had previously not considered Robe a serious contender ... changed their minds overnight!

With such a great product, the pressure was on Josef, Ladislav and the R 'n' D team to keep coming up with innovative and relevant products.

This task is in the process of being accomplished with a lot of travelling, observing how the market is shifting and what those at the sharp end are wanting and requesting and predicting to be the next big thing and keeping up the all-important personal relationships.

The tiny continuous rotation Spikie followed in 2015; the Spiider in 2016 was another major breakthrough harnessing the power of the latest LED technologies and becoming Robe's second-generation LED wash beam ... with it's unique "Spikie" centre LED.

Meanwhile the DL series and the DL7S Profile in particular took refined LED lighting technology to new heights in theatre, performance and television lighting applications.

However, it was the MegaPointe in 2017 that sent demand for Robe products worldwide into hyperspace!

This incredible multifunctional luminaire is so super-bright, small, lightweight and positively action packed with features that it became instantly and globally THE fixture to have on your tour, stage show theatre production or TV show.

Even before this stratospheric hit of a light, Robe had expanded the main factory in Valmez, but the skyrocketing demand of MegaPointes and Spiiders fuelled the purchase and setup of a second complete factory plant in the city of Karvina around 100 Km from Valmez. This is now fully operational.

Entering its 25th year and celebrating the Silver Jubilee Robe is launching a special range of new products, the first of which will be the SilverScan.



History Introduction



Recently launched is the T1 series of products for theatre, TV and touring using Robes proprietary LED engine with additive colour mixing. Also the SuperSpikie, the bigger, brighter and bolder version of our hugely popular Spikie.

Robe is keeping the pace flowing and a keen eye on trends like the integration of lighting and video.

There is never a dull moment!

While technology and innovation are certainly one force driving the Robe equation, PEOPLE are most definitely the other.

Robe recognises teamwork on an international scale as a huge asset, and values the skills, talents, dedication, characters and spirit of the many individuals who have helped shape the company over the last 25 years.

They have all played their part in making Robe ROCK!

The 'Robe Family' is a total reality and a nice compliment to everyone's passion and long-term commitment to the brand and respect for the owners, their philosophies and their MO.

Robe is the last major moving light manufacturer that is truly 'independent' – still owned by the same individuals who founded it, who are still involved in its day to day operation – and they continue to be an inspiration to all in the ever-growing 'Robe Family'.

History Introduction

1990–93

Ladislav Petřek was importing lighting effects from Europe and realised there was a growing market for lighting installations opening up post Communism. He was also designing and building his own lighting effects when Josef Valchař – newly graduated from Ostrava Technical University, joined his company as a Sales Manager. In 1993 they started to design their first scanner lights.



1994

Josef wanted to develop an entire product range and sell into other parts of Europe, so the two launched a new joint venture – Robe Show Lighting. Robe's first Prolight+Sound exhibition landed their first OEM



customer, and they started building scanners and other DMX controlled fixtures.

1995

At SIB Rimini in 1995 new scanners were launched using the first generation of stepper motors – hugely increasing reliability. Robe expanded rapidly to 25 full time employees and bought a 1 000 square metre office in Hažovice near Rožnov pod Radhoštěm.



1999

A period of steady and sustainable growth culminated in the next technological breakthrough – the introduction of the 250 Spot and Wash XT moving heads. Robe was approached by a leading Italian manufacturer to produce an entire range of products.



2000

In 2000 Robe landed several other major European brands as OEM clients, tripling the previous annual turnover. 575 XT Spot and 575 XT Wash fixtures was launched.



2001

Robe acquired its current factory premises in Valašské Meziříčí which was completely gutted, modernised and energised as a new high tech production facility.



2002

'Robe' launched as a brand in its own right at the SIB exhibition in Rimini. PLASA 2002 was the launch of Robe's new generation of moving lights – the AT (Advanced Technology) Series. Robe's own distributor network expanded rapidly to include over 50 countries.



2003

Robe UK Ltd., Robe America and Robe Italia were established to exclusively supply and market in these key regions. Robe's ColorSpot and ColorWash 1200 AT products were launched and quickly became a cornerstone of the AT Series.



2004

Robe introduced the DT Series, a new concept in digital lighting, recognising the growing convergence between the mediums of video and lighting.

2005

Anolis – Robe's architectural LED lighting brand and 'sister' company was launched.



2006

The ColorSpot 2500E AT – Robe's largest spot fixture to date was launched.



2007

Robe America was renamed "Robe Lighting Inc." In May 2007, the new 1 800 square metre R 'n' D Centre was opened at Valašské Meziříčí. At PLASA, Robe Show Lighting became "Robe lighting" and the company was completely re-branded, reflecting the diversification of its product range and markets.

2008

Final launch of the DigitalSpot 5000 DT, first in the brand new digital lighting range.

2009

Robe bought DIOFLEX, its long term PCB and electronic parts supplier. A new series of outdoor LED fixtures was launched. Robe presented the amazing new ROBIN (Robe Innovative Concept) range of moving light products based on the principals of 'smaller-lighter-brighter'... and more eco-friendly.



2010



The reconstruction of a new building – "the old bakery" – in Valašské Meziříčí was completed and all the offices in Hážovice were integrated on the one site together with production. The new LEDWash Series rocked the market with the now legendary LEDWash 600.

2011

The MMX Spot utilizing an innovative Dual Graphic Wheel concept brought a world of brand new creative possibilities to entertainment industry lighting.



2012

The fabulous new showroom, demo area and hospitality facility in Valmez was finished. The DL Series saw the world's first RGBW LED light source moving head successfully launched.

2013

Robe was the main sponsor and co-organiser of the Showlight 2013 conference in picturesque Český Krumlov. Robe Middle East Trading LLC was established as a new subsidiary in the UAE. The ROBIN Pointe multi-purpose fixture was launched at Prolight+Sound and enjoyed phenomenal success, soon becoming Robe's best seller to date.



2014



The BMFL is launched. Bright Multi-Functional Luminaire- a brand new mega-bright signature fixture that has been three years in envelopment... designed to address the creative requirements of LDs working on all levels of all sectors. In Singapore was opened another new subsidiary office for Robe Lighting Asia Pacific Pte.Ltd.

2015

Robe opened its 5th subsidiary office in Paris – Robe lighting France SAS – which exceeded all performance expectations in its first year of trading. Robe's 6th International Distributor's Conference was well attended and facilitated excellent feedback from multiple markets around the world.



2016

At the Prolight+Sound expo in Frankfurt Robe presented its biggest exhibition stand to date occupying almost 500 sq m, which re-created an iconic and 'classic town square' environment, complete with two live show areas. Robe won a coveted PIPA (Prolight+Sound International Press Award) for the BMFL WashBeam in the 'Lighting' category. The factory premises extension continued with new buildings and extensive refurbishments to the factory area.



2017

Robe lighting announced a new wholly-owned subsidiary - Robe Deutschland GmbH - which will be based in Munich and have a regional sales force covering the entire country. Robe goes Mega with the global launch of its much anticipated new multi-functional moving light fixture ... the MegaPointe! MegaPointe is set to define new standards and expectations in moving light technology...



2018



2018 was characterised by some truly spectacular exhibition stand designs ... kicking off at Prolight+Sound in Frankfurt and concluding at LDI in Las Vegas ... with more promised – and anticipated – for the coming year!

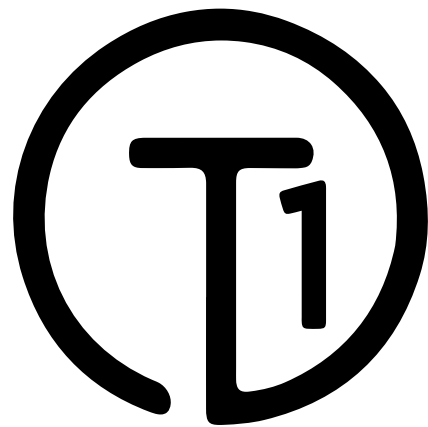
SuperSpikie and T1 were two of the amazing new products

launched and RoboSpot MDC (Multi Device Control) was another important development in 2018.

Back at HQ in the Czech Republic, we opened a brand new and fully equipped factory at Karvina, creating more jobs and a new multiple production line facility working in unison with the main factory in Valmez.

This will assist with the huge increase in demand worldwide for products in all ranges... in particular the MegaPointe and Spiider.





Like the original lamp of the same name, the Robe T1 is fast becoming just as influential in the world of stage and studio lighting.

The result of extensive collaboration with lighting professionals throughout the world, T1, in whichever format required, provides a set of features and control to perfect any lighting design.

Incorporating new technologies and unique innovations, including:

MSL™ - Multi-Spectral Light source, adjustable CCT from 2.700K to 8.000K, CRI 90+, 10.075 lm

DataSwatch™ - Fast selection of the most trusted colours & tones

L3™ - (Low Light Linearity) Imperceptible 18 bit dimming for ultra smooth fade to black

EMS™ - Sharp, accurate shake-free Pan & Tilt movement

Cpulse™ - flicker-free source management for all vision systems

RCC™ - Robe Colour Calibration. Precise colour performance repeatability

Small, light, quiet & bright T1 - designed by you, for you, the only ONE you need.



Re-invented....

ROBE®



T1. The new ONE and only fixture you need for theatre, television and touring and now with the option to be connected to the Robe innovative RoboSpot system.

Specifically designed to fulfil the challenging requirements of these diverse applications within one comprehensive fixture. The new revolutionary MSL™ (Multi-Spectral Light) LED engine's output reaches 10.075 lumens. It's impressively bright.

T1 Profile is full of theatrical subtlety. With CMY colour control, DataSwatch™ filters containing a selection of pre-programmed colours via the new generation RCC™ (Robe Colour Calibration) algorithm and a wide ranging 2700K to 8000K CCT control, all variations of colour are possible for even the most demanding designers. The precise needs of theatrical dimming are catered to with our super smooth Robe 18-bit dimming system. In addition, the high CRI of 90+ provides natural skin tones.

For television work, we have included a plus and minus green channel and Cpulse™ special flicker-free management for all vision systems such as HD and UHD cameras. All this combined with our crisp framing shutter system, full zoom range of 0,5° and 10° variable frosts, specially designed breakup and aerial gobos, animation wheel and prism, gives you total control of your designs in theatre, television and touring.

You need only ONE. T1.



Technical Specification

- Light source type: MSL™ 550 W Multi-Spectral LED engine
- LED life expectancy: min. 30.000 hours
- CRI 90+
- Control: Automatic and remote on/off
- Light source warranty: 3 years or 20.000 hours
- Robe's proprietary optical design
- High - efficiency zoom optical system, ratio 7:1
- Zoom range: 7° - 49°, covers favoured field angles of most Theatre and TV lights
- Fixture total lumen output: up to 10.075 lm
- Factory calibrated whites and colours via the new RCC™ (Robe Colour Calibration) system, on-call self-recalibration of the LED engine without the use of any external tool (patent pending)
- Colour mixing: additive with CMY control mode
- Variable CTO: 2.700K - 8.000K
- DataSwatch™ filters: pre-programmed 237 colours and tones including most used whites 2.700K, 3.200K, 4.200K, 5.600K and 8.000K
- Tungsten lamp effect: 750W, 1.000W, 1.200W, 2.000W, 2.500W lamp emulation
- + - Green correction function
- Adjustable CRI from 80 to 90+
- Framing shutters: Patented framing shutters module with 4 individually positionable blades plus rotation of the complete frame system +-60°
- Rotating gobo wheel: 7 rotating, indexable and replaceable breakup and aerial gobos + open, all gobos specially selected for theatrical and TV productions
- Animation wheel: Aluminium animation wheel, used alone or in combination with gobos, rotating in both directions at variable speed
- Prism: 6 - facet 8° prism rotating in both directions at variable speed
- Iris: Motorized, stepless, pulse effects up to 3 Hz
- Frosts: very light 0,5° for instant softening of the projected gobo or framing shutters and medium 10° for even wash, both selected specifically for theatre and TV use
- Motorized zoom and focus
- Electronic strobe effect with variable speed up to 20 Hz
- Pre-programmed random strobe & pulse effects
- L3™ - (Low Light Linearity) Imperceptible 18 bit dimming for ultra smooth fade to black
- Extremely quiet operation suitable for all types of production in Theatre and TV
- Cpulse™ special flicker free management for HD and UHD cameras
- Low maintenance requirements due to the sealed effect part of the head, no smoke or dust can get inside and adhere to the optical elements such as gobos and lenses
- EMST™ - Electronic Motion Stabiliser - patented technology for Pan and Tilt movements, reducing vibrations from audio outputs, truss movement, sprung or suspended floors
- Setting & Addressing: ROBE Navigation System 2 (RNS2)
- Display: QVGA Robe touch screen with battery backup, gravitation sensor for auto screen positioning, operation memory service log with RTC, stand-alone operation with 3 editable programs (each up to 100 steps), built-in analyser for easy fault finding
- Protocols: USITT DMX-512, RDM, ArtNet, MA Net, MA Net2, sACN
- Web server
- Wireless CRMX™ technology from Lumen Radio: On request
- DMX Protocol modes: 3
- Control channels: 49, 33, 53
- Pan movement: 540°, Tilt movement: 280°
- Power consumption: max. 650 W at 230 V / 50 Hz (all LEDs On)
- Power in connector: Neutrik powerCON TRUE1
- DMX and RDM data in/out: Locking 3-pin & 5-pin XLR
- Ethernet port in: RJ45
- Weight: 24.3 kg (53.6 lbs)
- Rigging:
 - Mounting positions: Horizontally or vertically
 - Universal operating position
 - Mounting points: 2 pairs of 1/4-turn locking points
 - 2x Omega adaptors with 1/4-turn quick locks
 - Safety cable attachment point
 - Pan and Tilt transport locks
- Gel frame adaptor included
- Accessories:
 - 7.5° Gel Frame, Doughty Trigger Clamp, Safety wire, Single Top Loader Case, Dual Top Loader Case, Foam Shell
- Legal:
 - T1 Profile™ is a Trademark of Robe lighting s. r. o.
 - T1 Profile™ is patented by Robe lighting s. r. o. and is protected by one or more pending or issued patents.





T1. The new ONE and only fixture you need for theatre, television and touring and now with the option to be connected to the Robe innovative RoboSpot system.

The T1 Profile FollowSpot is equipped with the digital camera on the head and can be connected with the RoboSpot BaseStation for off-stage follow spot operation. Specifically designed to fulfil the challenging requirements of these diverse applications within one comprehensive fixture. The new revolutionary MSL™ (Multi-Spectral Light) LED engine's output reaches 10.075 lumens. It's impressively bright. T1 Profile is full of theatrical subtlety. With CMY colour control, DataSwatch™ filters containing a selection of pre-programmed colours via the new generation RCC™ (Robe Colour Calibration) algorithm and a wide ranging 2700K to 8000K CCT control, all variations of colour are possible for even the most demanding designers. The precise needs of theatrical dimming are catered to with our super smooth Robe 18-bit dimming system. In addition, the high CRI of 90+ provides natural skin tones.

For television work, we have included a plus and minus green channel and Cpulse™ special flicker-free management for all vision systems such as HD and UHD cameras. All this combined with our crisp framing shutter system, full zoom range of 0,5° and 10° variable frosts, specially designed breakup and aerial gobos, animation wheel and prism, gives you total control of your designs in theatre, television and touring.

You need only ONE. T1.



Technical Specification

- Light source type: MSL™ 550 W Multi-Spectral LED engine
- LED life expectancy: min. 30.000 hours
- CRI 90+
- Control: Automatic and remote on/off
- Light source warranty: 3 years or 20.000 hours
- Robe's proprietary optical design
- High - efficiency zoom optical system, ratio 7:1
- Zoom range: 7° - 49°, covers favoured field angles of most Theatre and TV lights
- Fixture total lumen output: up to 10.075 lm
- Factory calibrated whites and colours via the new RCC™ (Robe Colour Calibration) system, on-call self-recalibration of the LED engine without the use of any external tool (patent pending)
- Colour mixing: additive with CMY control mode
- Variable CTO: 2.700K - 8.000K
- DataSwatch™ filters: pre-programmed 237 colours and tones including most used whites 2.700K, 3.200K, 4.200K, 5.600K and 8.000K
- Tungsten lamp effect: 750W, 1.000W, 1.200W, 2.000W, 2.500W lamp emulation
- + - Green correction function
- Adjustable CRI from 80 to 90+
- Framing shutters: Patented framing shutters module with 4 individually positionable blades plus rotation of the complete frame system +-60°
- Rotating gobo wheel: 7 rotating, indexable and replaceable breakup and aerial gobos + open, all gobos specially selected for theatrical and TV productions
- Animation wheel: Aluminium animation wheel, used alone or in combination with gobos, rotating in both directions at variable speed
- Prism: 6 - facet 8° prism rotating in both directions at variable speed
- Iris: Motorized, stepless, pulse effects up to 3 Hz
- Frosts: very light 0,5° for instant softening of the projected gobo or framing shutters and medium 10° for even wash, both selected specifically for theatre and TV use
- Motorized zoom and focus
- Electronic strobe effect with variable speed up to 20 Hz
- Pre-programmed random strobe & pulse effects
- L3™ - (Low Light Linearity) Imperceptible 18 bit dimming for ultra smooth fade to black
- Extremely quiet operation suitable for all types of production in Theatre and TV
- Cpulse™ special flicker free management for HD and UHD cameras
- Low maintenance requirements due to the sealed effect part of the head, no smoke or dust can get inside and adhere to the optical elements such as gobos and lenses
- EMST™ - Electronic Motion Stabiliser - patented technology for Pan and Tilt movements, reducing vibrations from audio outputs, truss movement, sprung or suspended floors
- Setting & Addressing: ROBE Navigation System 2 (RNS2)
- Display: QVGA Robe touch screen with battery backup, gravitation sensor for auto screen positioning, operation memory service log with RTC, stand-alone operation with 3 editable programs (each up to 100 steps), built-in analyser for easy fault finding
- Protocols: USITT DMX-512, RDM, ArtNet, MA Net, MA Net2, sACN
- Web server
- Wireless CRMX™ technology from Lumen Radio: On request
- DMX Protocol modes: 3
- Control channels: 49, 33, 53
- Pan movement: 540°, Tilt movement: 280°
- Power consumption: max. 650 W at 230 V / 50 Hz (all LEDs On)
- Power in connector: Neutrik powerCON TRUE1
- DMX and RDM data in/out: Locking 3-pin & 5-pin XLR
- Ethernet port in: RJ45
- Weight: 24.3 kg (53.6 lbs)
- Rigging:
 - Mounting positions: Horizontally or vertically
 - Universal operating position
 - Mounting points: 2 pairs of 1/4-turn locking points
 - 2x Omega adaptors with 1/4-turn quick locks
 - Safety cable attachment point
 - Pan and Tilt transport locks
- RoboSpot Camera and Gel frame adaptor included
- Accessories:
 - 7.5° Gel Frame, Doughty Trigger Clamp, Safety wire, Single Top Loader Case, Dual Top Loader Case, Foam Shell
- Legal:
 - T1 Profile FS™ is a Trademark of Robe lighting s. r. o.
 - T1 Profile FS™ is patented by Robe lighting s. r. o. and is protected by one or more pending or issued patents.





T1 Wash. The new ONE and only wash fixture you need for theatre, television and touring.

Specifically designed to fulfil the challenging requirements of these diverse applications within one wash fixture. The new revolutionary MSL™ (Multi-Spectral Light) LED engine provides an output reaching 10.000 lumens. It's impressively bright.

Using either the Fresnel or PC lens supplied, T1 Wash is full of theatrical subtlety. With CMY colour control, DataSwatch™ filters containing a selection of pre-programmed colours via the new generation RCC™ (Robe Colour Calibration) algorithm and a wide ranging 2700K to 8000K CCT control - all variations of colour are possible for even the most demanding designers. The precise needs of theatrical dimming are catered to with our new L3™ Low Light Linearity dimming system. In addition, the high CRI of 90+ provides natural skin tones.

For television work, we have included a plus and minus green channel and Cpulse™ flicker-free source management for all vision systems such as HD and UHD cameras. All this combined with our precise +/- 90° rotatable individually controlled internal barndoor system, a zoom range of 7° to 50°, beam shaper, graduated scrim with 180° rotation and light and medium frosts, the result is total control of your designs in theatre, television and touring.

You need only ONE. T1.



Technical Specification

- Light source type: 550 W RGBAL LED engine
- LED life expectancy: min. 20.000 hours
- Control: Automatic and remote on/off
- Light source warranty: 3 years or 20.000 hours
- Robe's proprietary optical design
- High - efficiency zoom optical system, ratio 7:1
- Zoom range: 7° - 50°
- Fixture total lumen output: 10.075 lm
- Colour mixing: CMY/RGB or RGBAL
- Variable CTO: 2.700K - 8.000K
- Virtual Colour Wheel: preprogrammed 237 colours including whites (2.700K, 3.200K, 4.200K, 5.600K and 8.000K)
- Tungsten lamp effect at whites: 2.700K and 3.200K
- Internal barndoors: individual position control of 4 "doors", +/- 90° module rotation (Patent pending)
- Scrim: Graduated filter position control, +/- 180° module rotation (Patent pending)
- Frost: light + medium
- Motorized zoom
- Beam shaper: 2:1 - 3:1
- Edge colour correction
- Electronic strobe effect with variable speed up to 20 Hz
- Pre-programmed random strobe & pulse effects
- L3™ - (Low Light Linearity) Imperceptible 18 bit dimming for ultra smooth fade to black
- Extremely quiet operation suitable for all types of production in Theatre and TV
- Cpulse™ special flicker free management for HD and UHD cameras
- Low maintenance requirements due to the sealed effect part of the head, no smoke or dust can get inside and adhere to the optical elements such as gobos and lenses
- EMS™ - Electronic Motion Stabiliser - patented technology for Pan and Tilt movements, reducing vibrations from audio outputs, truss movement, sprung or suspended floors
- Setting & Addressing: ROBE Navigation System 2 (RNS2)
- Display: QVGA Robe touch screen with battery backup, gravitation sensor for auto screen positioning, operation memory service log with RTC, stand-alone operation with 3 editable programs (each up to 100 steps), built-in analyser for easy fault finding
- Protocols: USITT DMX-512, RDM, ArtNet, MA Net, MA Net2, sACN
- Web server
- Wireless CRMX™ technology from Lumen Radio
- DMX Protocol modes: 3
- Control channels: 35, 24, 39
- Pan/Tilt resolution: 16 bit
- Colour mixing: 8 or 16 bit (internal 18 bit)
- Internal barndoor module movement & rotation: 8 bit
- Frost: 8 bit
- Zoom: 8 or 16 bit
- Edge colour correction: 8 bit
- Dimmer: 8 or 16 bit (internal 18 bit)
- Pan movement: 540°
- Tilt movement: 280°
- Power consumption: max. 650 W at 230 V / 50 Hz
- Typical power consumption: 160 - 215 W (one colour = full)
- Power in connector: Neutrik powerCON TRUE1
- DMX and RDM data in/out: Locking 3-pin & 5-pin XLR
- Ethernet port in: RJ45
- Weight: 22.7 kg (48.5 lbs)
- Rigging: Mounting positions: Horizontally or vertically, Universal operating position, Mounting points: 2 pairs of 1/4-turn locking points, 2x Omega adaptors with 1/4-turn quick locks, Safety cable attachment point, Pan and Tilt transport locks
- Gel frame adaptor included
- Accessories: Gel frame, Module of PC lens / Module of fresnel lens, Doughty Trigger Clamp, Safety wire 35 kg, Single Top Loader Case, Dual Top Loader Case, Foam Shell
- Legal: T1 Wash™ and T1 Wash PC™ are the Trademarks of Robe lighting s. r. o. T1 Wash™ and T1 Wash PC™ are patented by Robe lighting s. r. o. and are protected by one or more pending or issued patents





OUR NEW OUTDOOR POINT !

Robe's brand new IP65 rated iPointe combines innovative ingress protection with the spectacular effect features of the MegaPointe - the best product on the market in its category. Perfect for festivals, concerts and outdoor events and any scenario needing to deal with inclement or unpredictable weather - the iPointe is a bright, powerful multifunctional luminaire that works equally well as a beam, spot, effect and wash fixture. The ingenious ingress protection has been designed and developed diligently over two years by Robe's R'n'D team and comprises a series of interconnected filters and air chambers which prevent water ingress into the fixture.

There's also a unique new dust-free environment for the optical, gobo and colour systems thus eliminating the need for frequent cleaning and maintenance.

The iPointe's impressive lightsource is a 310W lamp, with a lifetime of up to 4.000 hours, specially developed for Robe by Osram. It produces a brilliant, crystal clear, razor-edged beam, adjustable from a punchy 1.8 out to a wide 42 degree spot. The beam can also be accurately shaped using the innovative framing shutters emulation. Both static and rotating glass gobos produce precision in-air effects and projected images with a sharp, high-contrast, flat field. An inventive new effects engine can produce 12 varying beam and 'flower' effects, all of this taking a winning combination of creativity and weather-resistance to new levels.

Thanks to its design, the iPointe offers seamless cross-usage with MegaPointe, featuring the same DMX control, but in well-protected, water resistant housing.

Pointe, MegaPointe, iPointe. The best all-in-one product range !



Technical Specification

- Lamp: Discharge short arc lamp with integrated reflector
- Approved model: Osram Sirius HRI 310W RO
- Lifetime:
 - 2.500 hours @ 310W Standard mode
 - 3.500 hours @ 230W Eco mode
 - 4.000 hours @ LL mode with auto recovery
- CRI: 80/90
- CCT: Light output 7.200K
Lamp 8.500K
- Robe's proprietary optical design (Patent pending)
- Zoom optical system: 14:1
- Zoom range: 1.8° - 21° beam mode
3° - 42° spot mode
- Output lens diameter: 150 mm
- Fixture total lumen output: 11.628 lm
- Light output:
 - Beam mode 1.8°: 1.584.660 lx @ 5 m
1.8°: 99.040 lx @ 20 m
 - Spot mode 3°: 381.540 lx @ 5 m
3°: 23.846 lx @ 20 m
- Colour mixing mode: CMY
- Colour Wheel: 13 dichroic filters + white
- Rotating gobo wheel: 9 rotating gobos + open, indexable and replaceable gobos
- Static gobo wheel: 14 gobos + open
- Animation wheel: Aluminium animation wheel, used alone or in combination with gobos, rotating in both directions at variable speed
- Innovative Effect Engine consisting of 6 prisms placed on two wheels, producing 12 various Beam and Flower effects
- Beam shaper emulating framing shutters and creating rectangular beam shapes, rotatable and indexable (Patent pending)
- Frost: variable 1° (light) and 5° (medium)
- Motorized zoom and focus
- Remote Hot-spot control: adjustable from 5:1 to 2.5:1 in spot mode and from 7:1 to 2.7:1 in beam mode
- Pre-programmed random strobe & pulse effects
- Setting & Addressing: ROBE Navigation System 2 (RNS2)
- Display: QVGA Robe screen with battery backup, gravitation sensor for auto screen positioning, operation memory service log with RTC, built-in analyser for easy fault finding, NFC app controller
- Protocols: USITT DMX-512, RDM, ArtNet, MA Net, MA Net2, sACN
- Web server
- Wireless CRMX™ technology from Lumen Radio: standard
- DMX Protocol modes: 2
- Control channels: 39, 34
- Pan/Tilt resolution: 16 bit
- Colour wheel positioning: 8 or 16 bit
- CMY: 8 bit
- CRI Selection: 80 or 90
- Rotating gobo wheel positioning: 8 bit
- Gobo indexing & rotation: 8 or 16 bit
- Static gobo wheel positioning: 8 bit
- Animation wheel: 8 bit
- Animation wheel rotation: 8 or 16 bit
- Prism indexing & rotation: 8 bit
- Frost: 8 bit
- Zoom: 8 or 16 bit
- Focus: 8 or 16 bit
- Hot-Spot: 8 bit
- Dimmer: 8 or 16 bit
- Pan movement: 540°, Tilt movement: 265°
- EMS™: Electronic Motion Stabilizer system for Pan & Tilt reducing beam deviation caused by truss movement or vibration (Patent pending)
- Power consumption: 550 W at 230 V / 50 Hz
- Power in connector: IP65 Neutrik powerCON TRUE1
- DMX and RDM data in/out: IP65 Locking 3-pin & 5-pin XLR connectors
- Ethernet port in: IP65 RJ45 connector
- Weight: 38 kg (83.8 lbs)
- Ingress protection rating: IP65
- Rigging: Mounting positions: Horizontally or vertically, Universal operating position, Mounting points: 2 pairs of 1/4-turn locking points, 2x Omega adaptors with 1/4-turn quick locks, Pan and Tilt transport locks, Safety cable attachment point
- Accessories: Lamp Osram Sirius HRI 310W RO, Doughty Trigger Clamp, Safety wire 50 kg, Dual Top Loader Case, Single Top Loader Case, Foam Shell
- Legal: iPointe® is Registered Trademark of Robe lighting s. r. o. iPointe® is patented by Robe lighting s. r. o. and is protected by one or more pending or issued patents.





MEGA bright with MEGA features and still compact. The MegaPointe from Robe.

OUR NEW REFERENCE POINT!

Our all-new MegaPointe elevates the original all-in-one fixture to a whole new level. Unleash your creativity using the bright sharp parallel beams, excellent gobo projection, precise movement, smooth CMY colour mixing and dimming plus a multitude of beam splitting, wash and shaping effects.

The Robe R&D team worked with Osram to provide a 470W lamp that aligns perfectly with the cutting edge optical system. This design provides a brilliant, crystal clear, razor-edged beam, adjustable from a punchy 1.8 out to a wide 42 degree zoom.

Both static and rotating (glass) gobos produce precision in-air effects or projected images with a sharp, high-contrast, flat field. The newly designed effects engine can produce 12 varying beam and 'flower' effects.

The beam can also be shaped using innovative shutter emulation, further creating a whole new blend of content & creativity.



Technical Specification

- Lamp: Discharge short arc lamp with integrated reflector
- Approved model: Osram Sirius HRI 470W RO
- Lifetime: 1.500 hours @ 470W Standard mode, 2.000 hours @ 380W Eco mode
- CRI: 80/90
- CCT Light Output 6.300K, CCT Lamp: 7.500K
- Robe's proprietary optical design (Patent pending)
- Zoom optical system: 14:1
- Zoom range: 1.8° - 21° beam mode, 3° - 42° spot mode
- Output lens diameter: 150mm
- Fixture total lumen output: 20.375lm
- Light output:
 - Beam mode 1.8°: 2.200.000 lx @ 5m
 - Beam mode 1.8°: 137.500 lx @ 20m
 - Spot mode 3°: 715.300 lx @ 5m
 - Spot mode 3°: 44.710 lx @ 20m
- Colour mixing mode: CMY
- Colour Wheel: 13 dichroic filters + white
- Rotating gobo wheel: 9 rotating + open, indexable and replaceable gobos
- Static gobo wheel: 14 gobos + open
- Animation wheel: Aluminium animation wheel, used alone or in combination with gobos, rotating in both directions at variable speed
- Innovative Effect Engine consisting of 6 prisms placed on two wheels, producing 12 various Beam and Flower effects (Patent pending)
- Beam shaper emulating framing shutters and creating rectangular beam shapes, rotatable and indexable (Patent pending)
- Frost: variable 1° (light) and 5° (medium)
- Motorized zoom and focus
- Remote Hot-spot control: adjustable from 5:1 to 2.5:1 in spot mode and from 7:1 to 2.7:1 in beam mode (Patent pending)
- Pre-programmed random strobe & pulse effects
- Setting & Addressing: ROBE Navigation System 2 (RNS2)
- Display: QVGA Robe touch screen with battery backup, gravitation sensor for auto screen positioning, operation memory service log with RTC, stand-alone operation with 3 editable programs (each up to 100 steps), built-in analyser for easy fault finding
- Protocols: USITT DMX-512, RDM, ArtNet, MA Net, MA Net2, sACN
- Wireless CRMXTM technology from Lumen Radio: on request
- DMX Protocol modes: 2
- Control channels: 39, 34
- Pan/Tilt resolution: 8 or 16 bit
- Colour wheel positioning: 8 or 16 bit
- Gobo indexing & rotation: 8 or 16 bit
- Animation wheel rotation: 8 or 16 bit
- Zoom: 8 or 16 bit
- Focus: 8 or 16 bit
- Dimmer: 8 or 16 bit
- Pan movement: 540°, Tilt movement: 265°
- EMSTM: Electronic Motion Stabilizer system for Pan & Tilt reducing beam deviation caused by truss movement or vibration (Patent pending)
- Power consumption: 670 W at 230 V / 50 Hz
- Power in connector: Neutrik powerCON TRUE1
- DMX and RDM data in/out: Locking 3-pin & 5-pin XLR
- Ethernet port in: RJ45
- Weight: 22 kg (48.5 lbs)
- Rigging
 - Mounting positions: Horizontally or vertically, Universal operating position, Mounting points: 2 pairs of 1/4-turn locking points, 2x Omega adaptors with 1/4-turn quick locks, Pan and Tilt transport locks, Safety cable attachment point
- Accessories:
 - Lamp Osram Sirius HRI 470W RO, Doughty Trigger Clamp, Safety wire 35 kg, Single Top Loader Case Horizontal, Dual Top Loader Case Vertical and Horizontal, Quad Top Loader Case Vertical, Foam Shell Single Vertical, Dual Vertical and Single Horizontal
- Legal:
 - MegaPointe® is Registered Trademark of ROBE lighting s. r. o.
 - MegaPointe® is patented by ROBE lighting s. r. o. and is protected by one or more pending or issued patents.





Like the Spikie?

You'll LOVE the SuperSpikie.

Bigger, brighter and bolder, the SuperSpikie takes the look to another level.

Four times brighter than the original Spikie and with the addition of rotating gobos – this effects machine has even more looks to blast through its 165mm lens front.

The Zoom is bigger too. From a 3,5° beam to a soft wash at 42°, the CMY or RGBW colour mix looks rich.

In a fraction of a second the SuperSpikie can change from a sharp beam to a smooth wash light producing a single shadow light output, which is an important feature for TV and theatre productions.

In-air effects using different combinations of the gobos, prism or flower effect feature, make this a versatile stage, set or studio piece.

With the ability to mount it in any position, the fast 360° continuous pan and tilt motors add yet another dimension.



Technical Specification

- Light source type: 250W RGBW LED multichip
- LED life expectancy: min. 20.000 hours
- Typical lumen maintenance: 70% @ 20.000 hours
- Robe's proprietary optical design
- High - efficiency zoom optical system, ratio 12:1
- Zoom range: 3,5° - 35° beam mode, 5° - 42° wash mode
- Output lens diameter: 165 mm
- Fixture total lumen output: 4.100 lm
- Colour mixing mode RGBW or CMY
- Variable CTO: 2.700K - 8.000K
- Virtual Colour Wheel: with 66 preset swatches
- Tungsten lamp effect at whites: 2.700 K and 3.200 K (red shift and thermal delay)
- Colour rainbow effect with variable speed
- Rotating gobos: 2 rotating, indexable and replaceable, specifically designed for mid-air effects
- Innovative Flower Effect: rotating in both directions at variable speed (patent pending)
- Prism 1: 3-facet circular prism rotating in both directions at variable speeds
- Motorized zoom
- Shutter: Electronic with variable speed strobe (max.20 flashes per second)
- Pre-programmed random strobe & pulse effects
- High resolution electronic dimming: 0 - 100%
- Setting & Addressing: ROBE Navigation System 2 (RNS2)
- Display: QVGA Robe touch screen with battery backup, gravitation sensor for auto screen positioning, operation memory service log with RTC, stand-alone operation with 3 editable programs (each up to 100 steps), built-in analyser for easy fault finding
- Protocols: USITT DMX-512, RDM, Art-Net, MA Net, MA Net2, sACN
- Wireless CRMX™ technology from Lumen Radio: On request
- DMX Protocol modes: 1
- Control channels: 31
- Pan/Tilt resolution: 16 bit
- RGBW / CMY: 8 or 16 bit
- Zoom: 8 or 16 bit
- Dimmer: 8 or 16 bit (internal 18 bit)
- Pan movement range 360° with continuous rotation control
- Tilt movement range 360° with continuous rotation control
- Power supply: Electronic auto-ranging
- Power consumption: max. 330 W at 230 V / 50 Hz
- Power in/out connector: Neutrik powerCON TRUE1 in/out
- DMX and RDM data in/out: Locking 3-pin & 5-pin XLR
- Ethernet port in: RJ45
- Weight: 19 kg (41.9 lbs)
- Rigging
 - Mounting positions: Horizontally or vertically
 - Universal operating position
 - Mounting points: 2 pairs of 1/4-turn locking points
 - 2x Omega adaptors with 1/4-turn quick locks
 - Safety cable attachment point
- Accessories:
 - Doughty Trigger Clamp, Safety wire 35 kg, Single Top Loader Case, Dual Top Loader Case, Quad Top Loader Case, Foam Shell
- Legal:
 - SuperSpikie™ is a Trademark of Robe lighting s. r. o.
 - SuperSpikie™ is patented by Robe lighting s. r. o. and is protected by one or more pending or issued patents.



Photo credit: © H.Karapuda / PERCEPTO [LAB] / Paweł"Spider"Pająk



Speed, great colors and beautiful gobos have always been our top priorities. Our SilverScan celebrates 25 years of ROBE lighting fixtures and their continuing evolution.

With super-fast mirror movement, the bright and colorful SilverScan utilizes all the massive improvements technology has made and brings it back to its roots - a small form factor, good-looking performant LED-based scan.

The 350W white LED light engine, with a total lumen output up to 9.020 lm, gives an extra punchy beam with even flat field and an incredible 20.000 hours of operation.

Smooth color transition and fixed, vivid and radiant colours can be applied from the CMY mixing system and colour wheel, with 7 rotating or 9 static gobos added for projections or mid-air effects. The smooth zoom can go out to 27° at its widest while the minimum 9° zoom produces a piercing beam that can be trimmed with an ultra-fast stepless iris for punchy output.



Technical Specification

- Light source type: 350 W White LED engine
- LED life expectancy: min. 20.000 hours
- Typical lumen maintenance: 70% @ 20.000 hours
- Colour temperature: 6.500K
- Light source warranty: 3 years or 20.000 hours
- Robe's proprietary optical design
- High - efficiency zoom optical system, ratio 4,5:1
- Zoom range: 9°- 27°
- Fixture total lumen output: 9.020 lm
- Colour Wheel: 6 fixed dichroic colours + white
- Virtual Colour Wheel: with 66 preset swatches
- Rotating gobo wheel: 7 rotating, indexable, replaceable „SLOT&LOCK“ glass gobos + open
- Static gobo wheel: 9 aluminium gobos + open
- Prism: 3-facet circular rotating prism
- Iris: Motorized, stepless, pulse effects up to 3 Hz
- Frost: Variable, replaceable 20° frost filter; optional 1°, 10° and 30°
- Motorized zoom and focus
- Shutter: Electronic with variable speed strobe (max.20 flashes per second)
- High speed Pan/Tilt mirror movement
- Pre-programmed random strobe & pulse effects
- Setting & Addressing: ROBE Navigation System 2 (RNS2)
- Display: QVGA Robe touch screen with battery backup, gravitation sensor for auto screen positioning, operation memory service log with RTC, stand-alone operation with 3 editable programs (each up to 100 steps), built-in analyser for easy fault finding
- Protocols: USITT DMX-512, RDM, ArtNet, MA Net, MA Net2, sACN
- Wireless CRMXTM technology from Lumen Radio
- DMX Protocol modes: 2
- Control channels: 32, 26
- Pan/Tilt resolution: 16 bit
- CMY: 8 bit
- Colour wheel positioning: 8 bit
- Rotating gobo wheel positioning: 8 bit
- Gobo indexing & rotation: 8 or 16 bit
- Static gobo wheel positioning: 8 or 16 bit
- Iris: 8 or 16 bit
- Frost: 8 bit
- Zoom: 8 or 16 bit
- Focus: 8 or 16 bit
- Dimmer: 8 or 16 bit (internal 18 bit)
- Pan movement: 180°
- Tilt movement: 55°
- Power consumption: max. 400 W at 230 V / 50 Hz
- Power in connector: Neutric powerCON TRUE1
- DMX and RDM data in/out: Locking 3-pin & 5-pin XLR
- Ethernet port in: RJ45
- Weight: 16 kg (35.3 lbs)
- Rigging
 - Mounting positions: Horizontally or vertically, Universal operating position, Mounting points via Mounting Bracket
- Accessories
 - Safety wire 35 kg, Ceiling mounting kit, Short Bracket, Single Top Loader Case
- Legal
 - SilverScanTM is a Trademark of Robe lighting s. r. o.
 - SilverScanTM is patented by Robe lighting s. r. o. and is protected by one or more pending or issued patents.



Robe's Lens Coating Technology



Our innovative lens coating technology protects soft plastic lenses against „surface scattering“ even when scrubbed repeatedly.

Because of this we have achieved a brighter output (with more contrast) and a better look.

Anti-static properties prolong the time period before the lenses will collect dust and create white maps on the lens surface.

This proven technology – originally developed to protect eyeglasses that are cleaned daily or car headlights against UV radiation as well as prevent scratches and cracks from road debris - is customized and patented specifically for entertainment needs.

It brings countless benefits including longer intervals between cleaning, bright and clear lenses, no scratches or marks, and higher light output.

Robe's Lens Coating Technology



This new lens coating technology is now standard on following products:



Tairantula™



Spider®



**LEDBeam 150™
LEDBeam 150™ FW**



**ParFect 150™ RGBW
ParFect 150™ FW RGBW**



**ParFect 150™ RGBA
ParFect 150™ FW RGBA**



iParFect 150™ FW RGBW



iParFect 150™ FW RGBA



THE INDUSTRY'S NO. 1 CHOICE !

Spiider, a superbright next generation of LED WashBeam luminaires, using 18 x 40 Watt and 1 x 60 Watt LEDs and combining it with a very efficient 12,5 :1 zoom optical system ranging from tight 4° Beam to wide 50° Wash, makes the product in its class the most powerful LED fixture on the market.

Now equipped with Robe's innovative lens coating technology which brings benefits such as bright and clear lenses, no scratches or marks, higher light output and longer intervals between cleaning.

Beautiful convergence of hard edge in-air effects, punchy beams and smooth homogenized wash is all encapsulated in the unique Spiider. Rich colors of 19 powerfull RGBW LEDs can create charming wash light with velvety smooth transitions thanks to internal 18bit LED dimming system.

Dynamic video effects are easily achieved by mapping individual pixels and controlled by DMX desk or media servers via sACN with internal HTP merging, DMX or by Kling-Net protocol. Unique central piece with Robe exclusive Flower Effect is driven by 60W RGBW LED multichip for new innovative sharp multicoloured spikes of light, rotating in both directions at variable speed, adding another new visual effect to the show.



Technical Specification

- Light source type: 1 x 60W RGBW and 18 x 40W RGBW LED multichips
- LED life expectancy: min. 50.000 hours
- Typical lumen maintenance: 70% @ 20.000 hours
- Robe's proprietary optical design
- Innovative lens coating technology (Patent pending)
- High - efficiency zoom optical system, ratio 12,5 : 1
- Zoom range: 4° - 50°
- Fixture total lumen output: 11.000 lm
- Light output: 50.100 lx @ 5m
- Colour mixing mode RGBW or CMY
- Individual control of each RGBW pixel
- Variable CTO: 2.700K - 8.000K
- Virtual Colour Wheel: with 66 preset swatches
- Tungsten lamp effect at whites: 2.700 K and 3.200 K (red shift and thermal delay)
- Colour rainbow effect with variable speed
- Pre-programmed pixel effects with colour, dimming and strobe chases, waves and pulses at variable speed and direction
- Innovative Flower Effect: rotating in both directions at variable speed (Patent pending)
- Strobe effect: variable speed (max.20 flashes per second)
- Pre-programmed random strobe & pulse effects
- High resolution electronic dimming: 0 - 100%
- Setting & Addressing: ROBE Navigation System 2 (RNS2)
- Display: QVGA Robe touch screen with battery backup, gravitation sensor for auto screen positioning, operation memory service log with RTC, stand-alone operation with 3 editable programs (each up to 100 steps), built-in analyser for easy fault finding
- Protocols: USITT DMX-512, RDM, Art-Net, MA Net, MA Net2, sACN, Kling-Net
- Wireless CRMX™ technology from Lumen Radio: On request
- DMX Protocol modes: 10
- Control channels: 49, 27, 33, 90, 27, 46, 91, 110, 103, 122
- Dimmer: 8 or 16 bit (internal 18 bit)
- Pan movement: 540°
- Tilt movement: 220°
- EMS™: Electronic Motion Stabilizer system for Pan & Tilt reducing beam deviation caused by truss movement or vibration (Patent pending)
- Automatic Pan/Tilt position correction
- Power consumption: max. 600 W at 230 V / 50 Hz
- Power in connector: Neutric powerCON TRUE1
- DMX and RDM data in/out : Locking 3-pin & 5-pin XLR
- Ethernet port in/out: RJ45
- Embedded Ethernet switch 10/100 Mbps: 1 x in/ 1 x out
- Weight: 13.3 kg (29.2 lbs)
- Rigging: Horizontal or vertical mounting positions; Universal operating position, Mounting points with 2 pairs of 1/4-turn locking points; 2x Omega adaptors with 1/4-turn quick locks, Safety cable attachment point, Tilt transport lock
- Accessories: 2° Diffusion filter, EggCrate, Doughty Trigger Clamp, Safety wire 35 kg, Single Top Loader Case, Dual Top Loader Case, Quad Top Loader Case, Foam Shell
- Legal: Spiider® is a Registered Trademark of Robe lighting s.r.o. Spiider® is patented by Robe lighting s.r.o. and is protected by one or more pending or issued patents





Building on the success of the LEDWash 1200 and Spiider's advanced technology, the all new Tarrantula is the most powerful LED beam/wash/effects fixture on the market.

Now equipped with Robe's innovative lens coating technology which brings benefits such as bright and clear lenses, no scratches or marks, higher light output and longer intervals between cleaning.

Designed for concerts, car shows, sporting tournaments, indeed any event in a large venue, the Tarrantula is powered by 36x 40W and 1x 60W high powered emitters providing a stunning 20.000 lumen output.

The versatile optical system offers an adjustable beam angle, from a tight 4° spot to a super-wide 50° wash, of the highest quality light. The LEDWash 800 inspired Beam Shaper accessory creates a traditional oval beam that can be indexed to precisely cover the desired stage or performance area.

Central to the effects capabilities of this fixture is the exclusive Robe "Flower Effect" adding yet another spectacular visual dimension. Driven by the 60W RGBW multichip, this creates the sharpest spikes of light, rotating in either direction with controlled speed.

Fully saturated and intense colours as well as subtle pastel tones are created with velvety smooth transitions thanks to the integrated internal 18 bit LED dimming system. Dynamic video effects are easily achieved by mapping individual pixels controlled by a DMX desk or media servers via sACN with internal HTP merging, DMX or by Kling-Net protocol.

Technical Specification

- Light source type: 1x 60W RGBW and 36x 40W RGBW LED Multichips (CW and TW also available)
- LED life expectancy: min. 50.000 hours
- Typical lumen maintenance: 70% @ 20.000 hours
- Robe's proprietary optical design
- High - efficiency zoom optical system, ratio 12,5:1
- Innovative lens coating technology (Patent pending)
- Zoom range: 4° - 50°
- Fixture total lumen output: 20.150 lm
- Light output: 80.200 lx @ 5m
- Colour mixing mode RGBW or CMY
- Individual control of each RGBW pixel
- Variable CTO: 2.700K - 8.000K
- Virtual Colour Wheel: with 66 preset swatches
- Tungsten lamp effect at whites: 2.700K and 3.200K (red shift and thermal delay)
- Colour rainbow effect with variable speed
- Pre-programmed pixel effects with colour, dimming and strobe chases, waves and pulses at variable speed and direction
- Innovative Flower Effect: rotating in both directions at variable speed (Patent pending)
- Strobe effect: variable speed (max. 20 flashes per second)
- Setting & Addressing: ROBE Navigation System 2 (RNS2)
- Display: QVGA Robe touch screen with battery backup, gravitation sensor for auto screen positioning, operation memory service log with RTC, stand-alone operation with 3 editable programs (each up to 100 steps), built-in analyser for easy fault finding
- Protocols: USITT DMX-512, RDM, Art-Net, MA Net, MA Net2, sACN, Kling-Net
- Wireless CRMX™ technology from Lumen Radio: on request
- DMX Protocol modes: 6
- Control channels: 28, 48, 146, 183, 159, 196
- R, G, B, W colour mixing: 8 or 16 bit (internal 18 bit)
- Dimmer: 8 or 16 bit (internal 18 bit)
- Pan movement: 540°
- Tilt movement: 220°
- EMS™: Electronic Motion Stabilizer system for Pan & Tilt reducing beam deviation caused by truss movement or vibration (Patent pending)
- Power consumption: max. 1000 W at 230 V / 50 Hz
- Power in connector: Neutric powerCON TRUE1
- DMX and RDM data in/out: Locking 3-pin & 5-pin XLR
- Ethernet port in/out: RJ45
- Embedded ethernet switch 10/100 Mbps: 1x in/ 1x out
- Weight: 21.2 kg (46.7 lbs)
- Rigging
 - Mounting positions: Horizontally or vertically
 - Universal operating position
 - Mounting points: 2 pairs of 1/4-turn locking points
 - 2x Omega adaptors with 1/4-turn quick locks
 - Safety cable attachment point
 - Tilt transport lock
- Accessories:
 - Diffusion filter 2°, Beam shaper kit, EggCrate, Doughty Trigger Clamp, Safety wire 35 kg, Single Top Loader Case, Dual Top Loader Case, Foam Shell
- Legal:
 - Tarrantula™ is a Trademark of ROBE lighting s. r. o.
 - Tarrantula™ is patented by ROBE lighting s. r. o. and is protected by one or more pending or issued patents.



LEDBeam 150™



The best things come in small packages, now with zoom included. LEDBeam 150 is the answer with fast sweeping beams and a wide far-reaching quality wash in compact housing. The spectacular zoom range of 3.8° to 60° uses an eminent custom-designed optical system.

Now equipped with Robe's innovative lens coating technology which brings benefits such as bright and clear lenses, no scratches or marks, higher light output and longer intervals between cleaning.

The unique LEDBeam 150 FW offers Fresnel-Wash type of light output for even smooth edges and better color homogenization.

Attractive colorful chases and smooth transitions are powered by a cluster of high power multichip 40W RGBW LEDs.

A highly optimized motorised control produces speedy pan and tilt movement. Besides intense strobing capabilities, both LEDBeam 150 and LEDBeam 150 FW also offer gentle 18-bit dimming, including Tungsten lamp effects.



Technical Specification

- Light source type: 7x 40W RGBW multichips
- LED life expectancy: min. 20.000 hours
- Typical lumen maintenance: 70% @ 20.000 hours
- Robe's proprietary optical design
- Innovative lens coating technology (Patent pending)
- High - efficiency zoom optical system, ratio 15,5:1
- Zoom range: 3.8° - 60°
- Diffusion filter imbedded (for LEDBeam 150™ FW)
- Fixture total lumen output:
 - LEDBeam 150™: 2.842 lm
 - LEDBeam 150™ FW: 2.288 lm
- Light output:
 - LEDBeam 150™: 12.200 lx @ 5m
 - LEDBeam 150™ FW: 8.190 lx @ 5m
- Colour mixing mode RGBW or CMY
- Variable CTO: 2.700K - 8.000K
- Virtual Colour Wheel: with 66 preset swatches
- Tungsten lamp effect at whites: 2.700K and 3.200K (red shift and thermal delay)
- Motorized zoom
- Pre-programmed random strobe & pulse effects
- High resolution electronic dimming: 0 - 100%
- Setting & Addressing: two-row LCD display & 4 control buttons, stand-alone operation with 3 editable programs (each up to 40 steps)
- Protocols: USITT DMX-512, RDM
- Wireless CRMX™ technology from Lumen Radio (on request)
- DMX Protocol modes: 2
- Control channels: 22, 16
- Pan/Tilt resolution: 8 or 16 bit
- RGBW / CMY: 8 or 16 bit
- Zoom: 8 or 16 bit
- Dimmer: 8 or 16 bit (internal 18 bit)
- Pan movement: 450°; Tilt movement: 228°
- Power consumption: max. 220 W at 230 V / 50 Hz
- Power in/out connector: Neutrik powerCON in/out
- DMX and RDM data in/out: Locking 5-pin XLR
- Weight: 5.7 kg (12.6 lbs)
- Rigging
 - Mounting points: 1 pair of 1/4-turn locks
 - 1x Omega adaptor with 1/4-turn quick locks
 - Universal operating position, Safety cable attachment point
- Accessories: 2° Diffusion filter (for LEDBeam 150™), Wireless DMX external module, EggCrate, Safety wire 35 kg, Single Top Loader Case, Quad Top Loader Case, Eight Pack Top Loader Case, Foam Shell
- Legal: LEDBeam 150™ is a Trademark of Robe lighting s. r. o. LEDBeam 150™ and LEDBeam 150™ FW are patented by Robe lighting s. r. o. and are protected by one or more pending or issued patents.



LEDBeam 150™ FW





Introducing the revolutionary RoboSpot follow spot system, a device that allows follow spot operators to remotely control up to 12 fixtures simultaneously without the safety concerns and impracticality of placing personnel at the top venues such as stadiums, indoor arenas, concert halls, theatres, TV and film sets.

Stunning visual displays are now possible with as many as 12 perfectly synchronised fixtures following a performer across the stage. With the RoboSpot follow spot system it is no longer necessary to send operators into the rafters of venues to operate heavy and cumbersome traditional follow spot fixtures that take up valuable space in the world's live entertainment venues. Operators can now safely control multiple fixtures such as the BMFL range of products (exc. BMFL Wash), T1 Profile, T1 Profile FS, DL7S, DL4S, iPointe, MegaPointe and Pointe from any location within the venue, reducing set-up times and operating costs.

The Robe RoboSpot system features a BaseStation with a large 15.6-inch HD touch screen for the operator to observe the performance from a "first person" viewpoint and a full range of hand controls for operating the fixtures such as pan, tilt, intensity, focus, faders and many others, all of which are fully customisable for the operator's benefit. The screen receives the live video feed from the RoboSpot MotionCamera or from the fixture-mounted RoboSpot camera and the operator's commands are instantly transferred to the luminaires via DMX control with no lag for perfect motion tracking across the stage.

Extra controls are available through the touch screen display as well as four programmable jog-wheels with an additional 10 fully configurable buttons for a truly customised user experience. The remote lighting desk still retains control of the internal features of the fixtures such as light intensity and colour. All these features combine to make RoboSpot an innovative follow spot system.

Technical Specification

- 15.6" monitor
- QVGA Robe touch screen with battery backup
- 4 control jog wheels
- 10 preset buttons with a direct access of the pre-programmed features
- Activation & Blackout buttons
- Pan & Tilt freeze buttons
- Manual movement control with position indication on the screen
- 2 faders mounted on the handles with direct control of the key features 0 – 100% (for example dimmer and iris), assignable to any features of controlled moving head (focus, zoom, frost etc.)
- User setting of controllable attributes
- Saving and uploading of custom settings
- Compatible with the following moving head luminaires: BMFL FollowSpot / FollowSpot LT incl. RoboSpot Camera BMFL Spot, BMFL Blade, BMFL WashBeam, T1 Profile, T1 Profile FS, DL7S, DL4S, iPointe, MegaPointe and Pointe, when the RoboSpot MotionCamera is connected to the RoboSpot BaseStation
- One RoboSpot can control up to 12 fixtures
- Display: QVGA Robe touch screen with battery backup
- Movement control: manual
- Power consumption: 15 W at 230 V / 50 Hz
- Power in connector: Neutrik powerCON TRUE1
- DMX and RDM data in/out: Locking 3-pin & 5-pin XLR
- Ethernet port in/out: RJ45
- Video input: RJ45
- Mechanical specification: Height: 606 mm (23.8"), Width: 693 mm (27.3")
Depth: 472 mm (18.6"), Weight: 16.5 kg (36.4 lbs)
- Rigging
Mounting positions: on tripod (supplied with the product)
- Accessories
Monitor Shield and Note Holder for RoboSpot BaseStation, RoboSpot MotionCamera, Single Top Loader Case
- Legal:
RoboSpot™ is a Trademark of ROBE lighting s.r.o.
RoboSpot™ BaseStation is patented by ROBE lighting s.r.o.
and is protected by one or more pending or issued patents.





BMFL FollowSpot LT – A compact, affordable solution for the larger arena.

Further adding to the ground breaking RoboSpot system, the FollowSpot LT is designed for the larger venue that requires a longer throw distance, tighter beam and greater output power. The LT is the same size and weight as the standard BMFL FollowSpot, which is substantially smaller than other products of similar power. The proprietary optical design provides a zoom range from 2° to 8° and an output exceeding 455.000 lux at 5 metres.

Like the standard BMFL FollowSpot, the LT can be operated as a manual, stand-alone follow spot using the Robe LightMaster-Side and LightMaster-Rear control kits. Similarly, the LT can be operated remotely using the Robe RoboSpot MDC remote follow spot system and is pre-wired for the Digital Camera.

Packed with all the features you would expect from a BMFL series product, including, imperceptible colour mixing, fixed colour filters, 6000K native colour temperature, CRI > 92, Variable CTO to 2700K & CTB 9000K, fixed & variable frost filters, focus, zoom and a fast iris.



Technical Specification

- Light source type: Compact short-arc metal halide lamp
- Base: PGJX28
- Approved model: OSRAM Lok-it! HTI 1700/PS
- Lifetime: 750 hours @ 1700 W / 1500 W / Quiet mode
- CRI: 92+
- Colour temperature: 6.000K
- Robe's proprietary optical design
- High - efficiency zoom optical system, ratio 4:1
- Zoom range: 3,5° - 8° optical; 2° - 8° optical + iris
- Output lens diameter: 180 mm
- Dichroic glass reflector for maximising the light efficiency
- High efficient component optics
- Fixture total lumen output:
 - 34.600 lm @ 1700 W
 - 32.180 lm @ 1500 W
 - 28.370 lm @ 1200 Quiet mode
- Light output: 455.000 lx @ 5 m
- Variable CTO: 2.700 - 6.000 K
- Colour Wheel 1: 6 fixed dichroic colours: deep red, deep blue, orange, green, magenta, congo blue + white
- Colour Wheel 2: 6 replaceable „SLOT&LOCK“ dichroic colours: pink, lavender, laser green, 9000 K CTB, minus half and minus green + white
- Iris: Motorized, stepless, pulse effects up to 3 Hz
- Frost: Variable Light, Medium plus replaceable Heavy (two another frosts included)
- Motorized zoom and focus
- Shutter: Separate dual blade system, variable strobe effect up to 10 Hz, full black out
- Dimmer: Optimized dual blade system for exceptional smooth dimming
- Setting & Addressing: ROBE Navigation System 2 (RNS2)
- Display: QVGA Robe touch screen with battery backup, gravitation sensor for auto screen positioning, operation memory service log with RTC, stand-alone operation with 3 editable programs (each up to 100 steps), built-in analyser for easy fault finding
- Protocols: USITT DMX-512, RDM, ArtNet, MA Net, MA Net2, sACN
- Web server
- Wireless CRMX™ technology from Lumen Radio: On request
- DMX Protocol modes: 2
- Control channels: 32, 26
- Pan movement: 540°
- Tilt movement: 270°
- EMS™: Electronic Motion Stabilizer system for Pan & Tilt reducing beam deviation caused by truss movement or vibration (Patent pending)
- Automatic Pan/Tilt position correction
- Power supply: Electronic auto-ranging
- Input voltage range: 200-240 V, 50/60 Hz
- Power consumption: 2000 W at 230 V / 50 Hz
- Power in connector: Neutrik powerCON
- DMX and RDM data in/out: Locking 3-pin & 5-pin XLR
- Ethernet port in: RJ45
- Weight: 35 kg (77.2 lbs)
- Rigging
 - Mounting positions: 0°, 32°, 90°
 - Universal operating position
 - Mounting points: 5 pairs of 1/4-turn locking points
 - 2x Omega adaptors with 1/4-turn quick locks
 - Safety cable attachment point
 - Pan and Tilt transport locks
- Accessories:
 - Lamp Osram Lok-it HTI 1700/PS, BMFL Handles - 2 pcs in box, BMFL Side Handle, RoboSpot Camera, Doughty Trigger Clamp, Safety wire 50 kg, Single Top Loader Case, Dual Top Loader Case
- Legal: BMFL™ FollowSpot LT is a Trademark of Robe lighting s. r. o. BMFL™ FollowSpot LT is patented by Robe lighting s. r. o. and is protected by one or more pending or issued patents.



ParFect 150™ RGBW / ParFect 150™ FW RGBW



An LED source ACL beam at an affordable price made in Europe, now with zoom included.

ParFect 150 RGBW is a static, zoomable version of the successful ParFect 100 and retains all the key features including both CMY & RGBW colour control, 18-bit dimming, Tungsten emulation, selectable & variable colour temperatures and the powerful punchy beam ranging from 3,8° to 60°.

The compact and lightweight moulded composite unit includes a combined hanging bracket/floor stand. Accessories such as barn doors and the gel frame give ParFect 150 RGBW the features required for TV and theatre.

ParFect 150 FW RGBW provides fresnel wash type of light output, where the edge of the beam is smoothly diffused without any colour fringes. "ParFect" solution for theatres, television and concert halls.

Both products are now equipped with Robe's innovative lens coating technology which brings benefits such as bright and clear lenses, no scratches or marks, higher light output and longer intervals between cleaning.



Technical Specification

- Light source type: 7 x 40W RGBW multichips
- LED life expectancy: min. 20.000 hours
- Typical lumen maintenance: 70% @ 20.000 hours
- Robe's proprietary optical design
- Innovative lens coating technology (Patent pending)
- High - efficiency zoom optical system, ratio 15,5:1
- Zoom range: 3,8° - 60°
- Diffusion filter imbedded (for ParFect 150™ FW RGBW)
- Fixture total lumen output: ParFect 150™: 2.842 lm
ParFect 150™ FW: 2.288 lm
- Light output: ParFect 150™: 12.200 lx @ 5m
ParFect 150™ FW: 8.190 lx @ 5m
- Light output: 11.600 lx @ 5m
- Colour mixing mode RGBW or CMY
- Variable CTO: 2.700K - 8.000K
- Virtual Colour Wheel: with 66 preset swatches
- Tungsten lamp effect at whites: 2.700K and 3.200K (red shift and thermal delay)
- Pre-programmed random strobe & pulse effects
- High resolution electronic dimming: 0 - 100%
- Setting & Addressing: two-row LCD display & 4 control buttons, stand-alone operation with 3 editable programs (each up to 25 steps)
- Protocols: USITT DMX-512, RDM
- Wireless CRMX™ technology from Lumen Radio: on request
- DMX Protocol modes: 2, Control channels: 17, 11
- RGBW / CMY: 8 or 16 bit
- Dimmer: 8 or 16 bit (internal 18 bit)
- Power consumption: max. 220 W at 230 V / 50 Hz
- Power in/out connector: Neutrik powerCON in/out
- DMX and RDM data in/out : Locking 5-pin XLR
- Weight: 5 kg (11 lbs)
- Rigging: Mounting horizontally or vertically via mounting yoke, Universal operating position, Safety cable attachment point
- Accessories:
 - Diffusion filter (for ParFect 150™ RGBW):
 - for fixed installation under optics 2°
 - for sliding into Gel Frame 2°
- Wireless DMX external module, Gel frame, Barndoor module, EggCrate, HALO frame adaptor, Doughty Trigger Clamp, Safety Wire, Single Top Loader Case, Six Pack Top Loader Case, Eight Pack Top Loader Case, Dual Foam Shell
- Legal: ParFect 150™ is the Trademark of ROBE lighting s.r.o. ParFect 150™ RGBW and ParFect 150™ FW RGBW are patented by ROBE lighting s.r.o. and are protected by one or more pending or issued patents.

ParFect 150™ RGBA / ParFect 150™ FW RGBA



The ParFect 150 RGBA has a bright, ACL style light beam with zoom control and a high CRI in an economical LED format while the ParFect 150 FW RGBA has a bright, Fresnel style soft-beam edge, also with zoom control and a high CRI in an economical LED format.

Using an RGBA LED format, it provides both a very bright output and produces warm golden tones while retaining the key features of precise colour control via CMY or RGBA colour mixing, ultra-smooth 18-bit dimming and a powerful 3,8° to 60° zoom.

These compact, lightweight fixtures include a combined hanging/floor stand bracket, accessories such as barn doors and the gel frame, making them versatile fixtures for theatrical and educational applications.

Both products are now equipped with Robe's innovative lens coating technology which brings benefits such as bright and clear lenses, no scratches or marks, higher light output and longer intervals between cleaning.



Technical Specification

- Light source type: 7 x 40W RGBA multichips
- LED life expectancy: min. 20.000 hours
- Typical lumen maintenance: 70% @ 20.000 hours
- Robe's proprietary optical design
- Innovative lens coating technology (Patent pending)
- High - efficiency zoom optical system, ratio 15,5:1
- Zoom range: 3,8° - 60°
- Diffusion filter imbedded (for ParFect 150™ FW RGBA)
- Light output:
 - ParFect 150™ RGBA: 9.810 lx @ 5m
 - ParFect 150™ FW RGBA: 7.610 lx @ 5m
- Fixture total lumen output: ParFect 150™ RGBA: 2.245 lm
ParFect 150™ FW RGBA: 1.796 lm
- Colour mixing mode RGBA or CMY
- Variable CTO: 2.700K - 8.000K
- Virtual Colour Wheel: with 66 preset swatches
- Tungsten lamp effect at whites: 2.700K and 3.200K (red shift and thermal delay)
- Motorized zoom
- Pre-programmed random strobe & pulse effects
- High resolution electronic dimming: 0 - 100%
- Setting & Addressing: two-row LCD display & 4 control buttons, stand-alone operation with 3 editable programs (each up to 25 steps)
- Protocols: USITT DMX-512, RDM
- Wireless CRMX™ technology from Lumen Radio: on request
- DMX Protocol modes: 2, Control channels: 17, 11
- RGBA / CMY: 8 or 16 bit
- Zoom: 8 or 16 bit
- Dimmer: 8 or 16 bit (internal 18 bit)
- Power consumption: max. 220 W at 230 V / 50 Hz
- Power in/out connector: Neutrik powerCON in/out
- DMX and RDM data in/out: Locking 5-pin XLR
- Weight: 5 kg (11 lbs)
- Rigging: Mounting horizontally or vertically via mounting yoke, Universal operating position, Safety cable attachment point
- Accessories:
 - Diffusion filter (for ParFect 150™ RGBA):
 - for fixed installation under optics 2°
 - for sliding into Gel Frame 2°
- Wireless DMX external module, Gel frame, Barndoor module, EggCrate, HALO frame adaptor, Doughty Trigger Clamp, Safety Wire, Single Top Loader Case, Six Pack Top Loader Case, Eight Pack Top Loader Case, Dual Foam Shell
- Legal: ParFect 150™ is a Trademark of Robe lighting s. r. o. ParFect 150™ RGBA and ParFect 150™ FW RGBA are patented by Robe lighting s. r. o. and are protected by one or more pending or issued patents.

iParFect 150™ FW RGBW



The all-new iParFect 150 FW RGBW is loaded with killer features. It has an exceptionally-wide zoom range, is completely silent due to passive cooling and, with an IP 65 rating, is ideal for television, theatres, concert halls and any kind of outdoor event.

Other characteristics include CMY & RGBW colour control, 18-bit dimming and Tungsten emulation with both selectable & variable colour temperatures providing total output control.

The powerful, punchy beam with a zoom range of 3,8° to 60°, combined with a Fresnel style beam edge, results in a smooth, homogenised beam of light.

This compact, lightweight fixture includes a combined hanging / floor stand bracket and accessories such as gel frame and barn doors.

Now equipped with Robe's innovative lens coating technology which brings benefits such as bright and clear lenses, no scratches or marks, higher light output and longer intervals between cleaning.

Technical Specification

- Light source type: 7x 40W RGBW multichips
- LED life expectancy: min. 20.000 hours
- Typical lumen maintenance: 70% @ 20.000 hours
- Robe's proprietary optical design
- Innovative lens coating technology (Patent pending)
- High - efficiency zoom optical system, ratio 15,5:1
- Zoom range: 3.8° - 60°
- Fixture total lumen output: 1.676 lm
- Light output: 6.800 lx @ 5m
- Colour mixing mode RGBW or CMY
- Variable CTO: 2.700K - 8.000K
- Virtual Colour Wheel: with 66 preset swatches
- Tungsten lamp effect at whites: 2.700K and 3.200K (red shift and thermal delay)
- Motorized zoom
- Pre-programmed random strobe & pulse effects
- High resolution electronic dimming: 0 - 100%
- Setting & Addressing: two-row LCD display & 4 control buttons, stand-alone operation with 3 editable programs (each up to 25 steps)
- Protocols: USITT DMX-512, RDM
- Wireless CRMX™ technology from Lumen Radio: on request
- DMX Protocol modes: 2
- Control channels: 17, 11
- RGBW / CMY: 8 or 16 bit
- Zoom: 8 or 16 bit
- Dimmer: 8 or 16 bit (internal 18 bit)
- Power consumption: max. 220 W at 230 V / 50 Hz
- Power in/out connector: IP 65 Neutrik powerCON TRUE1 in/out
- DMX and RDM data in/out: Locking 5-pin XLR
- Weight: 7.5 kg (16.5 lbs)
- IP: 65
- Rigging: Mounting horizontally or vertically via mounting yoke, Universal operating position, Safety cable attachment point
- Accessories: Gel frame, Barndoor module, Doughty Trigger Clamp, Safety wire 35 kg, Single Top Loader Case, Six Pack Top Loader Case, Eight Pack Top Loader Case
- Legal: iParFect 150™ FW is a Trademark of Robe lighting s. r. o. iParFect 150™ FW RGBW is patented by Robe lighting s. r. o. and is protected by one or more pending or issued patents.

Technical Specification

- Light source type: 7x 40W RGBA multichips
- LED life expectancy: min. 20.000 hours
- Typical lumen maintenance: 70% @ 20.000 hours
- Robe's proprietary optical design
- Innovative lens coating technology (Patent pending)
- High - efficiency zoom optical system, ratio 15,5:1
- Zoom range: 3.8° - 60°
- Fixture total lumen output: 1.310 lm
- Light output: 5.300 lx @ 5m
- Colour mixing mode RGBA or CMY
- Variable CTO: 2.700K - 8.000K
- Virtual Colour Wheel: with 66 preset swatches
- Tungsten lamp effect at whites: 2.700K and 3.200K (red shift and thermal delay)
- Motorized zoom
- Pre-programmed random strobe & pulse effects
- High resolution electronic dimming: 0 - 100%
- Setting & Addressing: two-row LCD display & 4 control buttons, stand-alone operation with 3 editable programs (each up to 25 steps)
- Protocols: USITT DMX-512, RDM
- Wireless CRMX™ technology from Lumen Radio: on request
- DMX Protocol modes: 2
- Control channels: 17, 11
- RGBA / CMY: 8 or 16 bit
- Zoom: 8 or 16 bit
- Dimmer: 8 or 16 bit (internal 18 bit)
- Power consumption: max. 220 W at 230 V / 50 Hz
- Power in/out connector: IP 65 Neutrik powerCON TRUE1 in/out
- DMX and RDM data in/out: Locking 5-pin XLR
- Weight: 7.5 kg (16.5 lbs)
- IP: 65
- Rigging: Mounting horizontally or vertically via mounting yoke, Universal operating position, Safety cable attachment point
- Accessories: Gel frame, Barndoor module, Doughty Trigger Clamp, Safety wire 35 kg, Single Top Loader Case, Six Pack Top Loader Case, Eight Pack Top Loader Case
- Legal: iParFect 150™ FW RGBA is a Trademark of Robe lighting s. r. o. iParFect 150™ FW RGBA is patented by Robe lighting s. r. o. and is protected by one or more pending or issued patents.

The all-new iParFect 150 FW RGBA features an exceptionally-wide zoom range and silent operation with passive cooling, making it ideal for theatres, concert halls and television.

With an IP 65 rating, it is also perfect for any outdoor application. The RGBA LED colour combination provides a high CRI and allows designers to produce warm, rich, amber tones that are normally difficult to achieve. Other features include smooth CMY & RGBA colour control, 18-bit dimming and Tungsten emulation, with both selectable & variable colour temperatures providing total output control.

The powerful, punchy beam with a zoom range of 3,8° to 60°, combined with a Fresnel style beam edge, results in a smooth, homogenised beam of light.

This compact, lightweight fixture includes a combined hanging / floor stand bracket and accessories such as gel frame and barn doors.

Now equipped with Robe's innovative lens coating technology which brings benefits such as bright and clear lenses, no scratches or marks, higher light output and longer intervals between cleaning.



Divine™ 72 RGBW



Powerful and compact, the Divine 72 cuts through the night sky. With its precise narrow 6° beam, new architectural compositions can be achieved by layering facades, details and landscape features.

The power to paint any structure in distinct contrast or subtle variations is possible with Robe's signature color mixing capability.

Made for the brutality of outdoor living the Divine 72 boasts an IK10 rating and is also 'Suitable for Wet Locations' with an IP67 rating.

While precisely designed optics deliver more than 6.500 lx at 10 m/30 feet and output „ACTIVE LUMENS“ of 10.135 lm. Specifically developed for long throw distance, using an exclusive internal antiglare feature and „ZERO“ passive light optics, the Divine 72 tops other high output floodlights.



Technical Specification

- Light source type: 72 x High Power Single Chip LEDs
- LED colour variants: RGBCW (CW- 6.500K), PW (6.500K)
- CRI: 70 (PW 6.500K)
- LED life expectancy: min. 60.000 hours
- Typical lumen maintenance: 70% @ 60.000 hours
- Robe's proprietary optical design
- Beam angle: 6°, 10°, 20°, 40°, 60°, 100°, 6° × 30°, 30° × 6°, 6° × 60°, 60° × 30°, 10° × 40°, 40° × 10°, 35° × 70°, 70° × 35°, 30° × 90°, 90° × 30°
- Peak intensity: 6.573 lx @ 10 m
- Light output: 10.135 lm @ 6° optics
- 2 individually controllable LED zones
- Pre-programmed random strobe & pulse effects
- High resolution electronic dimming: 0 - 100%
- Setting & Addressing: 1-row LCD display
- Protocols: USITT DMX-512, RDM
- Wireless CRMX™ technology from Lumen Radio: On request
- DMX Protocol modes: 2
- Control channels: 10, 14
- Movement control: manual
- Dimmer: 18 bit
- Power consumption: Max. 325 W at 230 V / 50 Hz
- Power in connector: Integrated junction box/ terminal block
- DMX and RDM data in/out: Integrated junction box/ terminal block
- Weight: 16.8 kg (37 lbs)
- Ingress protection rating: IP67 / Suitable for wet locations
- IK Rating: IK10
- Rigging
Mounting positions: Horizontally or vertically, Universal operating position
- Accessories
Top hat, Half top hat, Barndoor module, C-clamp adaptor, Doughty Trigger Clamp, Safety wire 35 kg, Set of Rubber Feet
- Legal
Divine™ 72 RGBW is a Trademark of Robe lighting s. r. o.
Divine™ 72 RGBW is patented by Robe lighting s. r. o. and is protected by one or more pending or issued patents

Technical Specification

- Light source type: 7 x 40W RGBW multichips
- LED life expectancy: min. 20.000 hours
- Typical lumen maintenance: 70% @ 20.000 hours
- Robe's proprietary optical design
- Innovative lens coating technology (Patent pending)
- High - efficiency zoom optical system, ratio 15,5:1
- Zoom range: 3.8° - 60°
- Fixture total lumen output: 1.676 lm
- Light output: 6.800 lx @ 5 m
- Colour mixing mode RGBW or CMY
- Variable CTO: 2.700K - 8.000K
- Virtual Colour Wheel: with 66 preset swatches
- Tungsten lamp effect at whites: 2.700K and 3.200K (red shift and thermal delay)
- Motorized zoom
- Pre-programmed random strobe & pulse effects
- High resolution electronic dimming: 0 - 100%
- Setting & Addressing: two-row LCD display & 4 control buttons, stand-alone operation with 3 editable programs (each up to 25 steps)
- Protocols: USITT DMX-512, RDM
- Wireless CRMX™ technology from Lumen Radio: On request
- DMX Protocol modes: 2
- Control channels: 17, 11
- RGBW / CMY: 8 or 16 bit
- Zoom: 8 or 16 bit
- Dimmer: 8 or 16 bit (internal 18 bit)
- Maximum ambient temperature: 45°C (113°F)
- Power consumption: max. 220 W at 230 V / 50 Hz
- Weight: 7.5 kg (16.5 lbs)
- Ingress protection rating: IP65 / Suitable For Wet Locations
- Rigging
Mounting horizontally or vertically via mounting yoke, Universal operating position, Safety cable attachment point
- Accessories
Top hat, Half top hat, Barndoor module, Doughty Trigger Clamp
- Legal
ArcPar™ 150 Outdoor is a Trademark of Robe lighting s. r. o.
ArcPar™ 150 Outdoor is patented by Robe lighting s. r. o. and is protected by one or more pending or issued patents

Designed with an all-in-one approach the ArcPar 150 Outdoor makes installation smoother allowing last minute tweaks and modifications on site.

The versatility of this unique product shines through with the introduction of its optical system. A high level of design flexibility is possible with the ArcPar 150 Outdoor which has a zoom ratio of 15,5:1.

With an approximate range of 3,8°-60° it makes the ArcPar 150 Outdoor ideal for either flood or spot lighting. The ArcPar 150 Outdoor is 'Suitable for Wet Locations' with an IP 65 rating.

As always, Robe's signature quality color mixing is present, easily selectable through a virtual color wheel, with a preset of over 60 colour options.

Now supplied with Robe's innovative lens coating technology which brings benefits such as bright and clear lenses, no scratches or marks, higher light output and longer intervals between cleaning.

ArcPar™ 150 Outdoor



Eminere™ 1, 2, 3, 4



The highest quality LED architectural and architainment fixture Eminere is designed by Robe for a wide range of exterior and interior applications. The various available lens options cover all possible uses from Flood Lighting, Wall Grazing, Wall Washing and Accent Lighting. Robe's unique 18-bit colour mixing resolution ensures extra fine colour tuning as well as smooth dimming at low level intensity.

The new Eminere linear range was designed in our state-of-the-art R&D facility by industry experts with over 20 years experience in the field. Our fixtures are IP 67 rated and therefore they are extensively tested to withstand extreme conditions.

Available in 1, 2, 3, and 4 foot sizes (300 / 600 / 900 / 1200 mm) with RGBW or RGBA single chips as standard. Easy to control, 1 pixel per foot.

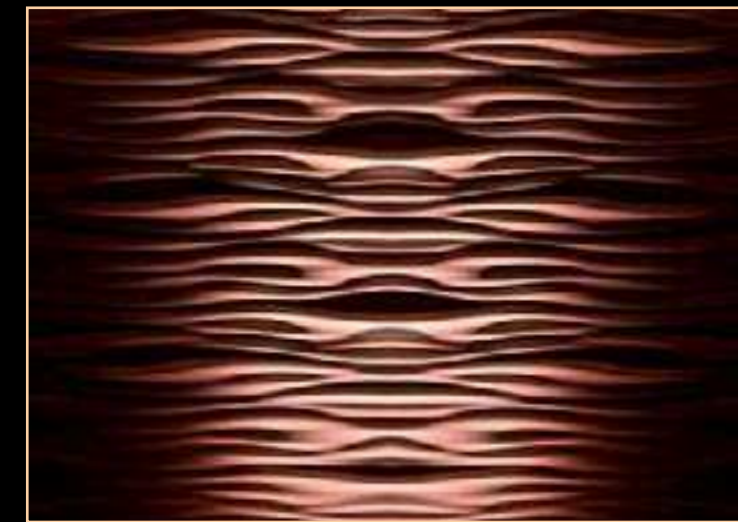
Fixtures can be used for both permanent and temporary installations, including various architectural and architainment applications such as outdoor and indoor illumination of commercial buildings, hotels, offices, residences, historic buildings, assorted venues and for events, festivals and concerts.



Technical Specification

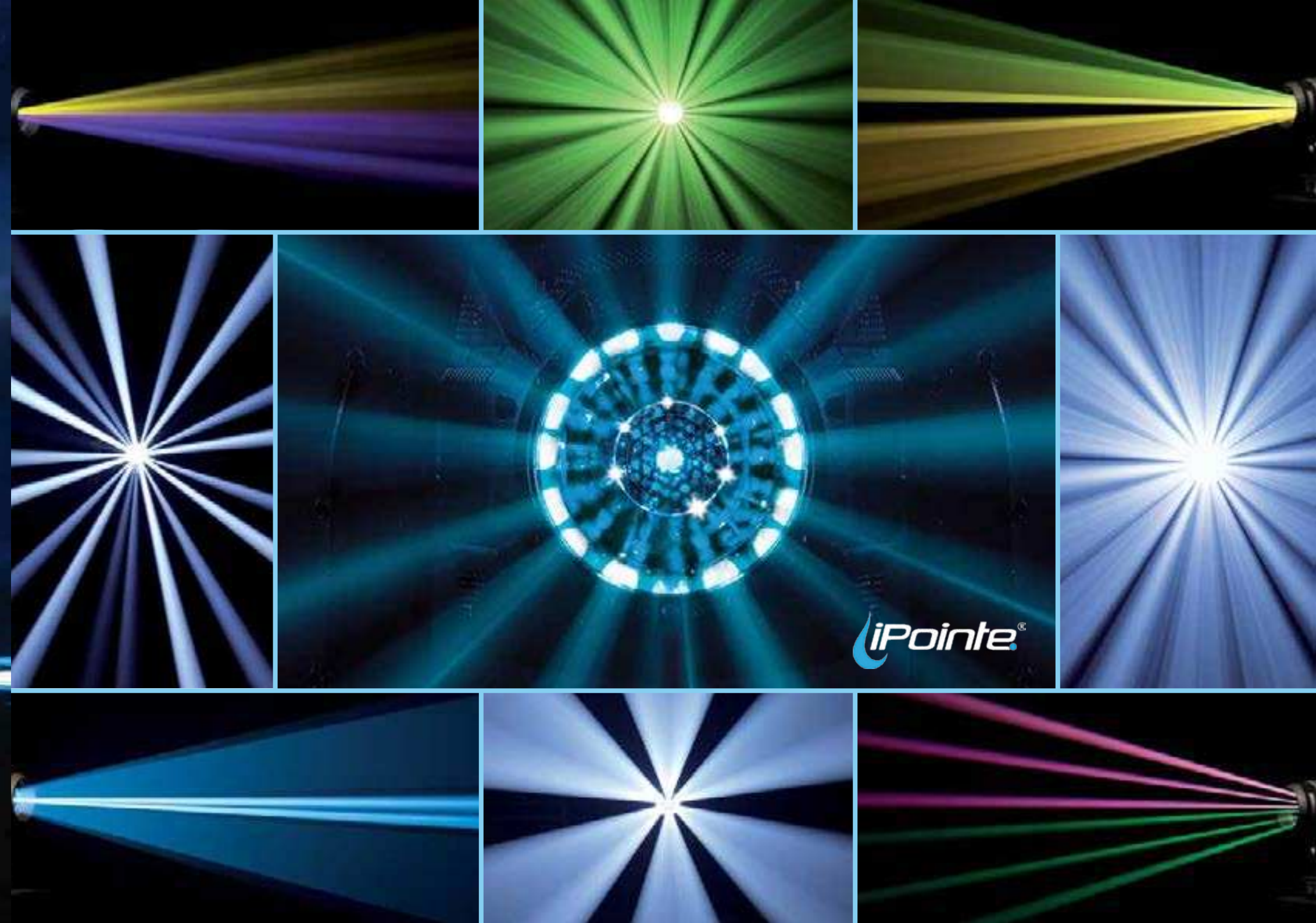
- Light source type: 12, 24, 36, 48 high power single chip LEDs
- LED life expectancy: min. 120.000 hours (L70°@25°C)
- Typical lumen maintenance: 70% @ 120.000 hours
- LED colour variants: RGBW, RGBA
- Beam angle: assymetric wallwasher, 9°, 15°, 30°, 40°, 60°, 100°, 10° × 30°, 10° × 60°, 35° × 70°, 15° × 90°
- Fixture total lumen output:
 - Eminere 1: 1.147 lm, RGBW @ 9°
 - Eminere 2: 2.294 lm, RGBW @ 9°
 - Eminere 3: 3.441 lm, RGBW @ 9°
 - Eminere 4: 4.588 lm, RGBW @ 9°
- Setting & Addressing: self addressing or custom setting via Eminere Data Box & graphical LCD display stand-alone operation with editable programs (up to 35 steps)
- Protocols: USITT DMX-512, RDM, ArtNet, MA Net, MA Net2, sACN
- Wireless CRMX™ technology from Lumen Radio: On request
- Pixel control: Individual RGBW / RGBA pixel control (1px= 300mm/1ft)
- DMX Protocol modes: 3 (pixel, fixture, string)
- Colour mixing: additive RGBW / RGBA
- Manual control of all effects via control panel
- Power consumption:
 - Eminere 1: 20W at 230 V / 50 Hz
 - Eminere 2: 40W at 230 V / 50 Hz
 - Eminere 3: 60W at 230 V / 50 Hz
 - Eminere 4: 80W at 230 V / 50 Hz
- Power in/out connector: Hybrid Power and Data connector
- Max. load of Eminere Data Box:
 - Eminere Data Box Daisy: 156 of Eminere 1
 - Eminere Data Box Star: 156 of Eminere 1
 - Eminere Data Box Star PRO: 936 of Eminere 1
- Width: 76 mm (2.99")
- Height: 91 mm (3.58")
- Length: 300 mm (11.81"), 600 mm (23.6"), 900 mm (35.43"), 1200 mm (47.24")
- Weight: 2.5 kg (5.5 lbs), 4.2kg (9.25 lbs), 5.9kg (13 lbs), 8.7 kg (19.2 lbs)
- Ingress protection rating: 67
- Rigging
 - Mounting bracket: L-shape
- Accessories
 - Adjustable mounting bracket 50-100mm, Adjustable mounting bracket 100-200mm, Adjustable mounting bracket 200-400mm, Cable cover for Eminere 1, Cable cover for Eminere 2, Cable cover for Eminere 3, Cable cover for Eminere 4, Shield for Eminere 1, Shield for Eminere 2, Shield for Eminere 3, Shield for Eminere 4
- Legal
 - Eminere™ 1, 2, 3, 4 are a Trademarks of Robe lighting s. r. o.
 - Eminere™ 1, 2, 3, 4 are patented by Robe lighting s. r. o. and is protected by one or more pending or issued patents

Eminere™ 1, 2, 3, 4



THE NEW OUTDOOR POINT!

 **iPointe**®



2019

2

3

4

5



www.robe.cz

ROBE®

Head office: ROBE lighting s. r. o. | Házovice 2090 | 756 61 Rožnov pod Radhoštěm | Czech Republic | Tel.: +420 571 751 500 | Fax: +420 571 751 515 | E-mail: robe@robe.cz | **Factory:** ROBE lighting s. r. o. | Palackého 416 | 757 01 Valašské Meziříčí | Czech Republic | Tel.: +420 571 751 500 | Fax: +420 571 751 515 | E-mail: robe@robe.cz | **UK:** ROBE UK Ltd. | Northampton | United Kingdom | Tel.: 01604 741000 | E-mail: info@robeuk.com | **France:** ROBE Lighting France SAS | ZI Paris Nord 2 | Bâtiment Euler | 33, rue des Vanesses | 93420 Villepinte | Tel.: +33 1 48 63 84 81 | Fax: +33 1 48 63 84 87 | E-mail: info@robelighting.fr | **America:** ROBE Lighting Inc. | 3410 Davie Road, Suite 401 | Davie | Florida 33314 | U.S.A. | Tel.: +1 954 680 1901 | Fax: +1 954 680 1910 | E-mail: info@robelighting.com | **Asia and Pacific:** Robe Lighting Asia Pacific Pte. Ltd. | 12 New Industrial Road | #02-05 Morningstar Centre | S-536202 | Singapore | Tel: +65 6280 8558 | E-mail: sales@robeap.com | **Germany:** ROBE DEUTSCHLAND GMBH Carl-Zeiss-Ring 2185737 | Ismaning | Germany | Tel: +49 89 9993 9090 | E-mail: info@robelighting.de | **Middle East:** Robe Middle East trading LLC | Office Nbr 507 5th floor | Al Asmawi Building DIP 1 | Dubai | UAE | Po Box: 391 898 | Tel.: +971 4 885 3223 | E-mail: info@robe-me.com | **Russia and CIS:** Taganskaya str. 26-1-72 | 109004 Moscow | Russia | Tel: +7 495 504 9569 | E-mail: info@roberussia.com | **Central and South America:** Galicia 1198 ap 303 | 1100 Montevideo | Uruguay | Tel.: +5982 900 67 47 | E-mail: info@robecsa.com

May 2019 © ROBE lighting s. r. o. All specifications subject to change without notice. Patents pending.

1
2
3
4
5