



BEYOND

THE FOOTLIGHTS

A ROBE World of Theatre,
Opera & Performing
Arts Venues

ROBE[®]



ROBE LIGHTING FO

Dear Theatre Professionals

This first edition of Beyond the Footlights highlights some of the most recent opera, theatre and performing arts venue projects and spaces from across Europe and around the world that are utilising Robe lighting fixtures.

As a brand, Robe remains dedicated to creating and refining product ranges like the T series that are specifically designed and developed to meet the high demands and precision of this exacting genre of lighting.

From impressive and classic historic grand opera houses to cool, intimate, lively, experimental fringe theatre spaces that push the boundaries of imagination, there is a Robe product for every performance space!

Robe's unique TE (TRANSFERABLE ENGINE) technology is featured in many of them, offering more sustainable and energy-efficient light sources with greater longevity and innate reliability. These are also highly flexible options, and we are constantly expanding the range of creative tools available for lighting and visual designers.

These projects are also a testament to the imagination and talent of industry lighting practitioners who continue to utilise our

products in new and different ways in these fields. Very often they will be transferring techniques – and sometimes technologies – from other genres into new situations and originating new ideas and practices.

As a brand, we will continue listening closely to user feedback about critical features like colour rendering, colour mixing, intensity, the quality of white light and the smoothness and accuracy of dimming, shuttering and movement – a learning process that will inform and shape our future products and thinking.

Beyond The Footlights is a small snapshot of the current list of reference sites which we hope is informative and will inspire others to look at Robe's quality and comprehensive lighting solutions.

Enjoy...

Josef Valchar, CEO, Robe lighting s.r.o.



A handwritten signature in black ink, reading "Josef Valchar". The signature is stylized and fluid.

OR PERFORMANCE



Contents

THEATRES

Théâtre National De Strasbourg	14
Deutsches Theater Berlin	16
Maxim Gorki Theatre Berlin	20
Staatstheater Kassel	22
Staatsschauspiel Dresden	24
Thalia Theatre	28
Theatr Muzyczny Roma	30
Teatr Dramatyczny	34
Gdańsk Teatr Szekspirowski	36
Theatre Royal de La Monnaie De Munt	38
Det Norske Teatret	44
Kunstmin Dordrecht	46
Market Theatre Johannesburg	50
Ljubljana Puppet Theatre	52
Théâtre du Châtelet	58
Den National Scene	60
Schouwburg Kortrijk	64
Kunsthøgskolen	68
Amare	70
Croatian National Theatre of Split	72
Det Ny Teater	74
Vanemuine	76
Cameri Theatre	82
Ramat Gan Theatre	84
Bellevue Teatret	86
Brno City Theatre	88
Czech National Theatre	92

OPERA HOUSES

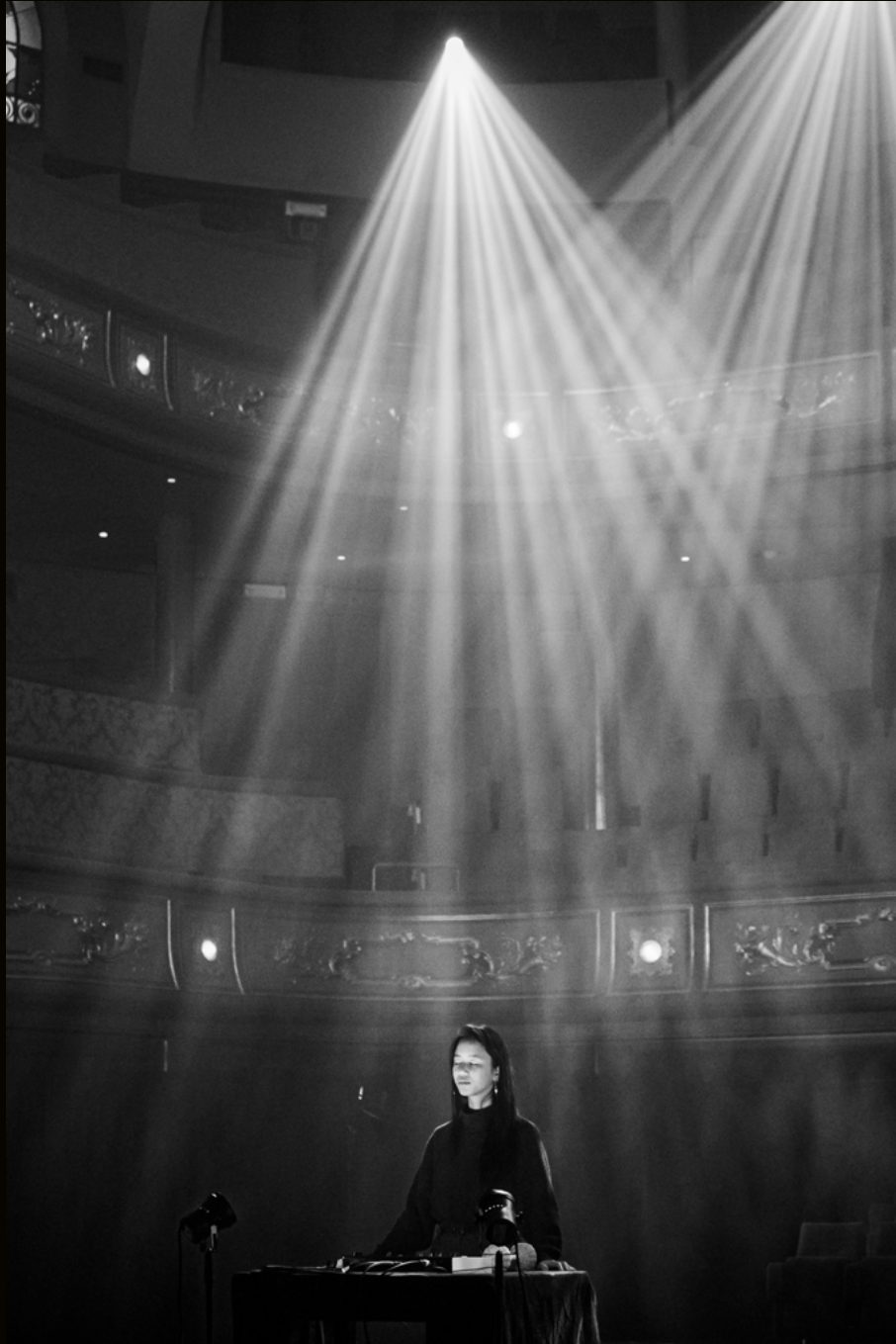
Paris Opera Palais Garnier and Opéra Bastille	98
L'Opéra Berlioz Corum de Montpellier	102
La Scala Milan	104
Israeli Opera	106
Hungarian State Opera House	110
Vienna State Opera	112

PERFORMANCE SPACES

Resorts World Las Vegas	116
Kaufmann Center For Performing Arts	120
Kampnagel Hamburg	122
Skive Kulturcenter	124
MECC MacKay	126
Cankarjev dom	128



BEYOND



THE FOOTLIGHTS



“I sometimes wonder what a lighting designer at the beginning of the last century might think if they saw us at work today. They would watch in amazement as we effortlessly took a beam of light and gave shape to it, changing its colour, altering its intensity, even making it sweep effortlessly through the air. They would see the light dance to music, respond to a spoken word, and by its very beauty, affect the emotion of strangers. And they would hold their breath as, with the touch of a button, we took that light away from them in welcome to the night.

Those incredulous souls from another age would surely see us as wizards and necromancers, as magicians even, and that wouldn't be so far from the truth! But in the sure knowledge of how our illusions are actually created, let us never, ever take for granted the extraordinary gift that we have been given by the inventors and the makers of lights and the machines that control them. It is to them that we owe our creative lives and it is to them that we give our heartfelt and eternal thanks!”

Patrick Woodroffe

June 2023



ACTS



“An effective lighting design is like a beautiful painting.
Your medium is bringing someone to an emotional state
that would not be achieved at that moment without your art.
This does not and cannot happen by accident!”



FULLIGHT





Act 1

THEATRES

Théâtre National De Strasbourg	12
Deutsches Theater Berlin	14
Maxim Gorki Theatre Berlin	18
Staatstheater Kassel	20
Staatsschauspiel Dresden	22
Thalia Theatre	26
Theatr Muzyczny Roma	28
Teatr Dramatyczny	32
Gdańsk Teatr Szekspirowski	34
Theatre Royal de La Monnaie De Munt	36
Det Norske Teatret	42
Kunstmin Dordrecht	44
Market Theatre Johannesburg	48
Ljubljana Puppet Theatre	50
Théâtre du Châtelet	56
Den National Scene	58
Schouwburg Kortrijk	62
Kunsthøgskolen	66
Amare	68
Croatian National Theatre of Split	70
Det Ny Teater	72
Vanemuine	74
Cameri Theatre	80
Ramat Gan Theatre	82
Bellevue Teatret	84
Brno City Theatre	86
Czech National Theatre	90





“Light is the tool with which I spark imagination. I am fascinated by light's capacity to stir emotions and impact our behaviour, to recall memories, and to influence how we feel toward everything we perceive.”

– Dr Yaron Abulafia, PHD, Lighting Designer, Author



Théâtre National De Strasbourg

The National Theatre of Strasbourg (TNS) has chosen Robe Lighting to equip its stage and be used for the lighting of productions/shows performed there.

The TNS has existed in this form since October 1968. A public institution directly attached to the Ministry of Culture created by decree on 31st May 1972, it started out as the Centre Dramatique de l'Est (CDE), whose last director, Hubert Gignoux, asked Minister of Cultural Affairs André Malraux to transform it into a national theatre.

The CDE was the first post-war decentralised dramatic decentralisation establishment, then the first C.D.N. (Centres dramatiques nationaux) to have its own venue; the TNS remains to this day the only national theatre in the regions.

Almost from the beginning of the CDE it has housed one of the two national schools for professional dramatic art training (the other being the Conservatoire National Supérieur d'Art Dramatique in Paris), making it both unique and hugely important in the French theatrical landscape.

In total nearly 50 x Robe fixtures have been acquired by the venue with T1s and T2s plus LEDBeam 350s, and one RoboSpot BaseStation with MotionCamera which is used for remote tracking.

Robe Lighting France handled the sale through the French company Loct'Ambule, based in Alsace and headed by director, Jacky Fregonese.

Products used:

14x	T1 Profile™
10x	T2 Profile™
24x	LedBeam 350™
1x	RoboSpot™ BaseStation + Motion Camera



Deutsches Theater Berlin

The Deutsches Theater in Berlin is one of Germany's foremost producing houses, highly acclaimed for its cutting-edge work.

Since 2020, the venue has added 20x Robe T1 Profiles which are available across its stages, a move specified and overseen by head of lighting Robert Grauel and his team including Linus Zahn who is the lighting systems tech and person in charge of new technologies.

The main stage was originally built in 1850 and the building now consists of two adjoining stages – the 600-capacity main stage and the 280-seat Kammerspiele

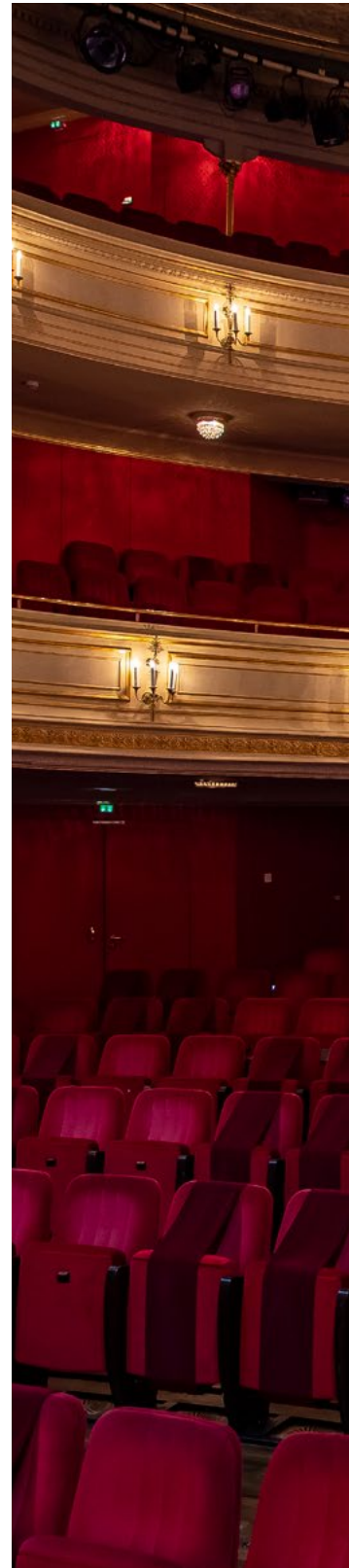
established by the legendary Max Reinhardt in 1906 for modern drama – sharing a common, classical façade.

The Box is a black box studio space located in the Kammerspiele foyer with seating for 80 people, and there are extensive rehearsal rooms, workshops, and storage facilities in a new building behind.

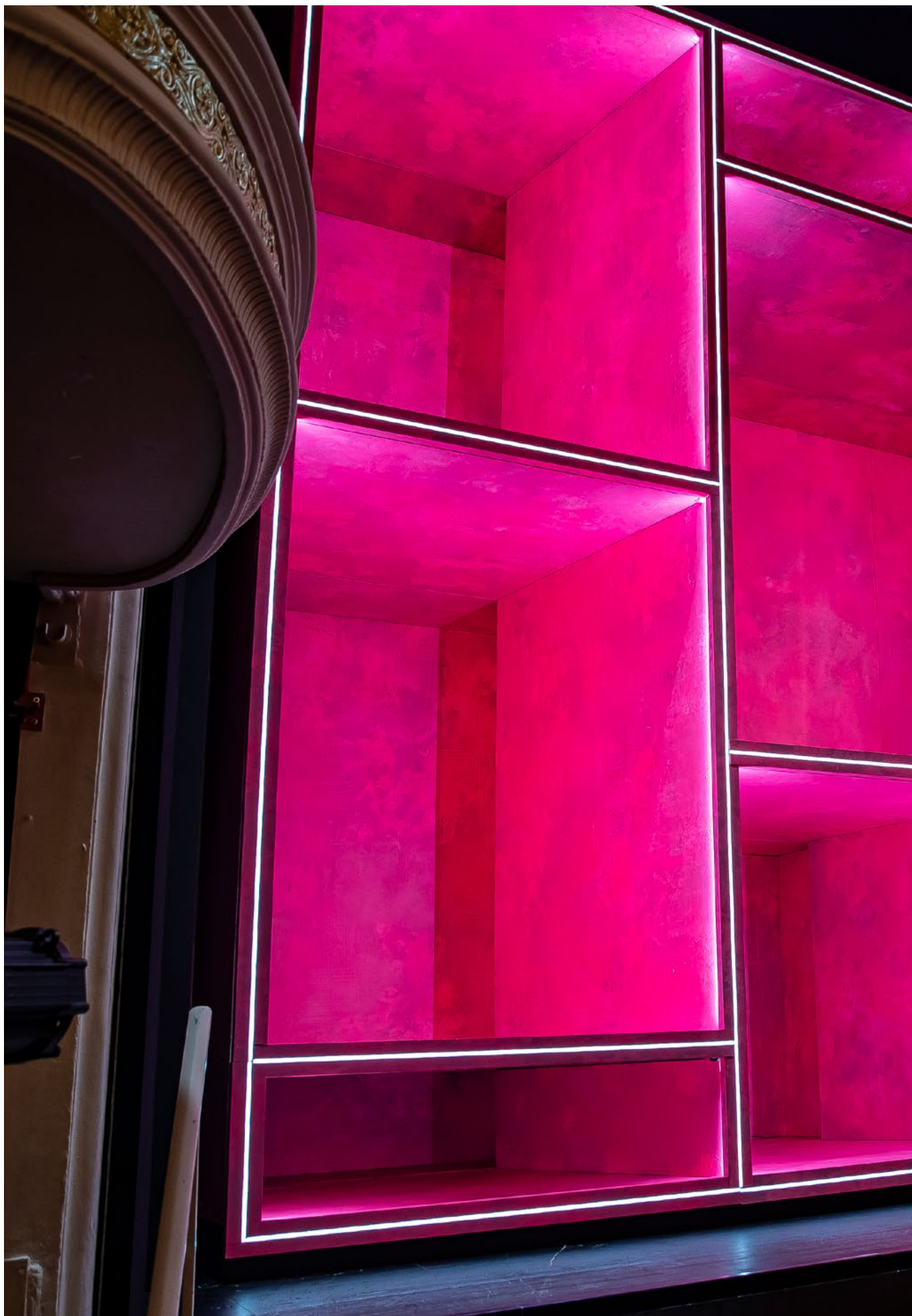
The Robe T1 Profiles were selected from a shortlist of three fixtures from different manufacturers explained Linus, who is part of a 35-strong lighting department working across all the stages and rehearsal areas.

Products used:

2x	Spikie®
6x	T1 Profile™
2x	Tarrantula™
2x	ESPRITE®
4x	ColorStrobe™
2x	Lightmaster Side Kit
4x	Divine™ 160
4x	iSpiider™ 160
8x	LEDBeam 150™ FWQ









Maxim Gorki Theatre Berlin

The renowned Maxim Gorki Theatre is in the heart of bustling Berlin, Germany and was founded in 1952 originally as the Deutsches Theater, then renamed after the famous Russian writer Maxim Gorki in 1954.

The theatre has a long and rich history, having been a major cultural institution in East Germany during the Cold War era. Today, it is known for its cutting-edge productions that address contemporary social and political issues, and its commitment to promoting diversity and inclusion both on and offstage.

The theatre has also invested in 23x T2 Profiles. The T2 maintains the amazing colour finesse of Robe's massively successful T1 series, featuring the MSL (Multi-Spectral)

LED engine, and the T2 Profile provides an enhanced output of over 22,000 lumens, measured at the front lens, via its 850W MSL source.

With a zoom range of 5–55°, the T2 Profile is perfect for longer-throw applications, and like the T1, it features a host of refinements developed for this demanding performance genre.

The theatre's repertoire includes a wide variety of plays, ranging from classic works by Shakespeare and Brecht to contemporary plays by emerging and established playwrights from around the globe. Productions are known for their innovative staging and use of multimedia elements, as well as their engaging and thought-provoking performances.

Products used:

23x T2 Profile™



Staatstheater Kassel

The Staatstheater Kassel (State Theatre of Kassel) is a historic theatre in Kassel, Germany, that was founded in 1909 and has since become a major cultural institution in the region.

The theatre comprises three stages: the Opera House, the Drama Theatre, and the Studio Theatre. It offers a wide range of productions, including classical operas, contemporary plays, musicals, dance performances, and children's theatre.

Recently the Staatstheater has invested in Robe FORTES and two RoboSpot systems, wanting the power and advanced features of the FORTE for their largest space.

RoboSpot has become a popular choice for remote follow spotting in theatres, often saving space and enabling operators to work in safer and more comfortable conditions. Creatively it means that multiple

lights on the rig can be used with the system at different times and also utilised for other tasks on the rig.

The Opera House, which was built in the neo-Baroque style, has a seating capacity of 1,200 and offers a repertoire of classic and modern operas.

The Drama Theatre seats 450 and hosts a range of productions from classical plays to contemporary dramas; while The Studio Theatre accommodates 100, and is hot bed of experimental and avant-garde performances.

The Staatstheater Kassel is also known for its educational and outreach programs, which include workshops, tours, and lectures for children, young adults, and families. It collaborates with local schools, universities, and other cultural institutions to promote the arts in the community.

Products used:

19x FORTE®
2x RoboSpot™



Staatsschauspiel Dresden

The Staatsschauspiel Dresden in Germany joins a long and growing number of high-profile performing arts venues that have invested in Robe's T1 series of moving lights, a refined product line tailored to meet the exacting demands of this sector.

The 52 T1s – 20× T1 Profiles and 32× T1 Fresnels – were specified by Staatsschauspiel's head of lighting and video, Andreas Barkleit, after careful consideration.

The Staatsschauspiel Dresden runs two venues – The Schauspielhaus in the old town with 788 seats and the Kleines Haus in the Neustadt area which offers three halls with 400, 150 and 99 capacities respectively plus the Kleines Haus Mitte which can accommodate up to 60 people. The main focus is on theatrical performance,

but the vibrant program – in a standard year – will also feature music, dance, concerts and spoken word performances.

Investments in new technology are made with a 10-year lifespan in mind. Andreas had been looking at Robe's T1 series since its launch. At the Prolight 2019 expo in Frankfurt, he saw it in action for the first time, then after five shootouts at the theatre the order was placed ... after the T1 prevailed as the best option!

The most important reason T1 was chosen was for the additive colour mixing with its perfectly operating dedicated CTO and CTC channels, which Andreas describes as “innovative and truly impressive!”

Products used:

20×	T1 Profile™
32×	T1 Fresnel™
12×	LEDBeam 150™
4×	Strobe IP
8×	T2 Profile™



PHENIX



MENTAL

Thalia Theatre

Budapest's Thalia Theatre is in the 'Pest' side of the Hungarian capital and is a renowned producing and receiving house, presenting around 600 different productions per year. It is one of Hungary's best-known venues for staging musical comedy shows on its busy three stages, the largest of which has a 520-seat auditorium.

In 2019, the theatre invested in Robe's DL7S LED Profiles and Spiider LED wash lights – which are the first to be installed in a Hungarian theatre venue. The luminaires were chosen by head of lighting Karoly Bodon and his team, and delivered by Robe's Hungarian distributor, AVL Trade.

The new fixtures are currently all in use on the main stage, and there are another six DL4S profiles on order which will be utilised for the second stage when its current refurbishment is complete.

The theatre is operated by the city of Budapest, but the new investment was financed by a combination of the district and national government.

The decision to upgrade the main stage lighting came whilst work was being done on the Winter Garden second stage, when it was also decided that the time was also right to replace the old main stage lighting with some newer and more efficient LED options.

Previously, they had only conventional lighting in the main house, so it was a big decision to go for both LED and moving luminaires simultaneously.

Products used:

13x DL7S Profile™
29x Spiider®



Theatr Muzyczny Roma

The acclaimed Roma Musical Theatre is in Warsaw, Poland, and well known for its spectacular musical productions, complete with elaborate lighting, sets, costumes, and choreography.

In recent years, the venue has made substantial investments in Robe moving lights which have enhanced the ability to stage a wide variety of shows, including classic Broadway musicals, original productions, and adaptations of popular films and books.

The inventory includes five T2 Profile, 24× T1 Profile, four BMFL FollowSpots together with four RoboSpot BaseStations, six LEDWash 800s, 14× LEDBeam 350s and 30× Spiiders ... all of which boost their scope of being able to produce truly world-class shows.

The theatre was founded in 1954 by Stefan and Wanda Kisielewski, who were both respected figures in Polish music and culture.

In addition to its artistic offerings, the Roma Musical Theatre is also an important cultural institution in Poland. It has played a key role in preserving and promoting Polish music and theatre and has provided a platform for many talented artists and performers over the years.

Today, the theatre continues to be a beloved institution in Warsaw and a popular destination for theatregoers from around the world.

Products used:

24×	T1 Profile™
5×	T2 Profile™
4×	BMFL™ FollowSpot
4×	RoboSpot™ BaseStation
6×	LedWash 800™
14×	LedBeam 350™
30×	Spiider®





LED



Teatr Dramatyczny

The Teatr Dramatyczny m. st. Warszawy (Dramatic Theatre of the capital city of Warsaw) has a number of Robe products in the house including T2 Profiles, Spiiders and Tarrantulas.

This important venue has been at the forefront of producing Polish drama since 1949 and has been ensconced in the Palace of Culture and Science venue since 1955.

There are two performance spaces – ‘Big’ and ‘Little’ stages – at the Palace of Culture, and the company also runs programmes in two other buildings around the city.

These four stages offer a busy and vibrant schedule of modern, classical and new works with a reputation for excellent acting and tackling relevant contemporary issues. Each space stages between 10 and 12 shows a year, primarily their own productions, which equals a lot of annual performance activity!

The Tarrantulas were the first Robe fixtures to be permanently installed in the building! These and the other fixtures met all the tender requirements and offered the best value for the money due to their multi-functionality.

Products used:

5x	T2 Profile™
6x	Spiider®
10x	Tarrantula™
1x	FOG 1550 FT™





Gdańsk Teatr Szekspirowski

Highly acclaimed cultural institution Gdański Teatr Szekspirowski – the Gdańsk Shakespeare Theatre – was built in 2014 and dedicated to the works of William Shakespeare.

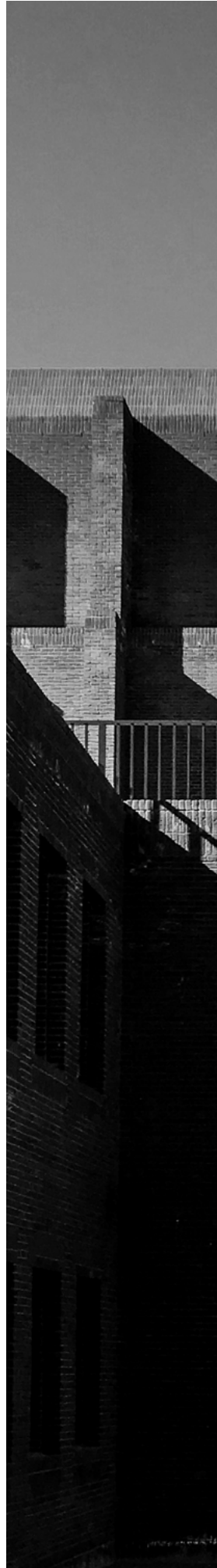
The theatre – the first in Poland specifically designed for Shakespearean performances – now benefits from Robe's T1 Profile luminaire, which has been carefully crafted for exacting theatrical environments.

The T1 Profile T1 offers refined CMY colour control and DataSwatch filters with a selection of pre-programmed colours using the new generation RCC (Robe Colour Calibration) algorithm, and 2,700K to 8,000K CCT control, so all variations of colour are possible. Theatrical grade dimming and a CRI of 95+ for fabulous natural skin tones have made it a favourite for all performance applications.

Gdańsk Shakespeare Theatre was built on the site of the key port city's original Elizabethan theatre, established in the 17th century by English merchants who had settled there. The award-winning theatre building was designed by Italian architect Renato Rizzi and features a 630-capacity main stage and a smaller studio theatre for 200 Shakespeare lovers.

Products used:

11x T1 Profile™





Theatre Royal de La Monnaie De Munt

The impressive façade of the Theatre Royal de la Monnaie de Munt (Royal Theatre of the Mint) in central Brussels dates to 1818 and announces The National Opera of Belgium in great style and presence. Belgium's leading opera house is a federal funded institution taking the name of this theatre in which it is housed – 'La Monnaie' in French or 'De Munt' in Dutch – referring both to the building and the opera company itself.

The theatre made a new lighting investment comprising Robe T2 Fresnels plus Robe Tetra1 and Tetra2 moving LED battens, which join its existing Robe T1 Profiles, two RoboSpot Systems running with T2

Profiles and 16x Robe DL7S Profiles which were the first Robe purchases back in 2016.

Head of lighting Koen Raes explains that the main house will typically stage 8 opera productions per year in their 1,200-capacity main house, of which around seven are usually new works plus one revival. All shows are acclaimed for their outstanding production values, talented artists, and creatives. This dynamic and interesting programme is original and exclusive to the Theatre Royal, whose house crew works with different external creative teams, but all the production elements are sourced where possible from the vast in-house resources.

Products used:

8x T2 Fresnel™
4x Tetra1™
24x Tetra2™











Det Norske Teatret

Det Norske Teatret (The Norwegian Theatre) in Oslo houses three stages in its main building in vibey downtown Oslo, plus one more in another venue in the city run by the same team, all of which work on a busy repertory schedule. Together, at least 25 original and cutting-edge productions are created annually, in the Norwegian language of Nynorsk, and some guest works are hosted.

Also known for high production values, the theatre has recently invested in 15x Robe ESPRITE moving lights for its 250-capacity Scene 2.

The theatre's resident lighting designer Torkel Skjærven explained that they previously had Robe ColorWash 750AT Tungsten moving lights in the black box Scene 2 space, and these have worked hard and reliably for over 10 years! However, the

time arrived to replace them with a more modern LED light source.

While extremely pleased with the older Robe fixtures, Torkel and a team of assessors considered several different options, and once again chose a Robe solution, with ESPRITES proving to be the best and most appropriate luminaire for their requirements.

Scene 2 offers an eclectic programme that embraces contemporary dramas and new works, from the experimental to the classics, so they need an adaptable lighting rig.

“The ESPRITES are primarily used as part of Scene 2's permanent back lighting rig,” elucidated Torkel, “but as some of the principal lights used for several tasks, they needed to have multiple features.”

Products used:

15x ESPRITE®



Kunstmin Dordrecht

Schouwburg Kunstmin is a theatre and performing arts venue in the Dordrecht, the Netherlands, which has invested in Robe's T1 Profile LED moving lights – a stylish and refined energy-efficient luminaire designed with the demands and precision of theatre lighting at its core.

The sale – delivered by Robe's Benelux distributor Controllux – was just before the pandemic shut down the industry in March 2020. Now re-opened with the industry back on its feet, the theatre has added more T1s to the inventory to replace their ageing 2Ks on the FOH bridge with an LED source.

Head of lighting Bart Meester and head of technical and facilities Martijn Lohuis were both involved in this latest Robe

investment. Bart has been head of lighting at the venue for 15 years.

It followed another set of T1s, LEDWash 300+'s and LEDBeam 150s purchased in 2019 for M3, a fully flexible 'bare floor' performance space just up the road at Energiehuis, a reimagined old power station building now dedicated to culture and the arts. This vibrant multiple-hall, multi-purpose venue is used by several different promoters and organisations, and M3, its largest space, is programmed and run by the team from Schouwberg Kunstmin.

Separate from that, other halls and rooms in Energiehuis also contain various Robe fixtures that have been supplied over recent years by Controllux.

Products used:

8x T1 Profile™
16x LedBeam 150™ FW









Market Theatre Johannesburg

Johannesburg's multi-award-winning Market Theatre has been on South Africa's political, cultural, and social frontline since 1976 when it opened as an independent, anti-racist producing house at the height of the apartheid era. Championing a diverse collage of edgy, raw, authentically African work and creativity, it's helped to give a voice, ask leading questions, and build solidarity for those who have been silenced and ignored.

Located right downtown in the lively Newtown area of South Africa's bustling commercial epicentre, it continues to offer innovative new works, a forum for

free-thinking and stands out as one of the most significant and critically acclaimed drama and live performance venues in the southern hemisphere.

In 2021, the Market Theatre took delivery of 50x Robe T1 series LED moving lights as part of an up-grade initiative emanating from SA's Department of Arts & Culture which is looking to the future and boosting suitability across the arts.

These new Robe luminaires will be used across the venue's three main performance spaces – the John Kani, Barney Simon, and Mannie Manim.

Products used:

26x T1 Profile™
24x T1 Washes



Ljubljana Puppet Theatre

Ljubljana Puppet Theatre (Lutkovno Gledališče Ljubljana) is famous for both puppet productions and live acting dramas, musicals, and other performance entertainments in and around its various spaces, which are also available for business events.

The 200-capacity Saint Jacob's (Šentjakobsko) Hall auditorium re-opened in 2021 after a complete 8-month renovation plan, and a technical upgrade that included the installation of 16 new Robe T1 Profile LED moving lights in the Saint Jacob's (Šentjakobsko) Hall.

They join more recent Robe purchases across the venue's other four performance spaces including The Tunnel which burrows into the hill beneath Ljubljana Castle and has 12× CycFX8s which are perfect for lighting the long corridor audience areas. The 180-seat St Jacob's Stage, the Main Stage, Small Stage and the Stage Under the Stars located on the top floor with

a glass roof up to the night skies all share 12× LEDBeam 150s and nine LEDWash 300+'s which can be moved around for different shows as needed.

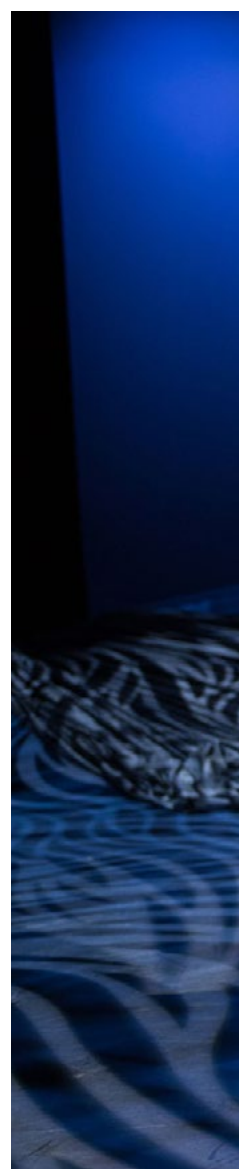
The Robe fixtures were all selected by technical manager Jure Žnidaršič and his team, and based on their performance, features and the success of the theatre's longer-term investments in Robe which started in 2011.

With the Saint Jacob's (Šentjakobsko) Hall refurbishment, Jure and his colleagues knew that anything new needed to be LED, and in this instance, they specifically wanted a light with excellent additive colour mixing.

Having seen the T1 Profiles in action during open days and other events and demonstrations organised by Robe's Slovenian distributor, MK Light Sound, they were all confident that this was the right choice.

Products used:

16× T1 Profile™
+ numerous other Robe fixtures









CAPTIV



WATING

Théâtre du Châtelet

The Théâtre du Châtelet, an iconic arts and cultural landmark venue in the 1st arrondissement of Paris, designed by Jean-Antoine-Gabriel Davioud and completed in 1862, re-opened to the public in 2019 after several years of extensive renovation work.

Forty Robe T1 Profile moving lights are now part of the lighting rig at the 2,500-capacity theatre which has regained its youthful appearance with a complete backstage electrical and scenographic re-fit that has seen ageing sound and lighting equipment replaced by modern technology meeting the venue's contemporary requirements.

Initially, 36× T1 Profiles were supplied to the venue by Robe France to replace the old non-automatic projectors in front of and above the stage. There was an urgent need

for lighting that would improve the whole experience for audiences, artists, lighting designers and technicians explained Bernard Maby, Théâtre du Châtelet's lighting manager for nearly 30 years.

For Bernard and the lighting team, one of the T1's greatest strengths is its patented framing shutters module with 4 individually positionable blades and $\pm 60^\circ$ rotation of the complete frame system.

The initial delivery of 36× T1 Profiles was upped to 40, and the theatre also more recently invested in four ESPRITE FollowSpots and four RoboSpot BaseStations for remote follow spotting.

Products used:

- 40× T1 Profile™
- 4× ESPRITE® FollowSpot
- 3× RoboSpot™ BaseStations



Den National Scene

The first Robe FORTES in Norway were delivered to Den National Scene (the National Theatre) in Bergen, one of the country's oldest permanent theatres, where they joined Robe ESPRITES that were another recent investment.

Opened in 1909, Den National Scene was initially built with a single stage, but currently hosts performances in three different spaces, which have just re-started with full-capacity public shows post-pandemic.

Head of lighting Geir Hovland explained that these latest moving light investments are part of an ongoing process to ensure the theatre is equipped with the best and most appropriate technology to facilitate its busy – and highly acclaimed – repertory schedule.

When the ESPRITES arrived, the DL7S Profiles were moved to the FOH lighting array, allowing Geir and the team to

change-up the previous front lighting fixtures – from another manufacturer. The ESPRITES have replaced them on the over-stage rig.

The FORTES were then specified as the end-of-pipe (over-stage) fixtures, filling the positions with the longest throws.

Geir and his colleagues like “everything” about the FORTES and ESPRITES and in particular the quality of the light output, the silent running and the “excellent” pricing.

A combination of all these elements made them a winner for Den National Scene. “Overall, I am extremely happy with Robe’s reliability and build quality – they are simply great lights,” Geir enthused.

Products used:

2x	ESPRITE®
7x	FORTE®
25x	DL7S Profile™
15x	DL7F Wash™
25x	LEDBeam 150™







Schouwburg Kortrijk

Schouwburg is the municipal Theatre in Kortrijk in the West Flanders region of Belgium, and is located right at the heart of this attractive city in Schouwburgplein (Theatre Square). Flanked by several historic buildings, it offers two stage spaces, an 800-seater main hall and a smaller 120-capacity space that is scheduled for a complete rebuild over the next two years.

The Theatre has recently invested in Robe T1 Profile and LEDBeam 150 moving lights as it prepared to return to a full post-pandemic programme of live performances.

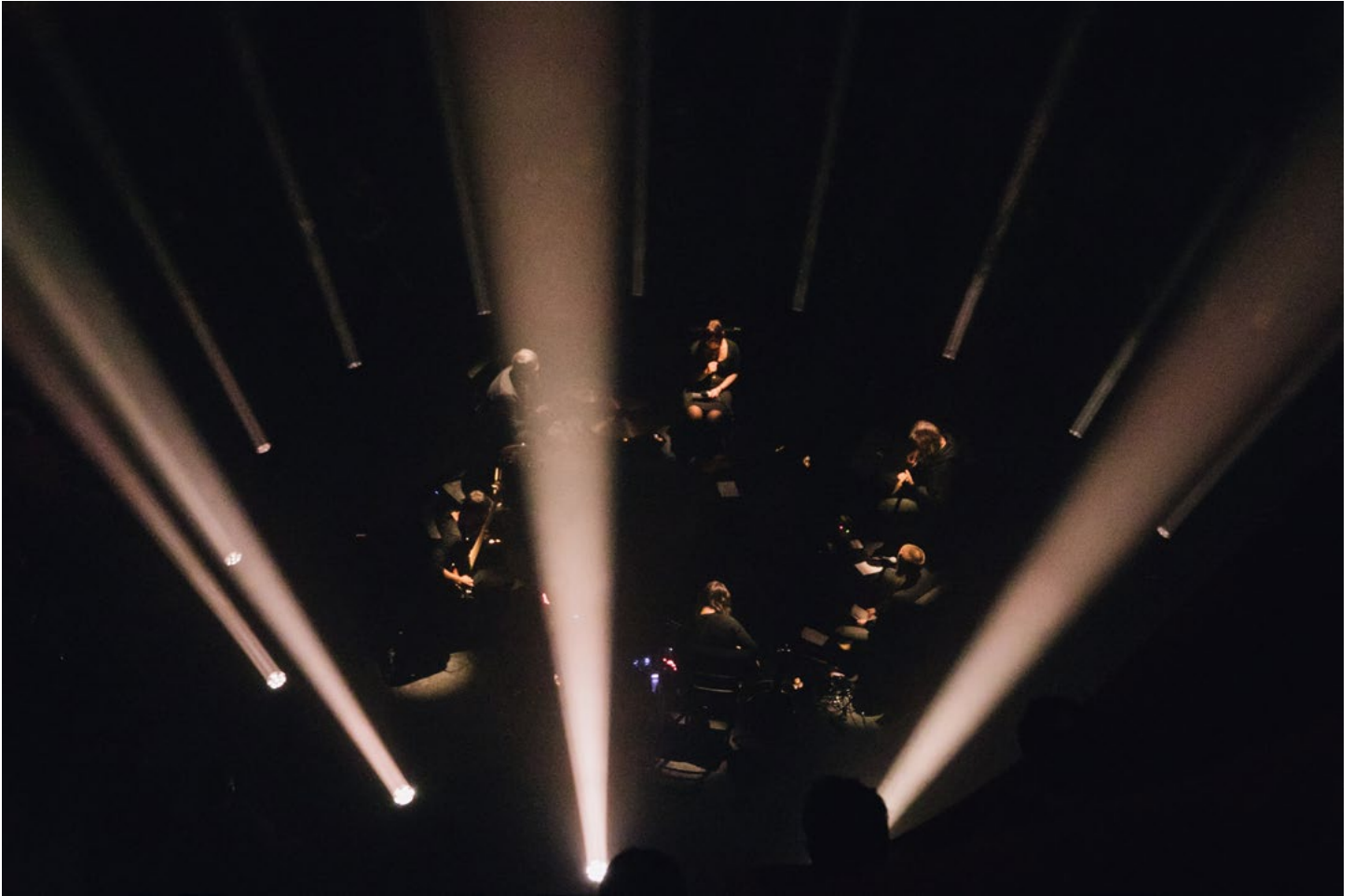
As an A-List theatre with a regular stream of high-profile productions, Stadsschouwburg is a great reference site for Robe and another acclaimed showcase for T1s.

The Schouwburg Kortrijk's newest Robe moving lights were a recommendation by lighting technician Lander Riemaeker who has worked there for eight years and often lights the venue's own productions. He also engages in external freelance work as an LD, programmer, and operator.

Products used:

12× T1 Profile™
16× LEDBeam 150™







MAG





Kunsthøgskolen

Kunsthøgskolen – Oslo’s National Academy of the Arts – is a high-profile university college in the Norwegian capital which is dedicated to education in design and fine art (including graphics, furniture, and clothing design) and the visual and performing arts.

The visual and performing arts faculty covers multiple genres – theatre, drama, opera, dance, ballet, jazz, etc., offering undergraduate and master’s degrees, and has 9 busy stages that present 50–70 productions a year.

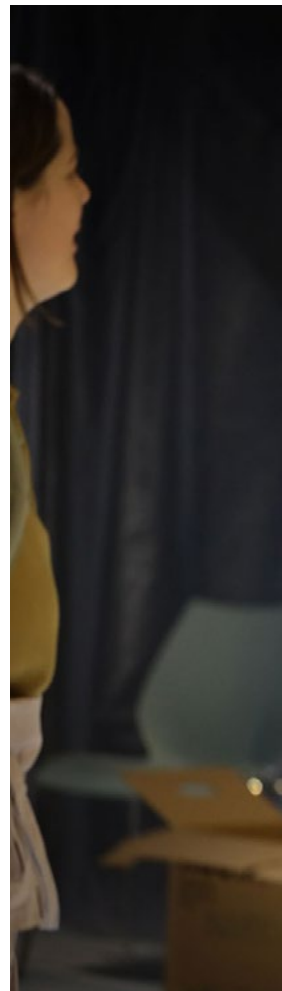
Head of lighting for this busy and lively environment is Ronnie Tunglund, who recently co-ordinated the specification and purchase of 20× Robe ESPRITE moving lights to be used across the various stages.

Kunsthøgskolen’s 1,000 plus dimmer channels feeding the various stages were starting to age, explained Ronnie – who has been overseeing lighting at the academy for four years – and they were allocated a budget to upgrade the lighting system. This resulted in around half being replaced and the other half being converted to hard-power channels with the remaining money spent on new, more sustainable, and greener lighting that would serve their needs for years to come.

Debating whether to get washes or spots, Ronnie decided that a multifunctional light would offer the best solution for current and immediate future needs, and after a demanding selection process, chose ESPRITES.

Products used:

20× ESPRITE®





Amare

The brand-new Amare building is an arts, culture, and educational hub on the Spui in Den Haag, the Netherlands which opened in 2021 at the heart of this lively capital city, after six years of construction. Built on the footprint of the old Lucent Danstheater, Amare is a new centre for excellence and houses the Dance and Music Center, The Hague Foundation, the Residentie Orkest, the Nederlands Dans Theater (NDT) and the Royal Conservatoire.

Offering a 1,500-capacity Concert Hall (2,500 standing) and a 1,300-seater Theatre plus two other performance halls and extensive rehearsal facilities, it was a big deal to get over 100 Robe moving lights specified for the project.

These are a mix of 86× T1 Profiles and 30× T2 Profiles plus 60× ParFacts all supplied by Robe's Benelux distributor Controllux and installed in the two primary venues and their main black box space.

The requirement was for lighting that would assist both the Concert Hall and the stage, all genres of dance, plus theatre and concerts.

Arjen Bijtelaar, the venue's stage manager specialising in lighting, explained that the original tender was for profile LED luminaires offering full white and multicoloured colour control.

The venue already had a good experience with Robe as one of the first in the country to invest in the DL7 series in 2016.

Of the 30× T2s, eight are on used for the Concert Hall FOH, with four on one of the

upstage bars, and the remaining 18 fixtures are in the Theatre, at FOH and in some of the side positions.

The additional power of the T2 Profile made it perfect for the job and the 30-metre throw from the FOH positions to the stage.

The extra intensity of the T2 Profile allows them to light beautifully right to the back of the Concert Hall stage which is around 40 metres from the source.

The T1s originally intended for the Concert Hall's FOH bridges are deployed in other positions around the venue, mostly on the advance bar with some in the side balcony positions, with the four other T2s replacing the previous FOH positions.

The remaining 18× T2 Profiles are in the Theatre.

The Concert Hall features a diverse entertainment programme, anything from full symphony orchestra performances to intimate baroque music to full on pop and rock shows. The Theatre primarily stages ballet, musicals and operas, and the different Amare spaces are also available for events, private and commercial hires and other uses.

Approximately 4 shows a week are staged in both the Concert Hall and the Theatre plus rehearsals, so the schedule for both is constantly and consistently busy.

Products used:

86×	T1 Profile™
30×	T2 Profile™
60×	ParFacts™



Croatian National Theatre of Split

The Croatian National Theatre of Split continues its commitment to Robe moving lights with regular rentals of ESPRITES to work well alongside their house LEDWash 600s which are in daily use in the venue's 650-capacity main house.

This operates a repertory programme throughout the year, packed with a wide range of drama, opera, and ballet productions.

Head of Lighting Branimir Bokan explained how they are also currently in the process of upgrading all their lighting to LED.

The first LED moving light purchase was the LEDWash 600s, but before that they had other Robes in the house with six ColorWash 575s purchased around 2007 which are still working hard.

This great experience and longevity were among the many reasons they continued to invest in Robe.

The Croatian National Theatre of Split first looked at Robe LED moving light fixtures after other influential theatres in Croatia took this route, including Zagreb Theatre and half a dozen other high-profile venues throughout the country.

Bran likes the fact that Robe started as a small independent company and is still independent despite massive growth over the last decade. He thinks there has been plenty of “smart product development” over the years, especially in relation to products suitable for theatre, like the T series range and others.

Products used:

ESPRITE®
LEDWash 600™



Det Ny Teater

Copenhagen's Det Ny Teater (The New Theatre) invested substantially in new Robe moving lights in 2022 with the purchase of 16x Robe T1 Profiles that joined the house rig together with an additional 20x Spiiders (bringing the total to 30).

Also new are two RoboSpot systems with two T1 Profile FollowSpots, plus 11x Tetra2 moving LED battens and 18x LEDBeam 350s.

This was possible thanks to financing via the AP Møller Foundation, and the fixtures were delivered by Robe's Danish distributor Light Partner. All these fixtures are in daily use to facilitate Ny Theatre's busy repertory schedule.

Apart from the desire – and increased requirement – to be as sustainable as possible, the power saving of LEDs was a big advantage in the quest of getting the fixtures into Det Ny Teater.

Located centrally in the vibrant Danish capital, the cosy 1,000-capacity venue dates to 1908.

Products used:

16x	T1 Profile™
30x	Spiider®
2x	RoboSpot™
2x	T1 Profile™ FollowSpots
11x	Tetra2™
18x	LEDBeam 350™





Vanemuine

Vanemuine is Estonia's oldest theatre and located in the country's beautiful 'second city' of Tartu. The venue was founded in 1906 and is internationally famous and renowned for its action-packed programme of spectacular and eye-popping productions that embrace the genres of opera, ballet and large-scale musicals. They also stage orchestral concerts.

The name "Vanemuine" comes from the Estonian mythological goddess of poetry, singing, and dancing.

Under the guidance of head of lighting Andres Sarv, Vanemuine has invested steadily in Robe moving lights over recent years, and now has a large house lighting rig of Robes at the disposal of its own lighting department and visiting local international LDs who are frequently working there.

In the last three years, Robe T1 profiles, DL7S profiles and ParFect 150s have been added to the house rig, joining the 200+ other Robe luminaires in the house, including LEDWash 300s, 600s and 1200s and MMX Spots among others.

Having Robe in the house has facilitated huge flexibility and offered a wide range of creative solutions to all working at the lighting department.

Vanemuine theatre has three different stages: the big theatre house, the small theatre house, and the concert hall.

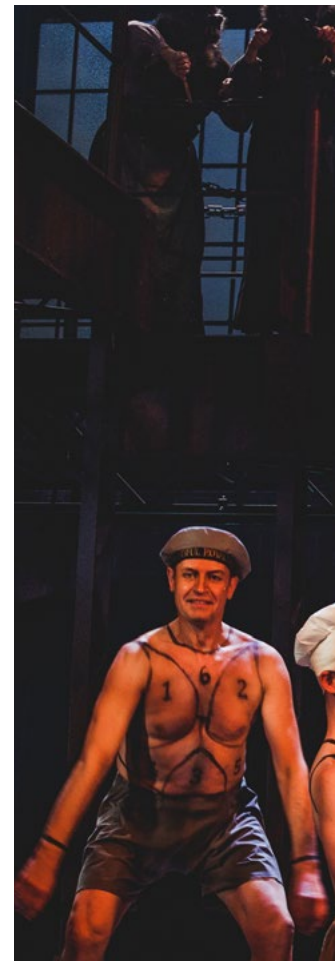
The big theatre can accommodate over 700 spectators, the small theatre house stages experimental theatre and chamber music concerts amongst other performances, while the separate concert hall space is used for orchestral and choral concerts as well as conferences and other events.

Vanemuine theatre is known for its high-quality productions and has been recognized with numerous awards and accolades throughout its history.

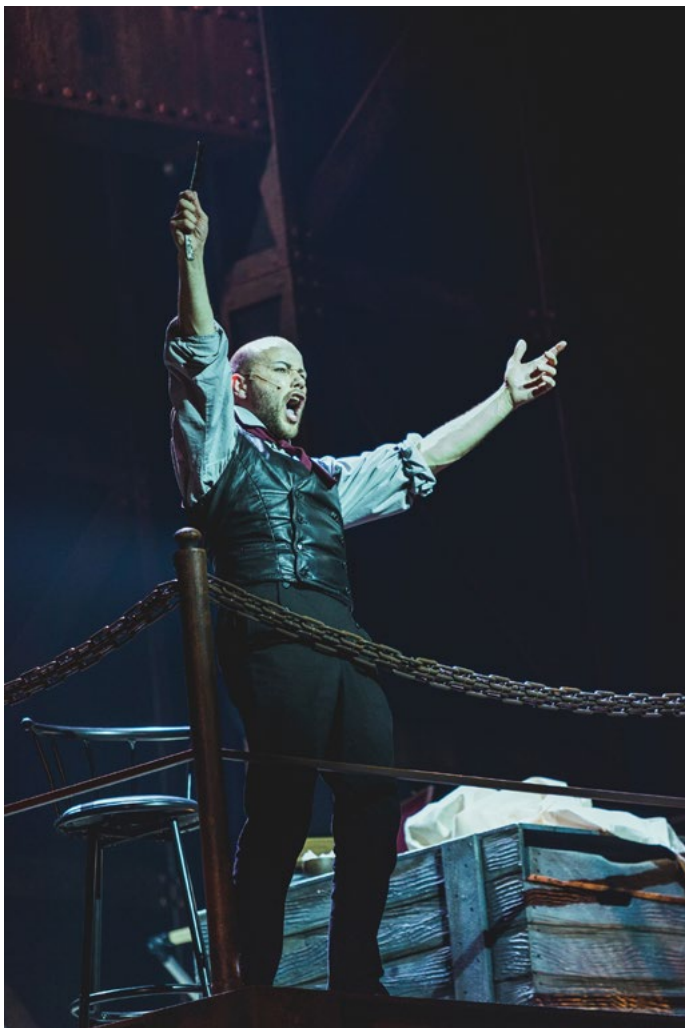
It is also a vital part of Estonia's cultural landscape and plays a significant role in the country's artistic and intellectual life.

Products used:

- 20x MMX Spot™
- 56x LedWash 600™
- 52x LedWash 1200™
- 12x 600E Spot™
- 8x DLX Spot
- 24x CitySkape Xtreme™
- 12x LedWash 300™
- 8x DL7S Profile™
- 12x T1 Profile™
- 6x ParFect 150™











EMOTI

IONIAL



Cameri Theatre

The Cameri Theatre in Tel Aviv is one of the busiest and most recognised in Israel, and since 2003 has been located in the vibrant cultural hub that is the Tel Aviv Performing Arts Centre.

Founded in 1848 shortly after the State of Israel itself was formally established, the theatre is focused on producing local works. It has five halls, the largest with a 1,000 capacity ... and has recently invested in Robe ESPRITE moving lights and Tetra2 moving LED battens.

These were the first moving lights in the venue and were initially purchased for a production of Kaymim Achadim lit by Nadav Barnea, explained technical manager Shabi Aaron Nahum, who is delighted with the new fixtures.

The very first Robes in the house were ParFects, so they were familiar with the brand through these and generally. After making the decision to invest for the production, they specifically needed lights with good shuttering, zoom and dimmer curve as the 7× ESPRITES are deployed on the front bridge.

ESPRITE has become an increasingly popular choice for theatre and performing arts venues since its launch.

The 20× Tetra2s are rigged on the upstage bars of the Cameri's main hall and were also picked for the intensity and colour, as well as to illuminate an 8-metre-high rear screen, which they wash evenly and seamlessly.

Products used:

7× ESPRITE®
20× Tetra2™





Ramat Gan Theatre

Beit Zvi School for the Performing Arts is an acting school with an associated Theatre located in Ramat Gan city, Tel-Aviv, Israel. All the School's production shows are staged in the 350-capacity venue, together with other performances organised by the Ramat Gan municipality, all now benefitting from a full lighting upgrade that included the addition of Robe moving and static LED luminaires.

In 2021, sales and installation company Danor Theatre & Studio Systems won the tender to upgrade the lighting system, a contract that saw the supply of new fixtures, dimmers, and a lighting console,

complete with 20× Robe ParFect 150 RGBWs, 6× VIVA CMYs and two T1 Profiles.

In the same installation, the over-stage pipes were also renewed with a mixture of manual and electronic winched bars, and the process also finally saw the replacement of two heritage Robe Club Spots which “had been there for at least 14 years and were STILL working,” comments Danor's Erez Hadar with raised eyebrows.

They were among the newer fixtures, some of the old PCs, fresnels and other conventionals that were replaced pushing around 30 years of service!

Products used:

20×	PerFect 150™ RGBW
6×	VIVA™ CMY
2×	T1 Profile™



Bellevue Teatret

Bellevue Teatret (Bellevue Theatre) is located in Klampenborg, a desirable suburb north of Copenhagen, Denmark. Its scenic location is about 100 metres back from the beach, and stunning views from the front of the building overlook the Øresund strait.

Founded in 1936 and designed by architect Arne Jacobsen, the building is one of his seminal works – and one of several in the area – as well as an important example of Danish functionalism.

In the last year, the theatre has invested in more Robe moving lights, with the purchase of 12× TX1 PosiProfiles – the first to be installed in Denmark – joining their 24× LEDBeam 350s acquired in 2021.

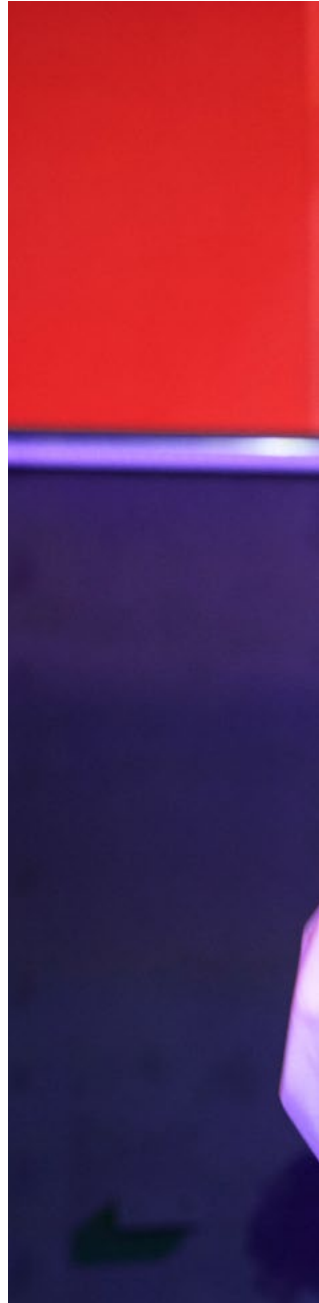
The fixtures were chosen by production manager Bjarne Olsen and technical manager Marten Vive Rasmussen for their 746-capacity main house.

The Theatre – hugely popular with both the local community and a wider audience of theatre fans – stages four productions a year and is acclaimed for its family-friendly content.

It hosts a variety of performances, including plays, musicals, dance shows, and concerts, and in addition to the Main House, the smaller stage – The Bar – is used for experimental and contemporary works.

Products used:

12× TX1 PosiProfiles™
24× LEDBeam 350™





Brno City Theatre

Brno City Theatre – Městské divadlo Brno – is a repertory theatre located in the beating heart of Brno, the Czech Republic's second city, an important cultural hub that focuses on both dramatic and music productions, mainly musical theatre, and is renowned for its quality productions.

The building has two performance areas – a 365-capacity drama stage, and the Music Theatre stage for an audience of 680.

Central to the Musical Stage lighting rig are Robe's T1 Profiles and T1 Fresnels, DL7S Profiles, LEDWash 600+s, LEDBeam 100s and LEDBeam 150 FWs, part of an investment process in the brand that started in 2015.

The T1s were chosen for their power, flexibility and colour mixing which facilitates virtually any colour, among other features.

More Robe products grace the drama theatre – DL4F Washes, T1 Profiles, LEDWash 800s and LEDBeam 150 FWs.

The Robe purchases have been spearheaded by the house lighting designer David Kachlir who is a big advocate of Robe. Having access to all these multi-functional luminaires has made a huge difference to how he and his colleagues can creatively light each show.

The venue now has over 100 LEDBeam 100s in the inventory and has further purchased iParFect 150s for its outdoor summer season stages.

Brno City Theatre productions are as well-known for their artistic excellence and their technical prowess and innovative approach, with the theatre winning numerous awards and accolades.

Founded by director Milan Pasek and his followers in 1945 shortly after the end of the Second World War, and then known as the Svobodné divadlo (Free Theatre), it hosted mainly young artists wanting a second theatre in the city, and a space where they could perform more incisive works by contemporary writers.

After several name changes, in 1990 it became the Městské divadlo Brno (Municipal Theatre Brno) and in the same year Jan Kolegar was elected as its director. Jan Moša, former producer, dramatist and since 1990 the artistic director of drama, became the director in 1992 and was responsible for the reconstruction of the former cinema on Lidická street which is now home to the very busy and successful Brno City Theatre.

Products used:

6x	LEDWash 600™
13x	DL7S Profile™
7x	T1 Fresnel™
2x	T1 Profile™
22x	LEDBeam 100™
8x	LEDBeam 250™ FW
10x	DL4F Wash™
3x	LEDWash 800™
3x	LEDBeam 150™ FW







Czech National Theatre

The Czech National Theatre (České Národní Divadlo) is a historic theatre located prominently on the riverbank in central Prague, the beautiful capital city of the Czech Republic. It is one of the country's most important cultural institutions and plays a significant role in the development of Czech theatre, opera, and ballet.

The theatre was founded in 1868 as a result of the Czech National Revival, a movement aimed at promoting the Czech language and culture and built with the support of several prominent Czech figures, including Antonín Dvořák, Bedřich Smetana, and Jan Neruda.

Today, the Czech National Theatre consists of three main venues: the historic National Theatre building, the modern New Stage (Nová Scéna), and the Estates Theatre (Stavovské Divadlo), each hosting a variety of performances throughout the year.

Robe moving lights were first installed in the historic National Theatre building in 2018, with BMFL Blades and Tarrantulas

with beam shapers and wireless DMX chosen for their long throw power and multiple features.

In 2019, these were joined by 16x ESPRITES and then three Tetra2s the following year. In 2022, as everything re-energised after the pandemic, another three Tetra2s were added, together with more Tarrantulas and 10x T2 Profiles.

Also in 2022, four FORTES and five ParFect 150 FWQ RGBW's were added to the house lighting rig in the Nová Scéna.

T1 Profiles were installed in the Stavovské Divadlo in 2019 and 2021 together with LEDWash 600s.

The State Opera in Prague is also part of the National Theatre of the Czech Republic. It was founded by the Ministry of Culture in 1992 although the theatre itself originally opened in 1888 as the New German Theatre and was known as the Smetana Theatre between 1949 to 1989.

Products used:

National Theatre Historical building

10x T2 Profile™
6x Tetra2™
22x Tarrantula™
16x ESPRITE®
12x BMFL™ Blade

National Theatre Nová scéna

10x FORTE® EP – WiFi
5x ParFect 150™ FWQ

National Theatre Stavovské divadlo

5x T1 Profile™
6x LEDWash 600X™
5x FORTE®

National Theatre Opera house

2x T1 Profile™
4x Tetra2™

Between 2019 and 2021, the Opera House has also added Robe moving lights to its inventory, with T1 Profiles and Terta2s.

The imposing Czech National Theatre building was designed by the architect Josef Zíték and his student Josef Schulz in a neo-Renaissance style. The façade is adorned with statues of famous Czech artists and writers, including Smetana, Dvořák, and Karel Havlíček Borovský and it has also become a must-see visitor attraction for those interested in Czech culture and history.





Act 2

OPERA HOUSES

Paris Opera Palais Garnier and Opéra Bastille	98
L'Opéra Berlioz Corum de Montpellier	102
La Scala Milan	104
Israeli Opera	106
Hungarian State Opera House	110
Vienna State Opera	112



"I always say that ninety-nine and forty-four-hundredths of the audience does not pay any attention to the lighting, but one hundred percent is affected by it."

– Jennifer Tipton, lighting designer



A man with a beard, wearing a plaid jacket and blue gloves, is captured in a dynamic pose on a stage. He is pointing his right hand forward and has his left hand raised near his head. The background is a dark blue stage with a thick layer of white smoke or fog. Large, white, 3D-style letters spelling 'ECTED' are positioned in the foreground, partially obscuring the man's lower body. The lighting is dramatic, highlighting the man and the smoke against the dark background.

ECTED

Paris Opera Palais Garnier and Opéra Bastille

As part of an inventory renewal of static profile luminaires, the Paris Opera ordered nearly 300x Robe T11 Profile and T11 PCs, which join the 200x T1 and T2 Profiles already in place at the primary opera and ballet company of France.

All the fixtures are supplied via Alterlite, and like the T1 and T2 moving heads, the T11s will be distributed between the Opera's two landmark venues in the French capital, Palais Garnier and Opéra Bastille which are central to the cultural life of Paris and France.

According to Jacques Giovanangeli, head of the lighting department at the Palais Garnier, "The T11 meets all the quality and performance criteria that we had set ourselves.

"The luminous flux and colourimetry meet our requirements and the locking of the framing shutters ensures that they will not go out of adjustment when the booms are moved."

For Nicolas Beaud, head of the lighting department at Opéra Bastille: "We chose to

replace the existing fixtures (halogen profiles and PCs), equipping our side booms with Robe T11s as part of the modernisation plan that involves switching to LEDs for the Opéra Bastille's lighting equipment."

"The versatility of the T11 allows us to use the same projector body and replace the front lens to obtain a profile or a PC. The quality of the colourimetry and the manual shutter system is perfect for our very specific needs."

The Opéra Bastille is located in the 12th arrondissement of Paris and was inaugurated in July 1989. The impressive building was designed by architect Carlos Ott, who won an international competition for the project. The venue has a seating capacity of 2,745, making it one of the largest opera houses in the world. The stage is also one of the largest, with a width of 66 metres and a depth of 24 metres that can be configured in multiple ways enabling dynamic presentation of a rich variety of productions.

The Palais Garnier is in Paris's 9th arrondissement of Paris. It was built from 1861

Products used:

Le Palais Garnier

120x T2 Profile™
21x T1 Profile™
80x T11 Profile™

Opéra Bastille

55x T2 Profile™
5x DL7S Profile™
2x DL7F Wash™
120x T11 PC™
90x T11 Profile™

to 1875 by architect Charles Garnier and is one of the most famous opera houses in the world. It can seat 1,979 and features a grand staircase, marble columns, and a large chandelier that weighs six tons! The auditorium is decorated in red velvet and gold leaf, with a large mural by Marc Chagall on the ceiling.

The Paris Opera was founded in 1669 by King Louis XIV and is one of the oldest and most prestigious opera companies in the world.







L'Opéra Berlioz Corum de Montpellier

Located in the heart of the historic city of Montpellier, the Corum de Montpellier is continuing its transition to LEDs and has chosen Robe T1 Profiles and T1 Fresnels to replace and upgrade the stage lighting in its two main halls: the Berlioz Opera (2,000 seats) and the Pasteur Auditorium (745 seats).

Service company Texen helped with the selection and integration of these LED fixtures.

Christophe Mora and Philippe Pujol, who are in charge of lighting at the Corum, commented, "After testing the T1 Profile, particularly with the Montpellier National Orchestra and Opera, we chose it for its excellent colour mixing, silence and ... relatively light weight compared to other equivalent sources," which makes things easier for their technicians and freelancers!

T1 was also chosen for its power which is perfectly suited for their theatres while also being very energy efficient, fitting their commitment to being more sustainable.

To date, nearly 60 Robe T1s are in service at the Corum in Montpellier.

Products used:

32x T1 Profile™
32x T1 Wash™



La Scala Milan

La Scala Milan, Italy – also known as Teatro alla Scala – is one of the most prestigious and famous opera houses in the world.

It now too features Robe's T1 profile in the house lighting rig, specified for all the reasons people in theatre love the T-series – high CRI for perfect facial tones, superlative colour mixing, smooth dimming, and precision framing shutters and many more features including the general overall quality of the light output.

Robe is exceptionally proud to be able to include this amazing venue in its references!

La Scala was inaugurated on 3rd August 1778, and was designed by the neoclassical architect Giuseppe Piermarini.

It has staged many of the greatest performances in the operatic history and La Scala is a must-visit for anyone interested in opera, classical music, or Italian culture.

The venue is famous for its exceptional acoustics and has hosted many of the most talented singers, conductors, and composers in the world. The seating capacity is approximately 2,000 and the impressive horseshoe-shaped auditorium offers excellent sightlines from every seat.

Products used:

- 68x T1 Profile™
- 13x T1 Fresnel™
- 28x DL7S Profile™





Israeli Opera

The world-renowned Israeli Opera House in Tel Aviv has invested in 27× Robe ESPRITE moving lights – the first Robe products in the house – as part of a drive to invest in more LED lighting fixtures and future-based technologies, explained head of lighting Eyal Levi.

The Opera House runs an average of 6 or 7 major productions per season, a mix of new and revivals, working with a series of leading international lighting designers and lighting directors, all known for their intricate work, critical eyes, and diligence. Opera is one of the most demanding performance genres to light.

Eyal arranged various tests and shoot-outs with a range of different products, from which ESPRITE was chosen as “the best-performing fixture to meet all our needs.”

Assisting in making this choice was the venue’s lighting department, comprising three programmers, two chief LX and 10 technicians, plus some key consultant LDs.

There were four main criteria on which the luminaires were judged, the first being a good dimming system and the second being accurate shutters which were equally as important.

Colour mixing was also critical, and the ESPRITE scored consistently well with all their LD consultants who were additionally impressed with the range of tuneable whites and the excellent flesh tones produced by the high-quality, high CRI output.

Last but not least ... was silent running!

Products used:

27× ESPRITE®







Hungarian State Opera House

The Hungarian State Opera House, also known as the Budapest Opera House, is a beautiful historic building located in the heart of Budapest, Hungary, and considered one of the most important and prestigious cultural institutions in the country. It is also known for its high-quality productions of opera, ballet, and classical music.

The Opera House has recently invested in four RoboSpot systems with FORTE and ESPRITE fixtures, alongside 24x Tetra2s.

The building was designed by Hungarian architect Miklós Ybl and completed in 1884, during the height of Hungary's 'Golden Age'. It features an impressive

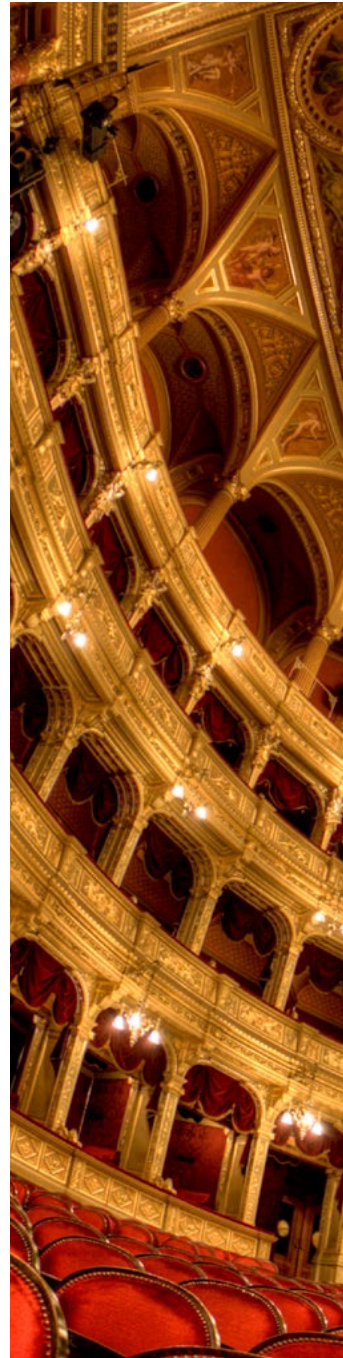
neo-Renaissance façade and a grand interior decorated with frescoes, sculptures, and ornate chandeliers.

The venue has staged many notable performances throughout its history, including works by famous Hungarian composers like Béla Bartók and Zoltán Kodály. It has also been the venue for several world premieres, including the first performances of Erkel's *Bánk bán* and Bartók's *Bluebeard's Castle*.

Today, the Hungarian State Opera House is still a beloved institution and a popular destination for tourists visiting Budapest.

Products used:

- 4x RoboSpot systems with FORTE and ESPRITE fixtures
- 24x Tetra2™





Vienna State Opera

The world-renowned Vienna State Opera House in Austria – also home to the Vienna State Ballet – invested in new Robe FORTE HCF LED moving lights and FORTE HCF FollowSpots, selecting the high CRI LED engine option for these powerful fixtures which utilize Robe's unique TE (TRANSFERABLE ENGINE) technology.

With a throw distance of 50 metres to the stage from the FOH positions, they needed the most powerful and the quietest fixtures, so 10× FORTE HCF luminaires were purchased plus 4× FORTE HCF FollowSpots, which work in conjunction with a customised RoboSpot control system.

TE is a powerful, intelligent and eco-friendly lighting solution enabling different engines – high powered, high CRI, 'tungsten', etc. – to be used in the same fixtures.

The Opera House has a busy repertory schedule, and these Robe luminaires replace the old manual-focus generic FOH tungsten fixtures with brighter, more adaptable, and more sustainable lights in this impressive 1,709 seat and 567 standing capacity Renaissance Revival-styled venue which first opened in 1869.

Products used:

10× FORTE HCF Luminaire
3× FORTE HCF FollowSpot



Act 3

PERFORMANCE SPACES

Resorts World Las Vegas	116
Kaufmann Center For Performing Arts	120
Kampnagel Hamburg	122
Skive Kulturcenter	124
MECC MacKay	126
Cankarjev dom	128

“We all need light in our lives because it is ethereal and invigorating. In a performance setting it can be really transcendent and have a deep impact on people’s emotions ... and a resonance with them.”

– Rachel Marlow, Lighting Designer, Light Artist



Resorts World Las Vegas

American country music singer and songwriter Luke Bryan wanted to make a spectacularly BIG impact for his first Las Vegas residency shows at the Resorts World Theatre, so he hired show designer / director Brian Burke and lighting / set designer Tom Sutherland from DX7 Design to work their visual magic on his much-anticipated performances.

As the show design started to evolve, Tom and his team were delighted to discover that the house lighting rig at the brand-new 5,500 capacity Resorts World Theatre venue ... features large quantities of Robe moving lights, all of which were supplied by Solotech, who completed the install and also co-ordinate the venue's on-going technical services.

Tom lost no time in getting 108x Robe MegaPointes on the lighting plot for his main effects lights, together with 54x Tarrantulas – Robe's largest LED wash beam – and 17x BMFL WashBeams which are all running on the theatre's four RoboSpot systems.

All these fixtures were just what Tom needed to develop the “full throttle” rock ‘n’ roll show he envisioned to stun and WOW audiences and present Luke Bryan to his fans, in the process taking country music productions to a new level of excitement and drama.

Products used:

108x MegaPointe™
54x Tarrantula™
17x BMFL WashBeam™
4x RoboSpot™
FollowSpot systems





BRILL



LIANIT



Kaufmann Center For Performing Arts

Lighting designer Dav Bettenhausen of design firm Lankford Fendler + Associates redesigned the exterior lighting experience for one of the world's most recognizable concert halls, The Kauffman Center for the Performing Arts in Kansas, USA.

Designed by architect Moshe Safdie, this venue is home to the Kansas City Ballet, Lyric Opera of Kansas City and Kansas City Symphony and a cultural cornerstone delivering extraordinary and diverse performing arts experiences.

Wanting to update their exterior lighting design to better illuminate and accentuate the classic architecture, the Kauffman Center worked with Lankford Fendler + Associates who created a new lighting

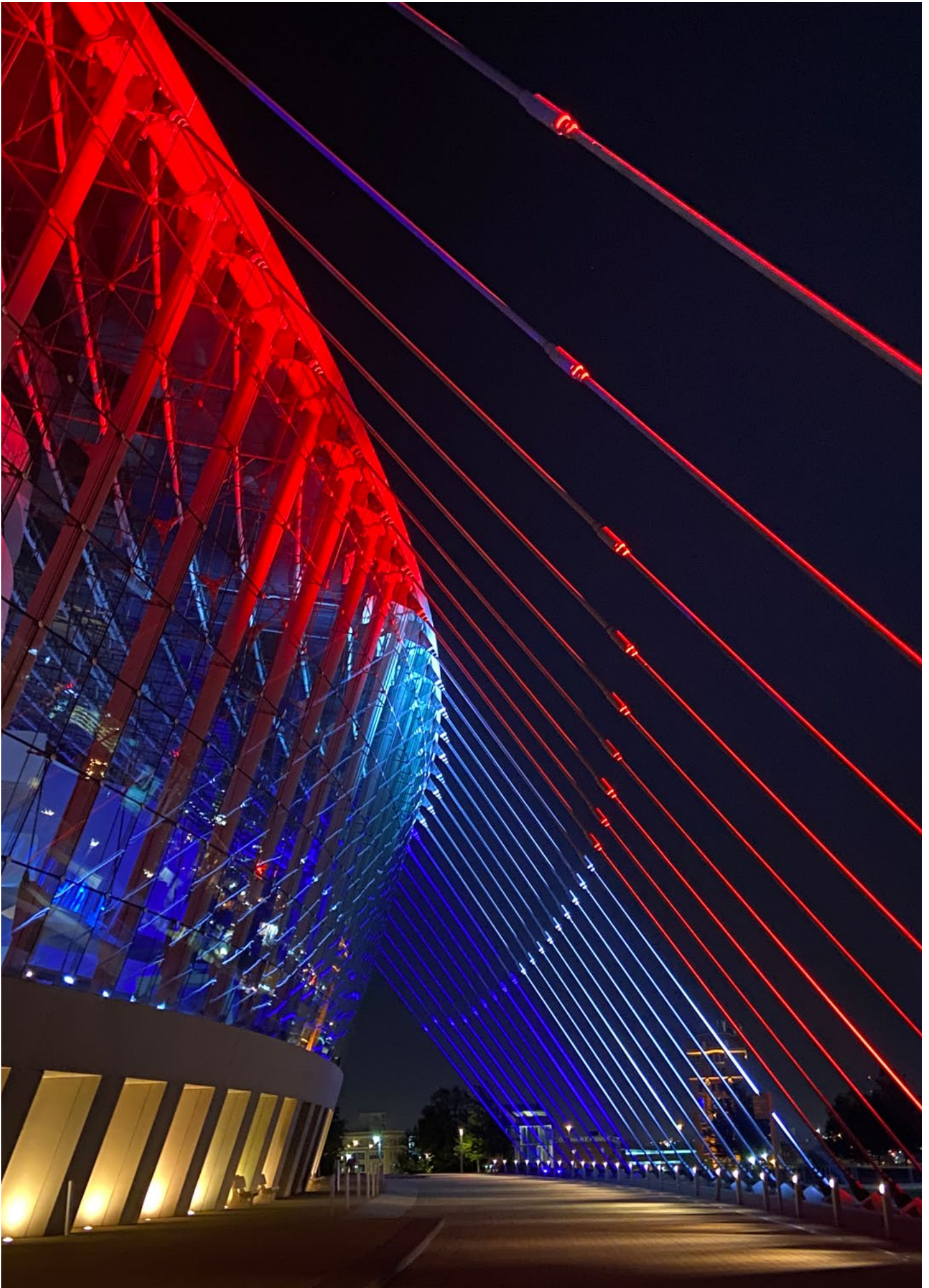
design using Anolis Divine and ArcSource LED luminaires supplied by Premier Lighting and Controls.

The Kauffman Center is an iconic part of the community and a world-renowned Cultural Arts institution, so the design brief was really quite simple – they wanted to replace old ceramic metal halide fixtures with an LED colour-changing solution that could match the existing colour temperature and light distribution retaining the 'classic' look of the original design.

Architecturally speaking, the interplay of concrete and reflective metal building materials is something unique, so those differences needed highlighting with an even and uniform lighting approach.

Products used:

Anolis Divine™ 72
Anolis ArcSource™ 96
Integrals



Kampnagel Hamburg

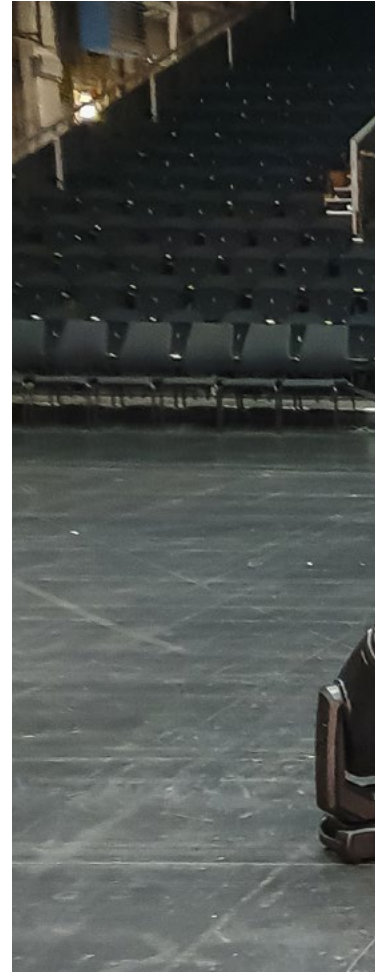
Hamburg's world-renowned Kampnagel is Germany's biggest independent international production venue for the performing arts.

Based in a former crane engineering factory in the lively Winterhude district of Hamburg, this charismatic space dates to 1865 and has been reinvented by Kampnagel as a buzzing multi-venue creative and cultural hub hosting and producing theatre, music, dance, arts festivals, and concerts since 1982.

In 2021, Kampnagel invested in Robe T1 Profile LED moving lights to be used as required across their six main performance spaces.

The T1s were selected after careful consideration, a shootout with some competitor products and a strong recommendation by Freddy Niß from lighting design and technical consultancy, FredUp e.K.

Kampnagel's artistic director Amelie Deuflhard approached Freddy to advise on the best choice of a contemporary moving light. They had a specific budget and ideally wanted 10 fixtures that were flexible enough to work across all performance genres and satisfy their diverse needs and range of lighting specs received from incoming productions.



Products used:

10x T1 Profile™



Skive Kulturcenter

Skive Kulturcenter (Cultural Centre) makes a stunning contemporary architectural statement and is a vibrant multipurpose entertainment hub in the city of Skive, that serves all the Jutland region with music, films, arts, and sports activities. Its main Concert Hall which stages international gigs and events accommodates 1,200 (seated) and 1,800 (standing).

The complex also has three handball arenas, a swimming centre, a gym and a cinema hall for movies, and the Skive Theatre, a separate venue in the city, is also run by the same team.

The Kulturcenter is known for its state-of-the-art production facilities, and the complete building was further refurbished during the pandemic, including an investment in Robe moving lights which were integral to this project and saw the purchase of 10× T2 Profiles, 12× Tarrantula LED wash beams and 12× LEDBeam 350 FWs, all for the Concert Hall.

The fixtures were specified by technical production manager for concerts, Anders Holm, and delivered by Robe's Danish distributor, Light Partner.

The lighting upgrade was designed to offer a fully flexible, modern rig that would work

for any show without having to rent in additional overhead, explained Anders.

When assessing their options for the best luminaires, they already had experience with Robe with some LEDBeam 150s acquired for Skive Theatre with which they were very pleased, so much so that they wanted to continue with the brand for which they also enjoyed great service from Light Partner.

“We wanted lights that were new, powerful, relevant and reliable that would last us for at least 5 or 6 years ahead,” noted Anders. A mothergrid above the stage has a standard trim height of 8 metres, but it can fly out to 10 metres.

The Tarrantulas arrived first and were a big hit with lighting designers at the end of 2021, and as the Concert Hall started cautiously reopening in line with the Covid restrictions at that time.

The T2 Profiles joined them at the start of this year, followed by the LEDBeam 350 FWs for the Spring, just as things started properly ramping up to the very hectic schedules of the moment which include staging current shows as well as those cancelled during the pandemic ... as everyone is so eager to get back to the live

Products used:

- 10× T2 Profile™
- 12× Tarrantula™
- 12× LEDBeam 350™

performance!

The LEDBeam 350s are used for front lighting – hence choosing the FW version which offers a Fresnel-Wash type of beam for smoother edges and better colour homogenisation. With that, the big zoom and the excellent whites, they are ideal for the task!

The T2 Profiles are on the back and mid trusses for upstage lighting and effects. “The output is fantastic, and it has all the features we wanted including good shuttering. It was a perfect choice for this house!” stated Anders.

The Tarrantulas are also on the mid stage trusses positioned for optimal stage coverage. They wanted an LED wash light with a big front lens look and efficient RGBW colour mixing.

Anders is impressed with the continuity in colour matching between all the Robe fixture types.

Touring shows and LDs are loving the new lighting and currently there are at least 2 or 3 shows a week using the system, anything from a wide variety of different music concerts to interviews, debates, and chat show style discussions.



MECC MacKay

Mackay Entertainment and Conference Centre (MECC) is a busy and diverse complex of nine different venue and event spaces in Mackay, Central Queensland, Australia, hosting a lively mix of corporate launches and conferences to opera, music, dance, and performance shows.

Head of lighting Dan Grace and his team were delighted to be amongst the first in Australia to get Robe's new high-power FORTE LED luminaires in the house, with a purchase of twelve plus twelve new Robe Spiider LED wash beams, with more of both types of moving light to follow!

The decision to buy FORTES was underlined by MECC's previous experiences with

Robe – with nearly 100 fixtures already, including 30x DL7s, a mix of profiles and fresnels, which directly replaced 36 hot and power-hungry 2K fresnels in the main theatre in 2019.

The last batch of these DL7s arrived together with three RoboSpot systems and BMFL FollowSpots, a move that was driven by MECC's head of AV, Mark Blake.

Mark and Dan are part of an MECC technical team of 18. They were both instrumental in persuading the local government officials who oversee MECC's operation that the time was right to convert the theatre to a full LED stage lighting rig.

Products used:

DL7S Profile™
FORTE®
RoboSpot™
BMFL™ FollowSpot



Cankarjev dom

Cankarjev dom, also known as the Cultural and Congress Centre of Ljubljana, is a prominent cultural institution in Ljubljana, Slovenia, named after Slovene writer Ivan Cankar, one of the most important figures in Slovene literature.

The institution was officially opened in 1982 and the building was designed by the Slovene architects Edvard Ravnikar, Marko Mušič, and Peter Gabrijelčič. It is situated in the heart of Ljubljana, near the Tivoli Park and the Slovene National Theatre.

The centre consists of several halls and venues to accommodate a diversity of performances and events.

The largest hall is the Gallus Hall, which can seat up to 2,000 people and is primarily used for concerts, theatre performances, and conferences. The Linhart Hall is also high profile and often utilized for

smaller-scale events, including chamber music concerts and lectures. Cankarjev dom houses various exhibition spaces, including the CD Gallery and the Small Gallery, which showcase contemporary art and photography.

Cankarjev dom's various venue lighting rigs all make use of Robe luminaires.

Site-wide there's quite a selection of fixtures including BMFLs, Spiiders, Viva CMYs, LEDBeam 100s, LEDWash 600s, CycFX 8s and 600 E Spots. SPOTEs were purchased just after the pandemic for the Klub area – a second-floor multipurpose function room that includes a roof terrace with excellent views over the city.

There are even some quality antiques like ColorSpot 575 XTs, which were the first Robe products in the house in 2003! With this fantastic return-on-investment, these

are still going and used occasionally, along with 50× ColorMix 250s initially purchased to wash the rear curtains for a TV show.

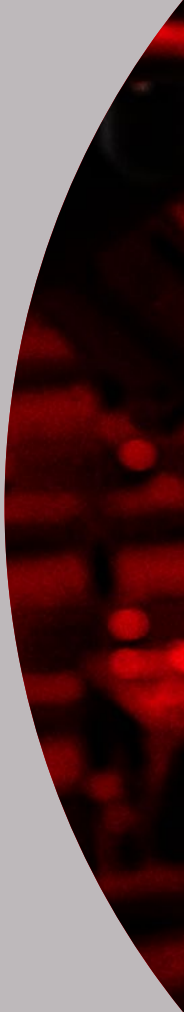
In an average year, Cankarjev dom produces and stages nearly 1,100 cultural events, plus over 200 private events, conferences, etc. After the pandemic, the schedules have been exceptionally busy and the centre has bookings through 2024 and beyond!

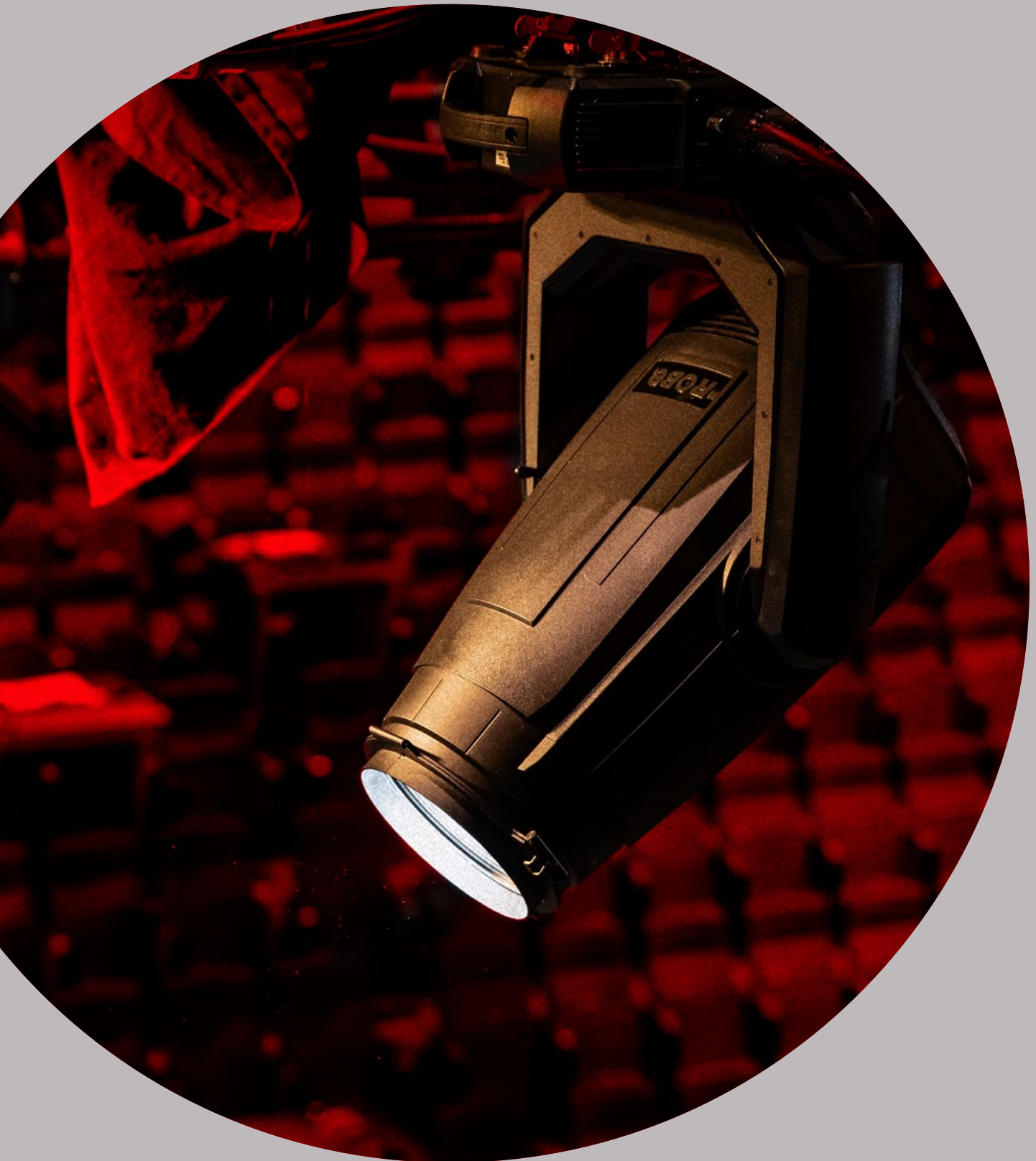
Besides its cultural activities, it also plays an essential role in hosting international conferences and congresses including business meetings, academic conferences, and symposiums.





OUR SHINING STARS







T1 Profile™



With maximised colour palette from the MSL Multi-spectral LED engine, the T1 Profile operates happily in noise-sensitive environments, generating the finest light quality for absolute colour rendition over short to medium throw distances.

T2™ Profile



Throwing multispectral light quality over greater distances, the T2 Profile ensures the precision, colour rendition, quietness and optical performance of the T Series are maintained, regardless of throw distance.

T2™ Fresnel



Linear CCT control and automatic maximum gamut coverage from the MSL Multispectral LED engine produce everything from the most subtle pastels to the brashest saturated colours. This fixture gives classic Fresnel wash coverage with superior beam control.

T11 Profile™



An incredible, integral, single 5-50° SuperZoom with a quick-change front lens, a variety of modes, self-contained frost and the T Series Multispectral TRANSFERABLE ENGINE giving T Series colour consistency, makes this fixture the most advanced, sort after, manual profile available.

T11™ PC



Based on the T11 Profile and its fast lens change capability, the PC version delivers a soft-edged beam capable of zooming from 5-60°. Shutter blades act as internal barn doors to shape the beam while removing the risk of them being bumped by locking them in place.

FORTE®



With a piercing 50,000 lumen output and sleek form-factor, the feature-rich FORTE provides the ultimate high power, wide zoom ranging, long throw theatrical fixture. TRANSFERABLE ENGINE technology gives task specific white LED source solutions whatever your needs.

ESPRITE®



With class-leading output-to-weight ratio, high-definition optics, and future proof TRANSFERABLE ENGINE technology, including LED source options, it features the most advanced CMY colour mixing system available for the smoothest colour transitions.

ESPRITE® Fresnel



Delivering a classic soft-edged beam, the ESPRITE Fresnel contains advanced beam control features, including a four-way rotatable and individually controlled internal barn door system. The unique rotating scrim enables the removal of unsightly hotspots.



PAINTE®



Packed with features, the compact PAINTE delivers performance way beyond its size. With advanced 'full curtain' shutters, uncompromising ultra smooth CMY colour mixing and superb beam quality, it generates maximum visual impact whatever the application.

LEDBeam 150™ FWQ



Specifically dampened for noise-sensitive environments, this multisource RGBW fixture offers a Fresnel Wash-like beam with smooth edges and even better colour homogenisation. Super-fast, it has a spectacular 3.8-60° zoom for maximum flexibility.

LEDBeam 350™



A true wash beam workhorse, it delivers high-lumen output, without the complications of pixel mapping for effortless wash and beam work. With noise-dampening engineering, an optional FW-Fresnel Wash lens softens the beam edges for stunning results.

Spiider®



A full pixel mappable wash beam with exceptionally well-homogenised output, Spiider features a unique Multicolour Flower Effect, a built-in effects engine and a wide variety of protocols to add even more visual splendour to a stage or space.

Tarrantula[®]



The long-throw version of the incredibly successful Spiider. Fully pixel mappable with an exceptionally well homogenised output, Multicolour Flower Effects, built-in effects engine and a wide variety of protocols and accessories, including eggcrates and beam shapers.

Spiikie[®]+



Compact, lightweight, and punchy, with an RGBW LED source, this fast-moving beam light features a 4-28° zoom, continuous pan and tilt movement, and Multi-Coloured Flower effects, together with a 3-Facet prism to give unlimited impactful effects.

MegaPointe[®]



Mega bright! Multi-level stackable prisms with rotating framing shutter emulation, fast and smooth CMY colour mixing, a wide-ranging zoom and a sleek form factor make MegaPointe an industry legend for its speed and for creating mesmerising effects.

TETRA[®] 1 and 2



With a highly defined 4° “sheet of light” requested by lighting designers, zooming out to 45° washes, super-fast tilt movement and consistent pixel spacing for multi-fixture lines, TETRA is quick to set up and operate with pass-through data and power connections.



PARFECT 150™



Having consistent colour-mixing with all multisource LED fixtures, the punchy ParFect 150 features a motorised zoom and is also available in an RGBA version for those requiring a higher colour rendition ability.

iPARFECT 150™



IP65-rated for temporary or permanent installation indoors or out, this fan-less multisource Par is ideal for quiet performance spaces. Sealed optics mean low maintenance, with the motorised zoom covering all scenarios offering total location flexibility.

RoboSpot™



As the industry standard remote-controlled Follow Spot system, RoboSpot allows fully flexible control from one to twelve fixtures that can be positioned anywhere in the rig. It provides a safer working environment for operators, removes the need for seat kills and eliminates audience distraction over talkback, etc.

LightMaster™



A range of externally mounted programmable follow spot handles with a control panel and two individual faders, allowing Robe fixtures to become manually controlled follow spots. Both rear and side-mounted versions are available.

BMFL™ WashBeam BMFL™ FollowSpot



Using the strength of this classic high-powered family of luminaires, there is never a shortage of brightness! This discharge-lamped BMFL WashBeam is the ultimate version – a single high-output, hugely adaptable package capable of anything from subtle theatrical precision to intense touring visuals.

Created specifically for the ground-breaking RoboSpot system, this fixture comes prewired for installing its digital camera on the head. For manual operation, it can be fitted with the manually operated LightMaster handles.

Legacy Products

MMX
CityScape Extreme™
DL7S Profile™Viva™ CMY
LEDWash 600™
LEDWash 800™
LEDWash 1200™
Spiikie™

“I’ve often called the lighting for the stage the “music for the eye”, because it has the same way of making an atmosphere, making a landscape, changing fluidly from one place to another without seeming effort.”

– Jennifer Tipton





Beyond The Footlights

Inspired by the power, emotion
and expression of creative lighting

Written & Edited

Louise Stickland

Content co-ordinated

Alex Howes

Theatre expertise & consultation

Dave Whitehouse

Graphics, composition

KNOW HOW solutions s.r.o.

Issue

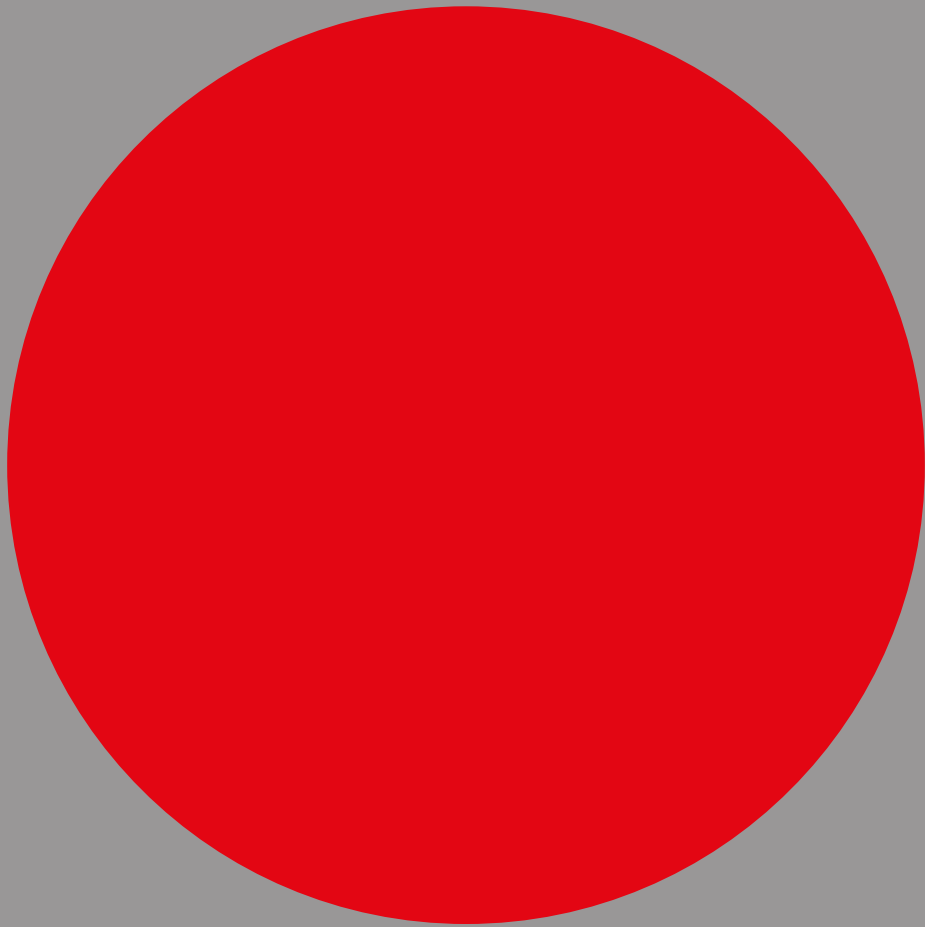
EN 06/2023

www.robe.cz

© June 2023 ROBE lighting s.r.o

All specifications subject to change
without notice.

ROBE[®]





ROBE[®]

ROBE lighting s.r.o
www.robe.cz

Hazovice 2090, 75661
Roznov pod Radhostem, Czech Republic