

ROBE®

2017

**S
M
E
N**

VOL. 1



pixelPATT™



BMFL™ FollowSpot



VIVA™ CMY



LEDBeam 150™

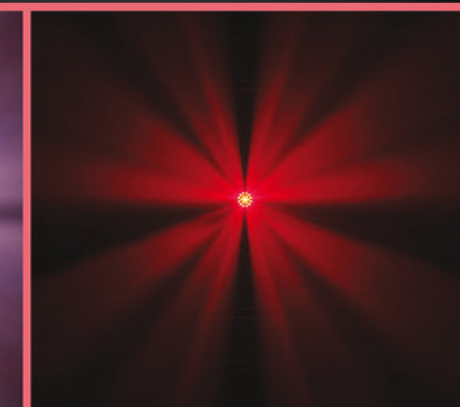
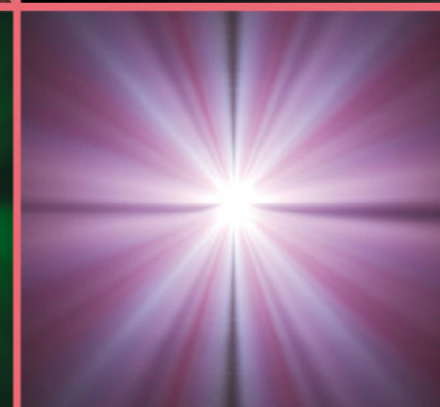
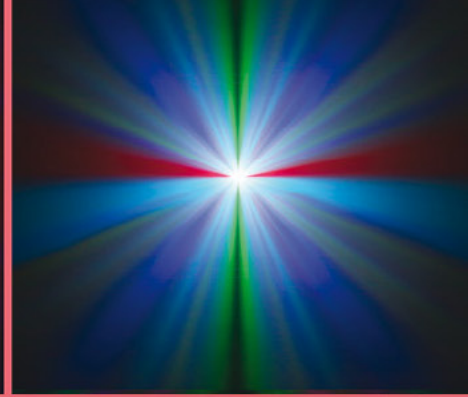
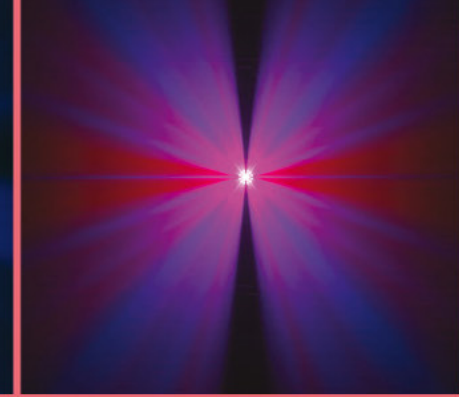
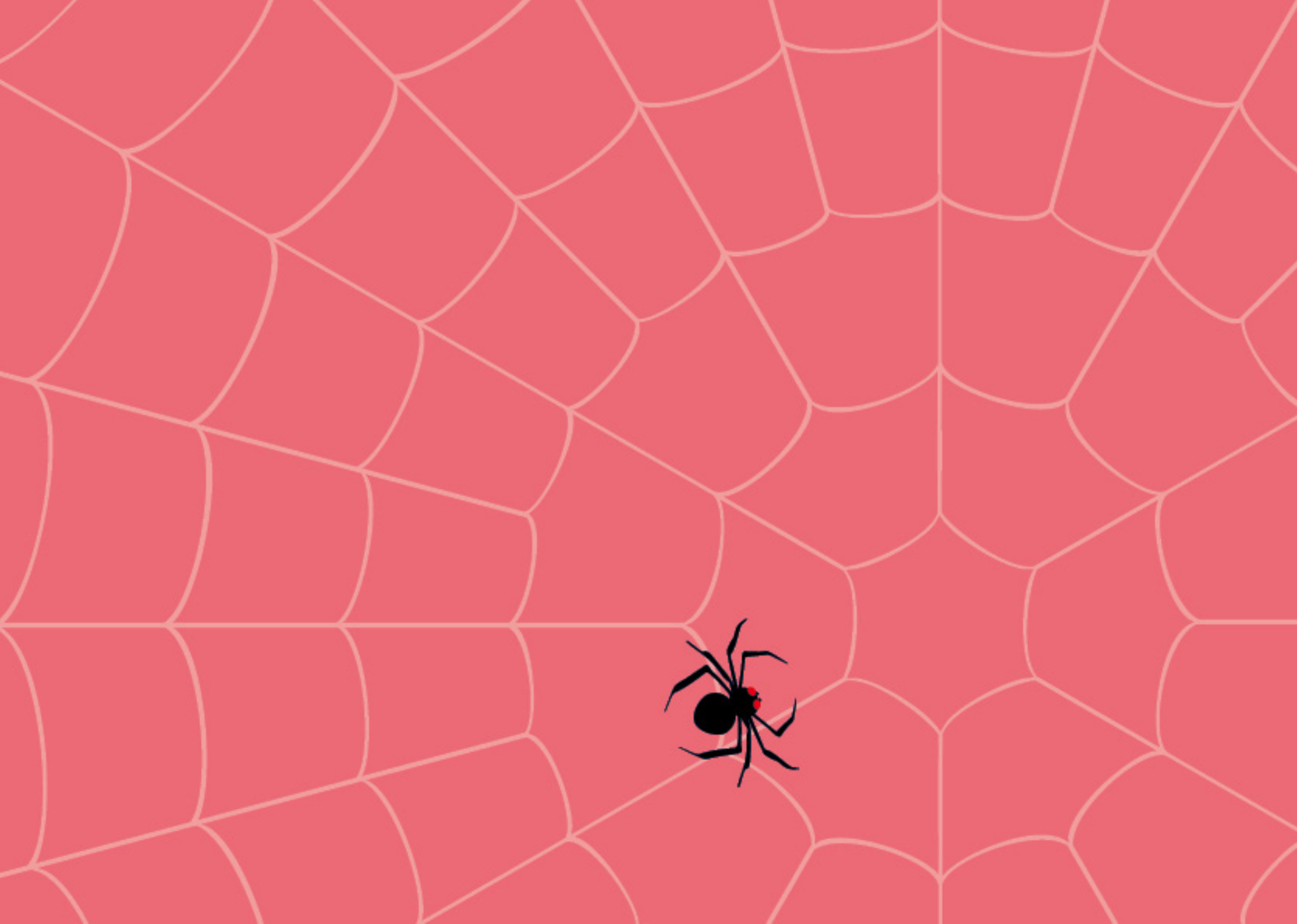


ParFect 150™



UV Strobe™







THE NEXT BIG THING FROM ROBE !

Spiider, a superbright next generation of LED WashBeam luminaires, using 18x 30 Watt and 1x 60 Watt LEDs and combining it with a very efficient 12:1 zoom optical system ranging from tight 4° Beam to wide 50° Wash, makes the product the most powerful LED fixture on the market.

Beautiful convergence of hard edge in-air effects, punchy beams and smooth homogenized wash is all encapsulated in the unique Spiider.

Rich colors of 19 powerfull RGBW LEDs can create charming wash light with velvety smooth transitions thanks to internal 18bit LED dimming system.

Dynamic video effects are easily achieved by mapping individual pixels and controlled by DMX desk or media servers via sACN with internal HTP merging, DMX or by Kling-Net protocol.

Unique central piece with Robe exclusive Flower Effect is driven by 60W RGBW LED multichip for new innovative sharp multicoloured spikes of light, rotating in both directions at variable speed, adding another new visual effect to the show.



Technical Specification

- Light source type: 1x 60W RGBW and 18 x 30W RGBW LED multichips
- LED life expectancy: min. 20.000 hours
- Typical lumen maintenance: 70% @ 20.000 hours
- Robe's proprietary optical design
- High - efficiency zoom optical system, ratio 12,5 : 1
- Zoom range: 4° - 50°
- Fixture total lumen output: 11.000 lm
- Light output: 50.100 lx @ 5m
- Colour mixing mode RGBW or CMY
- Individual control of each RGBW pixel
- Variable CTO: 2.700K - 8.000K
- Virtual Colour Wheel: with 66 preset swatches
- Tungsten lamp effect at whites: 2.700 K and 3.200 K (red shift and thermal delay)
- Colour rainbow effect with variable speed
- Pre-programmed pixel effects with colour, dimming and strobe chases, waves and pulses at variable speed and direction
- Innovative Flower Effect: rotating in both directions at variable speed (Patent pending)
- Strobe effect: variable speed (max.20 flashes per second)
- Pre-programmed random strobe & pulse effects
- High resolution electronic dimming: 0 - 100%
- Setting & Addressing: ROBE Navigation System 2 (RNS2)
- Display: QVGA Robe touch screen with battery backup, gravitation sensor for auto screen positioning, operation memory service log with RTC, stand-alone operation with 3 editable programs (each up to 100 steps), built-in analyser for easy fault finding
- Protocols: USITT DMX-512, RDM, Art-Net, MA Net, MA Net2, sACN, Kling-Net
- Wireless CRMX™ technology from Lumen Radio (on request)
- DMX Protocol modes: 10
- Control channels: 49, 27, 33, 90, 27, 46, 91, 110, 103, 122
- Dimmer: 8 or 16 bit (internal 18 bit)
- Pan movement: 540°
- Tilt movement: 230°
- EMS™: Electronic Motion Stabilizer system for Pan & Tilt reducing beam deviation caused by truss movement or vibration (Patent pending)
- Automatic Pan/Tilt position correction
- Power consumption: max. 600W
- Power in connector: Neutric powerCON TRUE1
- DMX and RDM data in/out : Locking 3-pin & 5-pin XLR
- Ethernet port in/out: RJ45
- Embedded Ethernet switch 10/100 Mbps: 1 x in/ 1 x out
- Weight: 13,3kg (29.2 lbs)
- Rigging: Horizontal or vertical mounting positions; Universal operating position, Mounting points with 2 pairs of 1/4-turn locking points; 2x Omega adaptors with 1/4-turn quick locks, Safety cable attachment point, Tilt transport lock
- Accessories: EggCrate, Doughty Trigger Clamp, Safety wire 35 kg, Single Top Loader Case, Dual Top Loader Case, Quad Top Loader Case, Foam Shell
- Legal: Spiider® is a registered trademark of Robe lighting s.r.o. Spiider® is patented by Robe lighting s.r.o. and is protected by one or more pending or issued patents





Powerfully smooth, Robe's VIVA CMY combines brightness of exceptionally clear zero-fringing white beam together with continuous color transitions of CMY mixing.

Elegant and lightweight, packed with smart effects that are easy to use. The fixture is very powerful yet consumes little energy.

The 350W white LED light engine gives an extra punchy beam with even flat field and an incredible 20.000 hours of operation – in fact, no relamping will be needed for the entire life of the fixture!

Smooth color transition and fixed vivid and radiant colours can be applied from CMY mixing system and colour wheel, and rotating or static gobos added for projections or mid-air effects. The smooth zoom can go out to 40 degrees at its widest and be softened it up with variable frost to create a gentle wash-like output or dynamic background projections.

The minimum 9° zoom produces a piercing beam that can be trimmed with ultra-fast stepless iris for really punchy output, and VIVA has extremely fast pan/tilt movement using Robe's proprietary EMS™ (Electronic Motion Stabiliser) technology.

That and much more is possible with VIVA – entertaining and contemporary!

Technical Specification

- Light source type: 350 W White LED engine
- LED life expectancy: min. 20 000 hours
- Colour Temperature: 6.500 K
- Typical lumen maintenance: 70% @ 20.000 hours
- Light source warranty: 3 years or 20.000 hours
- Robe's proprietary optical design
- High - efficiency zoom optical system, ratio 4,5 : 1
- Zoom range: 9° - 40°
- Output lens diameter: 120 mm
- Even flat field, 2:1 hotspot
- Fixture total lumen output: 9.660 lm
- Light output: 23.100 lx @ 5m
- Colour Wheel: 6 fixed dichroic colours + white
- Virtual Colour Wheel: with 66 preset swatches
- Rotating gobo wheel: 7 rotating, indexable, replaceable „SLOT&LOCK" glass gobos + open
- Static gobo wheel: 9 aluminium gobos + open
- Prism: 3-facet circular rotating prism
- Iris: Motorized, stepless, pulse effects up to 3 Hz
- Frost: Variable, replaceable 20° frost filter; optional 1°, 10° and 30°
- Motorized zoom and focus
- Shutter: Electronic with variable speed strobe (max.20 flashes per second)
- Pre-programmed random strobe & pulse effects
- Setting & Addressing: ROBE Navigation System 2 (RNS2)



- Display: QVGA Robe touch screen with battery backup, gravitation sensor for auto screen positioning, operation memory service log with RTC, stand-alone operation with 3 editable programs (each up to 100 steps), built-in analyser for easy fault finding
- Protocols: USITT DMX-512, RDM, ArtNet, MA Net, MA Net2, sACN
- Wireless CRMX™ technology from Lumen Radio (on request)
- DMX Protocol modes: 2
- Control channels: 32, 26
- Dimmer: 8 or 16 bit (internal 18 bit)
- Pan movement: 540°
- Tilt movement: 270°
- EMS™: Electronic Motion Stabilizer system for Pan & Tilt reducing beam deviation caused by truss movement or vibration (Patent pending)
- Power consumption: 400 W at 230 V / 50 Hz
- Power in connector: Neutric powerCON TRUE1
- DMX and RDM data in/out : Locking 3-pin & 5-pin XLR
- Ethernet port in: RJ45
- Weight: 19 kg (41.9 lbs)
- Rigging: Horizontal or vertical mounting position, Universal operating position,
- Mounting points with 2 pairs of 1/4-turn locking points, 2x Omega adaptors with 1/4-turn quick locks, Pan and Tilt transport locks
- Accessories: Frost 1° (exchange) assembled; Frost 10° (exchange) assembled; Frost 30° (exchange) assembled; Doughty Trigger Clamp; Safety wire 35 kg; Single Top Loader Case; Dual Top Loader Case; Quad Top Loader Case; Foam Shell
- Legal:

Viva™ is a trademark of Robe lighting s.r.o.

Viva™ CMY is patented by Robe lighting s.r.o. and is protected by one or more pending or issued patents





Created specifically for follow-spot operation, this custom modified version of BMFL comes with specific features to provide both motorised movement and manual operation with follow-spot handles.

Based on the powerful BMFL WashBeam it blasts beams of extra bright output and has an abundance of great features.

The BMFL FollowSpot takes advantage of its wide 160 mm front lens and a high CRI 1700W lamp. With a custom light source designed for Robe it produces an astounding 250.000 lux at 5 metres and has a wide zoom range of 5° to 55° with precise focusing.

Manually or remotely controllable features include smooth color mixing and CTO flags, two color wheels, multiple variable frost filters, focus, zoom and quick pulsing iris. Follow-spot operation can be greatly extended by using LightMaster handles - an optional accessory.

The BMFL FollowSpot is pre-wired for installation of the digital camera on the head and is connected with the new RoboSpot base station for off-stage follow-spot operation...

Technical Specification

- Light source type: Compact short-arc metal halide lamp
- Approved model: OSRAM Lok-it! HTI 1700/PS
- Lifetime: 750 hours @ 1700 W / 1500 W / Quiet mode
- CRI 92+
- Colour temperature: 6.000K
- Robe's proprietary optical design
- High - efficiency zoom optical system, ratio 11:1
- Zoom range: 5° - 55°
- Output lens diameter: 160 mm
- Dichroic glass reflector for maximising the light efficiency
- High efficient component optics
- Fixture total lumen output:
40.000 lm @ 1700 W
36.500 lm @ 1500 W
32.000 lm @ 1200 W (Quiet mode)
- Variable CTO: 2.700 - 6.000 K
- Colour Wheel 1: 6 fixed dichroic colours: deep red, deep blue, orange, green, magenta, congo blue + white
- Colour Wheel 2: 6 replaceable „SLOT&LOCK“ dichroic colours: pink, lavender, laser green, 9000 K CTB, minus half and minus green + white
- Iris: Motorized, stepless, pulse effects up to 3 Hz
- Frost: Variable Light (1°), Medium plus replaceable Heavy (two another frosts included)
- Shutter: Separate dual blade system, variable strobe effect up to 10 Hz, full black out
- Dimmer: Optimized dual blade system for exceptional smooth dimming
- Setting & Addressing: ROBE Navigation System 2 (RNS2)
- Display: QVGA Robe touch screen with battery backup, gravitation sensor for auto screen positioning, operation memory service log with RTC, stand-alone operation with

3 editable programs (each up to 100 steps), built-in analyser for easy fault finding

- Protocols: USITT DMX-512, RDM, ArtNet, MA Net, MA Net2, sACN
- Wireless CRMX™ technology from Lumen Radio (on request)
- DMX Protocol modes: 2
- Control channels: 32, 26
- Pan movement: 540°
- Tilt movement: 270°
- EMS™: Electronic Motion Stabilizer system for Pan & Tilt reducing beam deviation caused by truss movement or vibration (Patent pending)
- Automatic Pan/Tilt position correction
- Power consumption: 2000 W at 230 V / 50 Hz
- Power in connector: Neutrik powerCON
- DMX and RDM data in/out: Locking 3-pin & 5-pin XLR
- Ethernet port in: RJ45
- Weight: 38.4 kg (84.7 lbs)
- Rigging: Mounting positions: 0°, 32°, 90°; Universal operating position; Mounting points with 5 pairs of 1/4-turn locking points; 2x Omega adaptors with 1/4 - turn quick locks; Safety cable attachment point; Pan and Tilt transport locks
- Accessories: Lamp Osram Lok-it HTI 1700/PS, BMFL FollowSpot Handles - 2 pcs in box, Doughty Trigger Clamp, Safety wire 50 kg, Single Top Loader Case, Dual Top Loader Case, Foam Shell
- Legal:
BMFL™ is a trademark of Robe lighting s.r.o.
BMFL™ FollowSpot is patented by Robe lighting s.r.o. and is protected by one or more pending or issued patents

BROADCAST



THEATRE



FILM



LIVE





In situations, where the followspot operator cannot be placed directly at the controlled fixture, RoboSpot - the remote follow-spot system can remotely control any Robin BMFL fixtures you already have on site.

The RoboSpot system utilizes an external camera to follow the performer and can control up to twelve BMFL fixtures mounted in different locations around the stage.

RoboSpot base station features a video screen for the operator to observe live, first-person-view from fixture-mounted camera or from dedicated pan/tilt enabled RoboSpot Camera unit. The RoboSpot base station then allows the operator to use handles with two programmable faders (mapped for example to dimmer and iris) and the operator's movement of the handles is computed and transferred via DMX as control signal for pan and tilt movement of the controlled units.

Panel with touch screen display and with four custom programmable jog-wheels plus ten assignable buttons offers a fully-customizeable user experience. The programmable buttons, faders and jog-wheels allow the operator to comfortably trigger and control dimmer, focus, iris, colors and the other many features of the units being controlled. While in use by follow-spot operator, remote desk can still take control of all the internal features of the unit (like dimmer, colors etc.). Multiple fixtures (up to twelve) can be controlled at the same time from a single RoboSpot base station.

RoboSpot Camera is a dedicated camera-based unit with DMX remotely-controllable focus, zoom and with precise pan/tilt movement. It provides a first-person-view for the follow-spot operator. Video signal of the internal camera is transferred in real time to the RoboSpot based unit via Ethernet.

Technical Specification

- 15.6" monitor
- QVGA Robe touch screen with battery backup
- 4 control jog-wheels
- 10 preset buttons with a direct access of the pre-programmed features
- Activation & Blackout buttons
- Pan & Tilt freeze buttons
- Manual movement control with position indication on the screen
- 2 faders mounted on the handles with direct control of the key features 0 – 100% (for example dimmer and iris), assignable to any BMFL properties (focus, zoom, frost etc.)
- User setting of controllable attributes
- Saving and uploading of custom settings
- Multiple device control (up to 12 fixtures)
- Compatible with the ROBE BMFL Spot, Blade, WashBeam and FollowSpot models
- Input voltage range: 100-240 V, 50/60 Hz
- Power consumption: max. 25W
- Power in connector: Neutrik powerCON TRUE1
- DMX and RDM data in/out: Locking 3-pin & 5-pin XLR
- Ethernet port in/out: RJ45
- Video input: RJ45
- Height: 597 mm
- Width: 485 mm
- Depth: 485 mm
- Weight: 17.5 kg (38.6 lbs)
- Mounting positions: on tripod (supplied with the product)
- Legal:
 - RoboSpot™ is a trademark of Robe lighting s.r.o.
 - RoboSpot™ is patented by Robe lighting s.r.o.
 - and is protected by one or more pending or issued patents





BMFL LightMaster is an accessory of externally mounted programmable followspot handles with a control panel and two individual faders that allow you to create quality followspot from any of the Robin BMFL fixtures you already have on site.

Available in either sideways or back mounted option, the handles feature two programmable faders (for example for dimmer and iris) and a control panel with touch screen display and four custom programmable jog-wheels and ten assignable buttons for a fully-customizeable user experience.

The programmable buttons, jog-wheels and faders allow the operator to comfortably trigger and control dimmer, iris, focus, zoom, frost, colors or other features of the unit.

While in use by followspot operator, remote desk can still take control of all the internal features of the unit (like dimmer, colors etc.). Internal fixture's settings allow you to fully tailor pan/tilt movement behavior by adjusting tension smoothness and resistance. Quick mounting in back or side position is assured by using quarter turn lock screws. Control panel connects to the unit via USB connection.



Technical Specification

Control Pannel

- QVGA Robe touch screen with battery backup
- 4 control jog-wheels
- 10 preset buttons with a direct access of the pre-programmed features
- Activation & Blackout buttons
- Pan & Tilt freeze buttons
- Manual movement control with position indication on the screen
- User setting of controllable attributes
- Saving and uploading of custom settings
- Compatible with the ROBE BMFL Spot, Blade, WashBeam and FollowSpot models
- Power and data in connector: USB
- Ethernet port in/out: RJ45

Programmable Faders

- 2 faders mounted on the handles
- Direct control of the key features 0 – 100% (for example dimmer and iris)
- Assignable to any BMFL attributes (focus, zoom, frost etc.)

Handles

- Sideways mounted handles (right or left)
- Back mounted handles
- Mounting option: on the ROBE BMFL Spot, Blade, WashBeam and FollowSpot models

LightMaster side

- Height: 256 mm
- Width: 636 mm
- Depth: 490 mm
- Weight: 4 kg (8.8lbs)

LightMaster rear

- Height: 191 mm
- Width: 676 mm
- Depth: 261 mm
- Weight: 3.2 kg (7 lbs)

Legal:

BMFL™ is a trademark of Robe lighting s.r.o.
BMFL™ LightMaster is patented by Robe lighting s.r.o.
and is protected by one or more pending or issued patents



BROADCAST



THEATRE



FILM



LIVE



LEDBeam 150™



ROBIN®
Innovative Technology

The best things come in small packages, now with zoom included. ROBIN® LEDBeam 150 is the answer with fast sweeping beams and a wide far-reaching quality wash in compact housing.

Attractive colorful chases and smooth transitions are powered by a cluster of high power multichip 30W RGBW LEDs.

The spectacular zoom range of 4° to 62° uses an eminent custom-designed optical system.

A highly optimized motorised control produces speedy pan and tilt movement. Besides intense strobing capabilities, the LEDBeam 150 also offers gentle 18-bit dimming, including Tungsten lamp effects.

Simplified control via pre-programmed colors on a virtual color wheel and various strobing and pulsing effects allows quick and easy programming.



Technical Specification

- Light source type: 7 x 30W RGBW multichips
- LED life expectancy: min. 20.000 hours
- Typical lumen maintenance: 70% @ 20.000 hours
- Robe's proprietary optical design
- High - efficiency zoom optical system, ratio 15,5:1
- Zoom range: 4° - 62°
- Fixture total lumen output: 2.900 lm
- Light output: 11.600lx @ 5m
- Colour mixing mode RGBW or CMY
- Variable CTO: 2.700K - 8.000K
- Virtual Colour Wheel: with 66 preset swatches
- Tungsten lamp effect at whites : 2.700 K and 3.200 K (red shift and thermal delay)
- Pre-programmed random strobe & pulse effects
- High resolution electronic dimming: 0 - 100%
- Setting & Addressing: two-row LCD display & 4 control buttons, stand-alone operation with 3 editable programs (each up to 25 steps)
- Protocols: USITT DMX-512, RDM
- Wireless CRMX™ technology from Lumen Radio (on request)
- DMX Protocol modes: 2
- Control channels: 22, 16
- Pan/Tilt resolution: 8 or 16 bit
- RGBW or CMY: 8 or 16 bit
- Zoom: 8 or 16 bit
- Dimmer: 8 or 16 bit (internal 18 bit)
- Pan movement: 450°; Tilt movement: 234°
- Power consumption: Max. 300W
- Power in/out connector: Neutrik powerCON in/out
- DMX and RDM data in/out : Locking 5-pin XLR
- Weight: 6 kg (13.2 lbs)
- Rigging: Mounting points with 1 pair of 1/4-turn locking points, 1x Omega adaptor with 1/4-turn quick locks, Universal operating position, Safety cable attachment point
- Accessories: Wireless DMX external module, EggCrate, Line cords powerCON In, Line cords powerCON In/Out, Safety Wire, Single Top Loader Case, Quad Top Loader Case, Eight-pack Top loader case
- Legal: LEDBeam 150™ is a trademark of Robe lighting s.r.o. LEDBeam 150™ is patented by Robe lighting s.r.o. and is protected by one or more pending or issued patents

Technical Specification

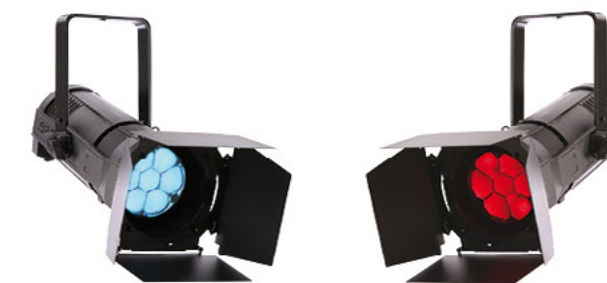
- Light source type: 7 x 30 W RGBW multichips
- LED life expectancy: min. 20.000 hours
- Typical lumen maintenance: 70% @ 20.000 hours
- Robe's proprietary optical design
- High - efficiency zoom optical system, ratio 12:1
- Zoom range: 4° - 50°
- Fixture total lumen output
- Light output
- Colour mixing mode RGBW or CMY
- Variable CTO: 2.700K - 8.000K
- Virtual Colour Wheel: with 66 preset swatches
- Tungsten lamp effect at whites : 2.700 K and 3.200 K (red shift and thermal delay)
- Pre-programmed random strobe & pulse effects
- High resolution electronic dimming: 0 - 100%
- Setting & Addressing: two-row LCD display & 4 control buttons, stand-alone operation with 3 editable programs (each up to 25 steps)
- Protocols: USITT DMX-512, RDM
- Wireless CRMX™ technology from Lumen Radio (on request)
- DMX Protocol modes: 2
- Control channels: 22, 16
- RGBW or CMY: 8 or 16 bit
- Zoom: 8 or 16 bit
- Dimmer: 8 or 16 bit (internal 18 bit)
- Power consumption: Max. 300W
- Power in/out connector: Neutrik powerCON in/out
- DMX and RDM data in/out : Locking 5-pin XLR
- Weight: 5 kg (11 lbs)
- Rigging: Mounting horizontally or vertically via mounting yoke, Universal operating position, Safety cable attachment point
- Accessories: Wireless DMX external module, Accessory frame adaptor and gel frame, Barndoor module, Line cords powerCON In, Line cords powerCON In/Out, Single Top Loader Case, Quad Top Loader Case
- Legal: ParFect 150™ is a trademark of Robe lighting s.r.o. ParFect 150™ is patented by Robe lighting s.r.o. and is protected by one or more pending or issued patents

An LED source ACL beam at an affordable price and made in Europe, now with zoom included.

ParFect 150 is a static, zoomable version of the successful LEDBeam 100 and retains all the key features including both CMY & RGBW colour control, 18-bit dimming, Tungsten emulation, selectable & variable colour temperatures and the powerful punchy beam ranging from 4° to 50°.

The compact and lightweight moulded composite unit includes a combined hanging bracket / floor stand.

Accessories such as barn-doors and the gel frame give ParFect 150 the features required for TV and theatre.



ParFect 150™



ROBIN®
Innovative Technology



Powerful strobe and super bright wash for outdoor exposures. The Strobe IP from Robe is the most sophisticated strobe-blinder effects unit on the market.

A high IP rating of 67 provides the reliability required for the most demanding projects, including permanent installations or temporary events.

Ultimately controllable, super fast bursts of high-powered pulses can be adjusted in frequency, duration and intensity, optically harnessed from the 60x High Power LED chips.

Strobe IP is easy to rig and program using direct segment control or predefined macros.

The compact size and weight of the Strobe IP combined with its adaptability make installation a smooth and streamlined process.



Technical Specification

- Light source type: 60 x High Power White LED chips
- LED life expectancy: min. 60.000 hours
- Typical lumen maintenance: 70% @ 60.000 hours
- CCT: 6.000K
- High efficient component optics
- Beam angle: 32° (1/2 beam), 60° (1/10 beam)
- 6 individually controllable LED zones
- Strobe duration: 13 - 860 ms
- Strobe rate: 0,3 - 30 Hz
- Strobe effect: Ramp up, ramp down, ramp up-down, random flash, single flash
- Individual zone strobe effect with variable speed
- High resolution electronic dimming: 0 - 100%
- Setting & Addressing: 4-segment LED display & 4 control buttons, stand-alone operation with 1 editable program up to 40 steps)
- Protocols: USITT DMX-512, RDM, ArtNet, MA Net, MA Net2, sACN
- Wireless CRMX™ technology from Lumen Radio (on request)
- DMX Protocol modes: 4
- Control channels: 8, 14, 3, 4
- Dimmer: 8 or 16 bit (internal 18 bit)
- Movement control: manual
- Power consumption: 200W at 230V / 50Hz
- AC connection: power cable with plug
- DMX and RDM data in/out : Locking 5-pin XLR IP 67
- Weight: 14.3 kg (31.5 lbs)
- IP: 67
- Rigging: Universal operating position, Removable surface mount adaptor, C-clamp adaptor
- Accessories: Top hat, Half top hat, Barndoor module, C-clamp adaptor, Surface mount adaptor
- Legal:
Strobe IP™ is a trademark of Robe lighting s.r.o.
Strobe IP™ is patented by Robe lighting s.r.o. and is protected by one or more pending or issued patents

Technical Specification

- Light source type: 60 x 15W RGBW LED multichips
- LED life expectancy: min. 40.000 hours
- Typical lumen maintenance: 70% @ 40.000 hours
- High efficient component optics
- Beam angle: 35° (at 1/2 beam), 63° (at 1/10 beam)
- Colour mixing mode RGBW or CMY
- 6 individually controllable LED zones
- Variable CTO: 2.700 - 6.000 K
- Virtual Colour Wheel
- Tungsten lamp effect at whites : 2.700 K and 3.200 K (red shift and thermal delay)
- Strobe duration: 13 - 860 ms
- Strobe rate: 0,3 - 30 Hz
- Strobe effect: Ramp up, ramp down, ramp up-down, random flash, single flash
- Individual zone strobe effect with variable speed
- High resolution electronic dimming: 0 - 100%
- Setting & Addressing: 4-segment LED display & 4 control buttons, stand-alone operation with 1 editable program up to 40 steps)
- Protocols: USITT DMX-512, RDM, ArtNet, MA Net, MA Net2, sACN
- Wireless CRMX™ technology from Lumen Radio (on request)
- DMX Protocol modes: 5
- Control channels: 9, 14, 18, 28, 84
- RGBW or CMY: 8 or 16 bit (internal 18 bit)
- Dimmer: 8 or 16 bit (internal 18 bit)
- Movement control: manual
- Power consumption: 440W at 230V / 50Hz
- AC connection: power cable with plug
- DMX and RDM data in/out : Locking 5-pin XLR IP 67
- Weight: 14.3 kg (31.5 lbs)
- IP: 67
- Rigging: Universal operating position; Removable surface mount adaptor; C-clamp adaptor
- Accessories: Top hat, Half top hat, Barndoor module, C-clamp adaptor, Surface mount adaptor
- Legal:
ColorStrobe IP™ is a trademark of Robe lighting s.r.o.
ColorStrobe IP™ IP is patented by Robe lighting s.r.o. and is protected by one or more pending or issued patents

Powerful strobe in color for outdoor exposures. Add color into your outdoor blinding strobing sequences with the ColorStrobe IP to achieve dyed effects, white flashing with colorful backgrounds or continuous bright light output with colored animations.

Ultimately controllable, super fast bursts of high-powered pulses can be adjusted in frequency, duration and intensity, optically harnessed from the 60x High Power RGBW LED chips.

ColorStrobe IP is easy to rig and program, using direct segment control or predefined macros. A high IP rating of 67 provides the reliability required for the most demanding projects, including permanent installations or temporary events.

The compact size and of the ColorStrobe IP combined with its adaptability make installation a smooth and streamlined process.





Eye – popping UV effects with visible indigo glow combined with bright white strobe-blinder effects is making this product a truly unique on the market.

Ultimately controllable, configurable and arrayable.

Super fast bursts of high-powered pulses can be adjusted in frequency, duration and intensity, optically harnessed from the 40x High Power White LED chips and 80x High Power UV LED chips.

UV Strobe is easy to rig individually or in multiples and easy to program using direct segment control or predefined macros.

Fitted with the standard Robe RNS touch screen system with DMX, RDM, Art-Net, MA Net and sACN protocols. Optional wireless DMX module.

Technical Specification

- Light source type: 80x 385nm UV + 40x 15W White LED chips
- Lifetime: min. 16.000 hours
- Typical lumen maintenance: 70% @ 16.000 hours
- High efficient component optics
- Beam angle: 32° (1/2 beam), UV 38° (1/2 beam), 60° (1/10 beam)
- 12 individually controllable segments (3 lines nad 4 columns)
- Strobe duration: 13 - 860 ms
- Strobe rate: 0,3 - 30 Hz
- Strobe effect: Ramp up, ramp down, ramp up-down, random flash, single flash
- High resolution electronic dimming
- Setting & Addressing: QVGA Robe touch screen with battery backup, gravitation sensor for auto screen positioning, operation memory service log with RTC, stand-alone operation with 3 editable programs (each up to 88 steps), built-in analyser for easy fault finding
- Wireless CRMX™ technology from Lumen Radio (on request)
- DMX Protocol modes: 4
- Control channels: 8, 20, 3, 4
- Dimmer: 8 or 16 bit
- Power consumption: 660W
- Power in connector: Neutrik powerCON
- DMX and RDM data in/out : Locking 5-pin XLR
- Ethernet port in/out: RJ45
- Weight: 14.3 kg (31.5 lbs)
- IP: 22
- Rigging:
 - Horizontal or vertical mounting positions
 - Universal operating position
 - Mounting points with 2 pairs of 1/4-turn locking points
 - 2x Omega adaptors with 1/4- turn quick locks
 - UV Strobe - Multipoint segment locking for big truss installation
 - UV Strobe Lite - One pair of 1/4 turn locking points, 1x Omega bracket with 1/4 turn quick locks
- Removable floor stand
- Accessories:
 - Accessory frame adaptor and gel frame
 - Gel frame
 - Barndoor
 - Floor stand
 - Stacker
 - Line cords powerCON In
 - Single Top Loader Case
 - Quad Top Loader Case
- Legal:
 - UV Strobe™/UV StrobeLite™ are trademarks of Robe lighting s.r.o.
 - UV Strobe™/UV StrobeLite™ are patented by Robe lighting s.r.o. and are protected by one or more pending or issued patents





Extending the ROBE series of retro style lighting, PATT 2017 is LED driven environmentally conscious and can be a playfully colorful or adaptable tungsten white-like eye candy effect for the stage and set - perfect for bands, television, film and general prop lighting.

Lighting fixtures can be more than a practical necessity – the luminaires themselves can be a piece of art and create the mood.

This fixture is based on an idea conceived by lighting designer Tim Routledge.

The 7x30W RGBW LEDs powerfully illuminate the sleek, spun aluminium body which maximises its curves to look as good on stage as the performers it illuminates.

Besides controlling the complete LED cluster as one unit, it is possible to control each single LED independently, creating smooth animations, transitions and rainbow effects on the aluminium reflector having the special „PATT“ gold-brown coating.



Technical Specification

- Light source type: 7 x 30W RGBW multichips
- LED life expectancy: min. 20.000 hours
- Typical lumen maintenance: 70% @ 20.000 hours
- 550mm parabolic aluminium reflector with high reflectivity coating
- Diffusor dome distributing light evenly from RGBW LED source inside of the reflector
- Colour mixing mode RGBW or CMY
- Individual control of each RGBW pixel
- Variable CTO: 2.700K - 8.000K
- Virtual Colour Wheel: with 66 preset swatches
- Pre-programmed pixel effects with colour, dimming and strobe chases, waves and pulses at variable speed and direction
- Shutter: Electronic with variable speed strobe (max.20 flashes per second)
- Pre-programmed random strobe & pulse effects
- High resolution electronic dimming: 0 - 100%
- PATT Driver: external
- Setting & Addressing: two-row LCD display & 4 control buttons
- Protocols: USITT DMX-512, RDM, ArtNet, Kling-Net, sACN
- Wireless CRMX™ technology from Lumen Radio (on request)
- DMX Protocol modes: 6
- Control channels: 13, 32, 40, 47, 53, 60
- RGBW or CMY: 8 or 16 bit (internal 18 bit)
- Dimmer: 8 or 16 bit (internal 18 bit)
- PATT2017 connection: Power and Data in: Locking 4-pin XLR
- PATT Driver connection: Input voltage range: 100 - 277 V, 50/60 Hz
Power consumption: 240 W
Power in/out connector: Neutrik powerCON TRUE1 in/out
DMX and RDM data in/out: Locking 3-pin & 5-pin XLR
Embedded Ethernet switch 10/100 Mbps: 1x IN/1x Out
Ethernet port in/out: RJ45
Power and Data out: Locking 4-pin XLR (from PATT Driver to the pixelPATT)
- Weight: PATT2017: 7.2 kg (15.9 lbs), PATT Driver: 3 kg (6.6 lbs)
- PATT2017 Rigging: Mounting points: M12 mounting for clamp or spigot
Operating position: any operating and mounting position
- PATT Driver rigging: Mounting points: 1x Half-couple clamp, 1x Safety attachment point
Operating position: Floor standing or mounted on truss in vertical position
- Accessories: Floor stand, Spigot, Doughty Trigger Clamp, Safety wire, Line cords powerCON TRUE1 In, Line cords powerCON TRUE1 In/Out, Interconnecting cable 4-pin XLR 5m, Interconnecting cable 4-pin XLR 10m, Single Top Loader Case, Dual Top Loader Case
- Legal: PATT 2017™ is trademark of Robe lighting s.r.o.
PATT 2017™ is patented by Robe lighting s.r.o. and is protected by one or more pending or issued patents





Continuing the retro style lighting design, the pixelPATT is a new addition to the PATT family. In spite of its eye catching retro design, pixelPATT is based on modern LED pixel controlled technology.

The pixelPATT is composed of 7 x 30W RGBW LED multi-chips, one in the centre surrounded by a ring of six, housed in a super-slim and lightweight brushed metal frame.

Aesthetically it keeps the dimensions and attractive curvature of the PATT 2013 and the picklePATT, and this will also make it desirable for its physical appearance as well as for a light source. In order to make the pixelPATT elegant and a lightweight design, it has a remote Power and Data box PATT Driver, which is connected with the pixelPATT through an industry standard colour scroller cable with 4-pin XLR connectors.

The pixelPATT is an ideal fixture for television broadcasts, concerts, fashion shows or any type of event from awards to brand activations.



Technical Specification

- Light source type: 7 x 30W RGBW multichips
- LED life expectancy: min. 20.000 hours
- Typical lumen maintenance: 70% @ 20.000 hours
- 7 x 200mm parabolic aluminium reflector with special gold-brown coating
- 7x half-ball diffuser dome distributing light evenly from RGBW LED source inside of the reflector
- Colour mixing mode: RGBW or CMY
- Individual control of each RGBW pixel
- Variable CTO: 2.700K - 8.000K
- Virtual Colour Wheel: with 66 preset swatches
- Tungsten lamp emulation at whites 2.700 K and 3.200 K (red shift and thermal delay)
- Pre-programmed pixel effects with colour, dimming and strobe chases, waves and pulses at variable speed and direction
- Shutter: Electronic with variable speed strobe (max.20 flashes per second)
- Pre-programed random strobe & pulse effects
- High resolution electronic dimming: 0 - 100%
- PATT Driver: external
- Setting & Addressing: two-row LCD display & 4 control buttons
- Protocols: USITT DMX-512, RDM, ArtNet, Kling-Net, sACN
- Wireless CRMX™ technology from Lumen Radio (on request)
- DMX Protocol modes: 6
- Control channels: 13, 32, 40, 47, 53, 60
- R,G,B,W colour mixing: 8 or 16 bit (internal 18 bit)
- Dimmer: 8 or 16 bit (internal 18 bit)
- pixelPATT connection:
Power and Data in: Locking 4-pin XLR
- PATT Driver connection:
Power supply: Electronic auto-ranging
Input voltage range: 100-277 V, 50/60 Hz
Power consumption: 240 W
Power in/out connector: Neutrik powerCON TRUE1 in/out
DMX and RDM data in/out: Locking 3-pin & 5-pin XLR
Embedded Ethernet switch 10/100 Mbps: 1 x In/ 1x Out
Ethernet port in/out: RJ45
Power and Data out: Locking 4-pin XLR (from PATT Driver to the pixelPATT)
- Weight:
pixelPATT: 11.8 kg (26 lbs), PATT Driver: 3 kg (6.6 lbs)
- pixelPATT rigging:
Mounting points: 1x 13mm hole for Clamp mounting
Operating position: any operating and mounting position
- PATT Driver rigging:
Mounting points: 1x Half-couple clamp, 1x Safety attachment point
Operating position: Floor standing or mounted on truss in vertical position
- Accessories: Doughty Trigger Clamp, Safety wire, Line cords powerCON TRUE1 In, Line cords powerCON TRUE1 In/Out, Interconnecting cable 4-pin XLR 5m, Interconnecting cable 4-pin XLR 10m, Single Top Loader Case, Dual Top Loader Case
- Legal:
pixelPATT 2017™ is trademark of Robe lighting s.r.o.
pixelPATT 2017™ is patented by Robe lighting s.r.o. and is protected by one or more pending or issued patents.





Halo - a new exciting dimension in led pixel lighting for stage and set.

A circle of encapsulated bright micro-pixel led's, mounted on a standard size Parcan colour frame, Halo can bring the classic fixtures back into the latest lighting designs or be used alone to add many new dimensions and effects.

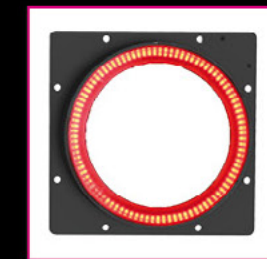
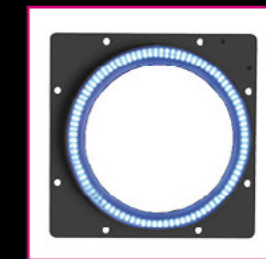
Controlled via DMX, the operator can quickly and simply program the most sophisticated effects using the internal content generator or switch to display pixel mapped video content.

The system consists of 6 frames of RGB led's and a 6 way data controller/driver in the familiar colour-scroller truss-hanging format.

The system is interconnected using the industry standard 4pin XLR scroller cables that are already part of most lighting company inventories.

Technical Specification

- Light source type: 192 x 0,25W RGB LED multichip
- Led Life Expectancy: minimum 10.000 hours
- Typical Lumen Maintenance: 70% @ 10.000 hours
- Efficient component optics
- Viewing angle 160 Deg
- RGB colour mixing
- 2 Layer personality enabling x-fade, snap or mix between effects / states
- Pre-programmed pixel animation effects per layer; waves, paparazzi, comets, sweeps
- Pre-programmed effects manipulated by dimmer, colour, rotation, direction
- Strobe effect with variable speed
- Protocols: USITT DMX-512
- Protocol modes: 4
 - RGB Static: 3 DMX channels per Halo
 - Strobe: 3 DMX channels per Halo
 - Individual personality: 24 DMX channels per Halo
 - Group personality with added dynamic selectable Pixel Mapping option:
 - 456 DMX channels per HALO Driver
 - 1-24 : Group personality - controls all 6 Halos
 - 25-96 : Halo 1 pixel DMX channels
 - 97-168 : Halo 2 pixel DMX channels
 - 169-240 : Halo 3 pixel DMXchannels
 - 241-312 : Halo 4 pixel DMX channels
 - 313-384 : Halo 5 pixel DMX channels
 - 385-456 : Halo 6 pixel DMX channels
- R, G, B colors: 8-bit
- Dimmer: 8-bit
- Contiguous addressing (HALO Driver start address maps to Halo 1)
- Power supply: Electronic auto-ranging
- Input voltage range: 100–240 V, 50-60 Hz
- Power consumption: 320 W @ 230 V / 50-60 Hz, 50 W per. HALO frame
- HALO RGB connection: Locking 4-pin XLR
- HALO Driver connection:
 - Data in/out: Locking 5-pin XLR
 - Power in/out: Neutrik powerCON TRUE1
 - 6 zone HALO RGB outputs: 6x Locking 4-pin XLR
 - Combined power/data output for each HALO frame
- Weight: HALO RGB 0.8 kg (1.8 lbs), HALO Driver 3.9 kg (8.6 lbs)
- HALO RGB rigging:
 - Fits to PARcan 64 gel frame holder
 - Can be merged to digital canvas via 8 mounting holes
- HALO Driver rigging:
 - 1 x Omega bracket
 - 1 x safety attachment point
- Accessories: Canvas joints, Safety wire, 4-pin XLR cables
- Legal:
 - HALO RGB™ and HALO Driver™ are trademarks of Robe lighting s.r.o.
 - HALO RGB™ and HALO Driver™ are patented by Robe lighting s.r.o. and are protected by one or more pending or issued patents



Divine™ 160 RGBW



The Divine 160 is a high-performance 440W luminaire with phenomenal light output that can be used for a variety of entertainment and architectural lighting scenarios including the application of dynamic colour changing effects to building exteriors and façades, or illuminating complete areas with subtle CCT controllable white light.

The Divine is available in numerous configuration options including optics for flood or accent lighting. RGBW, SmartWhite or PureWhite in a variety of colour temperatures combined with different mounting options and accessories make Divine a truly flexible solution.

A high IP rating of 67 and 5-year warranty underline the reliability required for the most demanding projects, be they permanent installations or temporary events. The compact size and low weight of the Divine combined with its adaptability make installation a smooth and streamlined process.

Technical Specification

- Light Source: 40x Multichip LEDs
- Input Voltage: 100-277V AC 50/60 Hz
- Typical Power Consumption: 440W, +/-10%
- Colour Variants: RGBCW (W-6500K), RGBNW (W-4000K), RGBWW (W-3200K), PW (2700K, 4000K, 6500K), SW (2700-6500K), Red/Green/Blue/White, Pure White, Smart White
- Lumen Output Delivered: 11274lm (RGBW at 15°)
- Beam Angle: RGBW: 15°, 23°, 40°; PW/SW: 13°, 24°, 40°
- Projected Lumen Maintenance: 60.000 hrs (L70@ 25°C / 77°F)
- Interface Protocol: USITT DMX512 RDM, 0-10V (for Single Color Variants)
- Wireless DMX (Option): Lumen Radio CRMX Technology
- Control System: Anolis Lighting Controls or any Third Party Controllers
- Stand Alone Control
- Power Supply: Integral
- Housing: High Pressure Die-Cast Aluminium Body; Tempered Glass
- Finish Options Standard: Silver (Upcharge Option: Black/White/Custom RAL)
- Fixture Cable and Connections: Li9YC11Y Cable 3xAWG16+1x(2xAVG24) -(optional); Integrated Junction Box w/Terminal Block
- Mounting Method: Surface Mount, C-Clamp
- Adjustability: +35°/ -90°
- Protection Factor: IP67 /Suitable For Wet Locations
- IK Rating: IK10
- Cooling System: Convection
- Operating Ambient Temperature: -20°C / +40°C (-4°F / +104°F)
- Max. Housing Temperature: 80°C (176°F)
- Total Heat Dissipation: 1500 BTU/h (calculated)
- Weight: 13.3 kg / 29.3 lbs
- Listings: ETL / cETL, CE, RoHS pending
- Accessories: Surface Mount Adaptor (Included), Top Hat, Half Top Hat, Wire Guard/Anti-Glare, C-Clamp Adaptor
- Legal: Divine™ 160 RGBW is a trademark of Robe lighting s.r.o. Divine™ 160 RGBW is patented by Robe lighting s.r.o. and is protected by one or more pending or issued patents

Technical Specification

- Light Source: 60x UV LEDs
- Input Voltage: 100-277V AC 50/60 Hz
- Typical Power Consumption: 160W, +/-10%
- Wave Length: 365nm
- Beam Angle: 38°
- Interface Protocol: USITT DMX512 RDM, 0-10V
- Wireless DMX (Option): Lumen Radio CRMX Technology
- Control System: Anolis Lighting Controls or any Third Party Controllers
- Stand Alone Control
- Power Supply: Integral
- Housing: High Pressure Die-Cast Aluminium Body, Tempered Glass
- Finish Options Standard: Silver (Upcharge Option: Black/White/Custom RAL)
- Fixture Cable and Connections: Li9YC11Y Cable 3xAWG16+1x(2xAVG24) -(optional), Integrated Junction Box w/Terminal Block
- Mounting Method: Surface Mount, C-Clamp
- Adjustability: +35°/ -90°
- Protection Factor: IP67 /Suitable For Wet Locations
- IK Rating: IK10
- Cooling System: Convection
- Operating Ambient Temperature: -20°C / +40°C (-4°F / +104°F)
- Max. Housing Temperature: 80°C (176°F)
- Total Heat Dissipation: 680 BTU/h (calculated)
- Weight: 14.3 kg / 31.5 lbs
- Listings: ETL / cETL, CE, RoHS pending
- Accessories: Surface Mount Adaptor (Included), Top Hat, Half Top Hat, Wire Guard/Anti-Glare, C-Clamp Adaptor
- Legal: Divine™ 60 UV is a trademark of Robe lighting s.r.o. Divine™ 60 UV RGBW is patented by Robe lighting s.r.o. and is protected by one or more pending or issued patents

The Divine 60 UV is a breakthrough in true UV illumination - a 160 Watt all-LED luminaire providing superb UV output levels at 365 nm. Precision UV-stable components are housed in an IP67 rated casing with flexible mounting options enabling rapid installation, making it perfect for themed environments and events of all types.

Inbuilt DMX and RDM control facilitates the accurate setting of light levels, and a wireless control option allows retro fitting into existing installations without needing additional control infrastructure.

Perfectly suited for both indoor and outdoor environments, the Divine 60 UV as an ideal choice for theatres, theme parks, attractions, leisure facilities and entertainment events requiring a true UV 'black light' effect.





The first in a range of high performance specialist luminaires, the Ambiane downlight is suitable for ambient lighting applications, wall washing and accent lighting.

Available in RGBW and tuneable white CCT versions with a variety of beam angles, the Ambiane has no UV or IR output and is cool running, therefore appropriate for the widest range of applications.

With both DMX and DALI control options, combined with a superefficient LED source and high quality reflectors for optimum light output, the Ambiane can produce truly dramatic results!

This versatile product is ideal for theatres, concert halls, auditoriums, ball rooms, hotel and commercial building foyers, lounges, restaurants, retail environments, offices, meeting rooms, multiplex and home cinemas.



Technical Specification

- Light Source: 24 x High Power Single Chip LEDs
- Input Voltage: 24V DC
- Typical Power Consumption: 40W
- Colour Variants: RGBW, Red/Green/Blue/CoolWhite
- Beam Angle (w/anti-glare ring): 63°, 80°
- Lumen Output (Delivered):
1507 lm (RGBW at 63°, with anti-glare ring),
1364 lm (RGBW at 80°, with anti-glare ring)
- Projected Lumen Maintenance: 50.000 hrs (L70@ 25°C / 77°F)
- Control System: DMX512, DALI
- Address Setting: DIP Switch
- Power Supply:
ArcPower CLG-60-24 MW or Third Party 60W/24V
- Housing: High Pressure Die-Cast Aluminium, Plastic Cover
- Finish Options (Front Frame): White (Standard), Black/Silver/Custom RAL (Cost Option)
- Fixture Cable and Connections: Terminal Block
- Mounting Method: Recessed, Via Two Spring Clips. Cut-out Diameter: 212mm /8.34 in
- Protection Factor: IP20 (Option: IP54 with attached front diffuser glass)
- IC Rating: Non-IC Rated
- Cooling System: Convection
- Operating Ambient Temperature: -20°C / +40°C (-4°F / +104°F)
- Total Heat Dissipation: 136 BTU/h (calculated)
- Weight: 1,8 kg / 4.0 lbs
- Listings: ETL / cETL, CE, RoHS pending
- Accessories: Anti-glare Ring (detachable), Diffuser Glass - for IP54 version (Optional)
- Legal:
Ambiane™ RGBW is a trademark of Robe lighting s.r.o.
Ambiane™ RGBW is patented by Robe lighting s.r.o. and is protected by one or more pending or issued patents

Technical Specification

- Light Source: 30x High Power Single Chip LEDs
- Input Voltage: 24V DC
- Typical Power Consumption: 40W
- Colour Variants: TW (Tunable White), TD (Tungsten Dimming), PW (Pure White)
- Beam Angle (w/anti-glare ring): 63°, 80°
- Lumen Output (Delivered):
1082lm (TW 3200K, at 63°, with anti-glare ring),
2393lm (TW 6000K, at 63°, with anti-glare ring),
989lm (TW 3200K, at 80°, with anti-glare ring),
2146lm (TW 6000K, at 80°, with anti-glare ring)
- Projected Lumen Maintenance: 50.000 hrs (L70@ 25°C / 77°F)
- Control System: DMX512, DALI
- Address Setting: DIP Switch
- Power Supply:
ArcPower CLG-60-24 MW or Third Party 60W/24V
- Housing: High Pressure Die-Cast Aluminium, Plastic Cover
- Finish Options (Front Frame): White (Standard), Black/Silver/Custom RAL (Cost Option)
- Fixture Cable and Connections: Terminal Block
- Mounting Method: Recessed, Via Two Spring Clips. Cut-out Diameter: 212mm /8.34 in
- Protection Factor: IP20 (Option: IP54 with attached front diffuser glass)
- IC Rating: Non-IC Rated
- Cooling System: Convection
- Operating Ambient Temperature: -20°C / +40°C (-4°F / +104°F)
- Total Heat Dissipation: 136 BTU/h (calculated)
- Weight: 1,8 kg / 4.0 lbs
- Listings: ETL / cETL, CE, RoHS pending
- Accessories: Anti-Glare Ring (detachable), Diffuser Glass - for IP54 version (Optional)
- Legal:
Ambiane™ TW, TD, PW is a trademark of Robe lighting s.r.o.
Ambiane™ TW, TD, PW is patented by Robe lighting s.r.o. and is protected by one or more pending or issued patents

The New Ambiane range of white and tuneable white downlights offers various performance options creating the perfect white light environment for the widest range of applications. Available in 3 formats Ambiane is a versatile downlight solution.

Ambiane TD (Tungsten Dim) utilises high technology electronics reducing the luminaire's colour temperature when dimmed. With Anolis' ultra-smooth 18 bit dimming, variations in warm white light from 3200K down to 1000K are achievable, giving Ambiane™ TD the true feel of a traditional incandescent dimming curve.

Ambiane TW (Tuneable White) has the same technology and 18 bit dimming, and delivers impressive output with a CCT range from a warm 2700K to a clean, bright 6500K. Adjusting the colour temperature can change the mood of any environment.

Ambiane PW (Pure White) - perfect solution when a fixed colour temperature is required. Available in a variety of colour temperatures (2700K, 3200K, 4000K, 5000K, 6500K). Ambiane™ PW can create the desired effect.



ZOOM^{IN}_{OUT}



www.150zoom.cz



LEDBeam 150™ Zoom

ParFect 150™ Zoom

www.150zoom.cz

ROBE[®]
www.robe.cz

2017

S M E N



ROBE®

Head office: ROBE lighting s. r. o. | Hážovice 2090 | 756 61 Rožnov pod Radhoštěm | Czech Republic | Tel.: +420 571 751 500 | Fax: +420 571 751 515 | E-mail: robe@robe.cz | **Factory:** ROBE lighting s. r. o. | Palackého 416 | 757 01 Valašské Meziříčí | Czech Republic | Tel.: +420 571 751 500 | Fax: +420 571 751 515 | E-mail: robe@robe.cz | **UK:** ROBE UK Ltd. | Northampton | United Kingdom | Tel.: 01604 741000 | E-mail: info@robeuk.com | **France:** ROBE Lighting France SAS | ZI Paris Nord 2 | Bâtiment Euler | 33, rue des Vanesses | 93420 Villepinte | Tel.: +33 1 48 63 84 81 | Fax: +33 1 48 63 84 87 | E-mail: info@robelighting.fr | **America:** ROBE Lighting Inc. | 12349 SW 53rd Street, Suite 202 | Cooper City | Florida | USA | Tel.: +1 954 680 1901 | E-mail: info@robelighting.com | **Asia and Pacific:** Robe Lighting Asia Pacific Pte. Ltd. | 12 New Industrial Road | #02-05 Morningstar Centre | S-536202 | Singapore | Tel.: +65 6280 8558 | E-mail: sales@robeap.com | **Middle East:** Robe Middle East trading LLC | Office Nbr 507 5th floor | Al Asmawi Building DIP 1 | Dubai | UAE | Po Box: 391 898 | Tel.: +971 4 885 3223 | E-mail: info@robe-me.com | **Russia and CIS:** Taganskaya str. 26-1-72 | 109004 Moscow | Russia | Tel.: +7 495 504 9569 | E-mail: info@roberussia.com | **Central and South America:** Galicia 1198 ap 303 | 1100 Montevideo | Uruguay | Tel.: +5989 2900 67 47 | E-mail: info@robecea.com

April 2017 © ROBE lighting s. r. o. All specifications subject to change without notice. Patents pending.

www.robe.cz

VOL. 1