

# FREEDOM

## Lighting Control Desk



**“...IT’S ONLY THE START OF A REVOLUTION”**

The state of the art lighting and show control tool when more multi-parameter instruments are needed to be controlled and fast access is required. Together with the LIBERTY console this range is ideal for all venues seeking a fully integrated solution to control conventional and moving lights as well as LED sources and other modern equipment in a portable package.

FREEDOM features four additional rotary wheels with pushbutton function and a super smooth large size trackball for precision positioning control. Updated with a Moving Light library, including over 5900 fixtures, FREEDOM allows users to control quantities of multiple LED fittings, intelligent lights or media servers as well as the standard generic dimming systems.

Four physical DMX outputs and one physical DMX512 input on board with 5 pole standard XLR connection sockets can be used in case no ETH-ERNET network is available.

Highly intuitive thanks to the graphical user interface and powered by the HATHOR software this desk meets the sophisticated needs of all lighting professional. The lighting control desk philosophy has been specifically designed for theatre stage lighting without any compromise.

FREEDOM is available in five basic configurations controlling channel numbering from 120 to 2048 multi-parameter lighting instruments and can address up to 32 universes via suitable networks. Synchronised backup is optionally available. FREEDOM consoles perform as standalone or as a client consoles in an extended networked system. Networked FREEDOM consoles will support multi-user / multi-operator setups with optional software packages and hence works perfectly together with other control desks powered by HATHOR software.

FREEDOM comes with an SSD disk drive, which makes the console extremely silent and improves the boot-up time.

# FREEDOM

## Software Features

### Channels

- 16384 outputs / parameters.
- 120/240/360/512/1024/2048 control channels (multi-parameter lighting instruments) such as LED fixtures, Moving Lights, Video Servers, Smoke Machines etc... (Retrofit upgrade of channel count possible by optional upgrade kits).

### Available Control Protocols

- ArtNET, Sandnet, Pathport, sACN, and many others.
- RDM ready
  - ACN E1.31 ready

### Specifications

- 2048 DMX - outputs (on 4 physical XLR5F connectors)
- 32 adressable (DMX) universes; up to 16384 parameters via ETHER-NET.
- 2000 groups
- 15000 presets (cues)
- 1000 looks
- 24 playbacks
- 1000 sequences (cue lists)
- Individual special timed transitions for each parameter
- 1000 chasers
- 1000 effect templates
- 100 dimmer curves
- 1000 gel strings
- 16000 palettes (2000 palettes/attribute group)
- 8 attribute groups
- 100 instruments layouts
- 192 virtual submasters (assignable in banks to physical faders)
- 1000 submasters pages
- Virtuality unlimited screen's user layouts (stored to hard drive of control desk)
- 100 panels

### Operational Features

- RPN (Reverse Polish Notation) and "AT"-Mode style user input selectable.
- Graphical User interface with 2D views (Channel's layouts) which let the operator working directly on the light plot, with selection options (full mouse support, with extensive and intuitive use of drag'n drop and local menus).
- Track Window allows editing of cues via Editor for Instrument parameters and intensities. Times and values can be edited, by numeric entry or by using dropdown lists. Tracking of all referenced objects such as Presets, Palettes, Groups, color frames and recorded Fader play-backs.
- Instrument Window :
  - o Channels as Instruments, combining one or several types of devices such as dimmers, color changers, yokes and moving lights into one single Instrument.
  - o Graphical device and dimmer patch with user definable curves.
  - o Channel and Dimmer Live Test.
- Cues organization by Free Sequence using Presets as reference, or Cue List.
- Drag'n drop facilities to copy/paste or move steps (cues) in the sequence.
- Each step (cue) can be edited Live or Blind, channel by channel and parameter by parameter for values and crossfade times.
- Attribute recordings as independent objects in the sequence.
- Time line representation and editing of timed transitions.

- Submasters
  - o Rubberband functionality and Auto-execute look functionality for parameter control through faders.
  - o Fader content and play-back can be recorded in the sequence.
- 7 basic Palette Attribute's Groups as : Focus, Color, Beam, Pattern, Extra, All, Dynamics.
- Reference Palettes and No reference Palettes.
- Recording possibilities : Direct or Drag'n drop / Filters.
- Palettes fully editable.
- Tracking mode or non-tracking mode for intensity in a Cue Sequence, defined by user.
- Tracking mode for fixture's parameters with history background, editing and clean-up functions.
- Extensive Factory Template Library as well as user definable templates with 16 bit resolution for any parameter and intensities.
- Complete Template builder included, with direct access and live template modifications and check.
- Copy Attributes command to copy parameter's data from one luminaire to others of the same type.
- Fetch Position command to copy parameter's data from one cue in the list to stage for a selection of devices.
- Replace Fixture function to exchange one device for another one of different type.
- Play (show) browser allowing offline browsing and editing of shows not currently loaded.

### Colour Scroller Tools

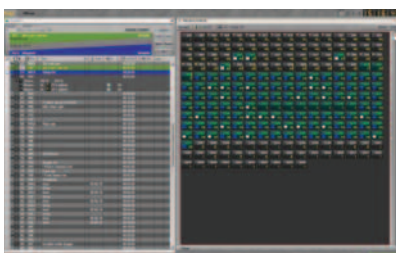
- Gel strings builder with colour filters images and manufacturer references.
- Individual frame calibration.
- Gel strings are objects you can copy, paste, move, import and export.
- Live gel string modification and check.
- Extensive gel library for onscreen display of color frame for color changers.
- Direct display of the colour frame in the channel box.
- Direct access with frame button or gel picker.

### Devices Tools

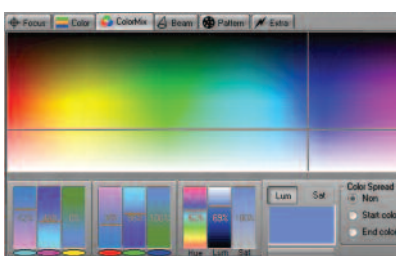
- Color Picker / Gobo Picker.
- Beam tools.
- Parameter entries in % or in degrees.
- Pan invert /Tilt invert functions on input (without any consequences on show's data).
- Attributes are executed as "Move while Dark" as default by preference. The chosen behavior can be always overridden at any level while recording or editing.

# FREEDOM

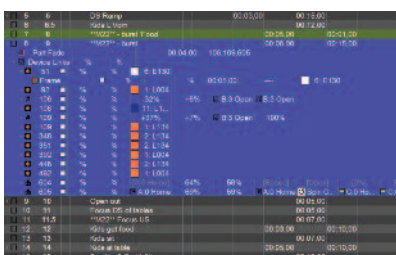
## Hardware Features



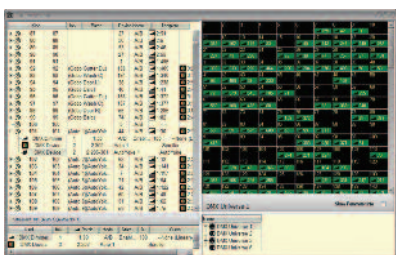
### General Configuration



### Color picker



### Sequence Organisation



### Patch's Window

### Screens Layouts

- At initial system start a default screen layout organization is present. This default layout can be re-loaded at any time.
- Infinite possibilities to organize screens.
- Four sub-screens per monitor.
- Multiple windows per sub-screen.
- STORE and LOAD functions (User Layouts).
- Individual dynamic zoom of all editors and browsers.

### Intuitive and Contextual Functions

- Objects such as Channels, Palettes, and Presets can be dragged and dropped from one place to another, generating very intuitive pop-up menus. Objects such as Channels, Palettes and Presets can be selected and activated directly by finger tap.

### Playbacks

- 1 Grandmaster with Blackout key.
- 24 physicals Submasters with assign key and Flash key.
- Modes: Solo / Inhibit / Focusing / Rubberband & Auto-execute look.
- Loading possibilities: Channels, Groups, Presets, Looks.
- Chasers, Attributes and Palettes.
- 1 Master Playback 100 mm (Sequential Theatrical Crossfade).
- GO / GO BACK / PAUSE / Jump / SEQ- & SEQ + keys.
- 1 Intensity / Speed control wheel.

### Keypad

- Status information LCD.
- Channel selection: +, -, Thru, +%, -%, At Level, All and Invert commands.
- RECORD/UPDATE for Presets, Looks, Groups, and Palettes with filtered options.
- Direct Frame (Gel String Colour) key.
- Direct Numeric entry for SEQUENCE Times and Special Times.
- Direct Numeric entry for PARAMETER Times.

### Integrated 10.1" Colour Touchscreen

- 5 Dedicated keys for very quick related content display:
  - SEQUENCE
  - SUBMASTERS
  - CHANNELS
  - MOVING LIGHTS CONTROL
  - User Screen

### Moving Light Controls

- 4 rotary Wheels with Pushbutton function.
- 1 Trackball 50 mm.

### Power Requirements

- Power supply cable: CEE22 connector
- Power supply: 50/60 Hz, 100 - 240 V, 7 A - 3.5 A

### Connections

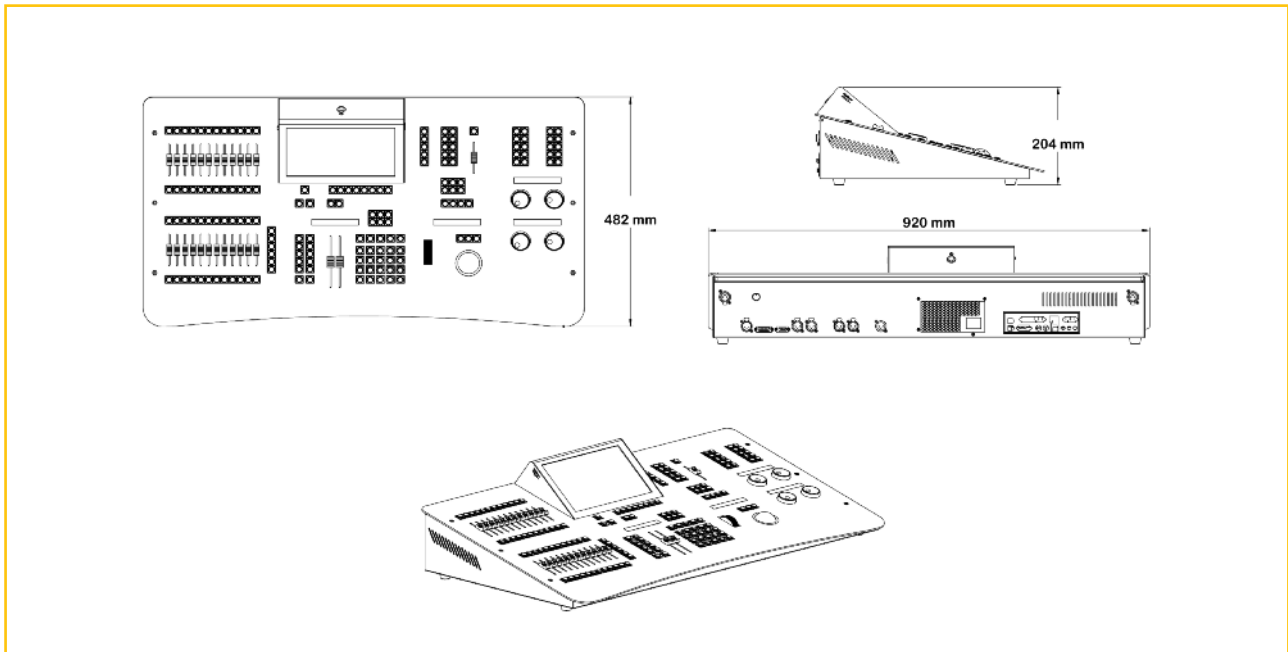
- 4 DMX512 XLR 5 pins female.
- 1 DMX512 XLR5 pin male.
- 1 ETHERNET RJ45.
- 1 D-Sub connector – 8 external lines for remote triggering.
- 6 USB PORTS.
  - 1 USB located on front panel.
- 2 Video outputs:
  - analog video output: 1 SVGA connector
  - digital video output: 1 DVI-D connector
- 1 HDMI connector
- 1 AUDIO In XLR 3 pins female.
- 2 Desk lamp supply: 12 V – 400 mA – 5 W XLR 3 pins female, dimmable.
- 1 PS2.
- 1 S.A.T.A. port.

### Physical Specifications

- Dimensions: 920 x 482 x 204 mm
- Weight Console: 18 kg
- Operating temperature range: from + 5 °C to + 35 °C.
- Humidity: relative humidity not more than 95% non-condensing.

# FREEDOM

## Ordering Information



Description	References
<p> <b>FREEDOM - 120 channels</b>  <b>FREEDOM - 240 channels</b>  <b>FREEDOM - 360 channels</b>  <b>FREEDOM - 512 channels</b>  <b>FREEDOM - 1024 channels</b>  <b>FREEDOM - 2048 channels</b> </p> <p>Supplied with: alphanumeric keyboard and mouse, supply cable, dust cover, Quick Start user manual and system restore DVD.</p>	<p>           FREEDOM/120            FREEDOM/240            FREEDOM/360            FREEDOM/512            FREEDOM/1024            FREEDOM/2048         </p>
<p><b>Hardware Options and Accessories</b></p> <p>For Channel upgrades and Networking options please contact your ADB distribution Partner</p> <ul style="list-style-type: none"> <li>MIDI – USB adaptor</li> <li>22" LCD/TFT monitor</li> <li>24" LED monitor with Multi Touch Integrated</li> <li>XLR3 "gooseneck" desk lamp</li> <li>Flight case for FREEDOM consoles</li> <li>Flight case for 22" Touchscreen Monitor</li> <li>Backup for FREEDOM 120</li> <li>Backup for FREEDOM 240</li> <li>Backup for FREEDOM 360</li> <li>Backup for FREEDOM 512</li> <li>Backup for FREEDOM 1024</li> <li>Backup for FREEDOM 2048</li> <li>Wireless Remote control unit</li> <li>24-Subfader Extension</li> <li>External Power Supply</li> <li>Extension 1.50 m cable</li> </ul>	<ul style="list-style-type: none"> <li>MIDI/USB</li> <li>LCD22</li> <li>LED24/HATH</li> <li>WORKLITE/XLR3</li> <li>FLY/F</li> <li>FLY/M/L</li> <li>RPU/120</li> <li>RPU/240</li> <li>RPU/360</li> <li>RPU/512</li> <li>RPU/1024</li> <li>RPU/2048</li> <li>WIFI/FULL/HAT</li> <li>SUB24/EXT/H</li> <li>EPS/9</li> <li>DB15/15</li> </ul>

DS-1263-E-01r Subject to modifications