

# ACP 1000

625 W / 1000 W / 1250 W

## Cyclorama Lights



Cyclorama light with asymmetrical reflector for use with **gel filter**.

The ACP of cyclorama lights features a unique combination of an asymmetrical reflector and 2, highly reflective side mirrors to provide high quality lighting for both studio and stage applications.

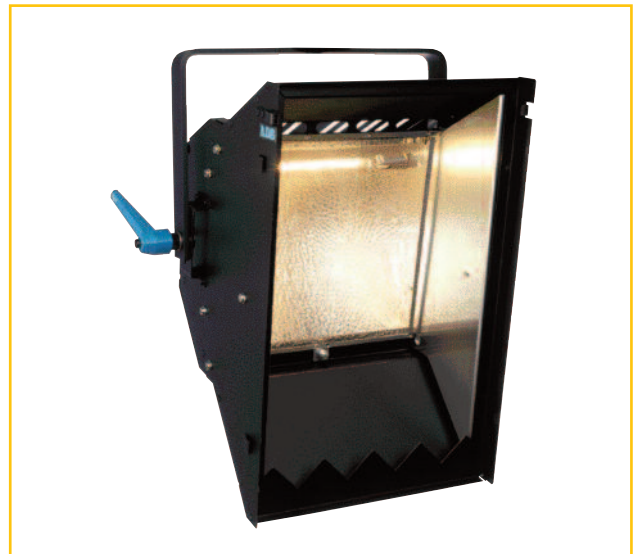
These fixtures are ideal for creating an homogenous light level or for stage set lighting, e.g.

- vertical, even illumination of cyclorama or horizon screen
- diffused back lighting
- asymmetrical soft light

These compact and lightweight luminaires are designed for use with 625 W, 1000 W or 1250 W lamps.

Excellent ventilation by natural convection ensures long life of lamps and filters.

Flexibility is provided by a large choice of single, double, triple or quadruple units assembled in either horizontal, vertical or square formats. Each combination can be supplied for manual or pole operation.



### Supplied with :

- R7S Lampholder
- Safety grid with 3 mm meshing
- filter frame integrated
- 2 m power supply cable (2 x 1.5 + 1.5 mm<sup>2</sup>) without plug

| ACP 1000<br>Cyclorama Lights (A x B x C) |                           | Manual Operation                                    | Pole Operation                                       |
|--|---------------------------|---|--|
|  | Single unit               | <b>ACP 1001</b><br>390 x 450 x 230 mm<br>5 kg       | <b>ACP 1001 P</b><br>395 x 450 x 230 mm<br>6 kg      |
|  | Horizontal double unit    | <b>ACP 1002 H</b><br>730 x 450 x 230 mm<br>11,5 kg  | <b>ACP 1002 H P</b><br>735 x 450 x 230 mm<br>12,5 kg |
|  | Vertical double unit      | <b>ACP 1002 V</b><br>450 x 1010 x 230 mm<br>13 kg   | <b>ACP 1002 V P</b><br>455 x 1010 x 230 mm<br>14 kg  |
|  | Horizontal triple unit    | <b>ACP 1003 H</b><br>1015 x 450 x 230 mm<br>17,5 kg | <b>ACP 1003 H P</b><br>1020 x 450 x 230 mm<br>19 kg  |
|  | Horizontal quadruple unit | <b>ACP 1004 H</b><br>1310 x 450 x 230 mm<br>23 kg   | <b>ACP 1004 H P</b><br>1315 x 450 x 230 mm<br>25 kg  |
|  | Square equadruple unit    | <b>ACP 1004 C</b><br>730 x 1010 x 230 mm<br>25 kg   | <b>ACP 1004 C P</b><br>735 x 1010 x 230 mm<br>27 kg  |

# ACP 1000

## Specifications

### Housing

- Housing made of welded steel sheets.
- High temperature resistant, electrostatically deposited matt black painting.
- Ventilation / heat sinks designed to avoid light spill.
- No noise during heating and cooling phases.

### Filter Frame Cassette

- The filter frame for the ACP 1000 is integrated.

### Clamping

- A strong steel yoke with effective clamping mechanism provides considerable resistance to unwanted movement and vibration. The luminaire can rotate all around its axis.

### Pole Operation

- Built to EN 60598 2-17 standards.
- Smooth control without shocks or vibrations.
- Not sensitive to heat and tilt angle.
- DIN spigot included.

### Optical System

- Asymmetrical reflector and side mirrors of pure, anodised aluminium.

### Electromechanical Parts

- R7s lampholders for 230 V / 625 W, 1000 W or 1250 W tubular halogen lamps.
- 2 m silicon power cable (2 x 1.5 + 1.5 mm<sup>2</sup>) without plug.

### Safety / Reliability

- These equipments comply with all applicable European directives and carry a CE mark.
- Safety screws prevent accidental drop-out of accessories.
- Heat insulated handle.
- All metal components are protected against corrosion.

### Accessories

- |   |           |
|---|-----------|
| • Vertical barndoors                    |           |
| (set of 2 pieces, 1 right & 1 left)     | CFV/ACP   |
| • Horizontal barndoor (one bottom part) | CFH/ACP   |
| • Hook clamp for Ø 21 to Ø 48 mm tubes  | A6        |
| • Hook clamp for Ø 35 to Ø 50 mm tubes  | A20       |
| • Hook clamp for Ø 35 to Ø 50 mm tubes  | A25       |
| • Hook clamp for Ø 45 to Ø 60 mm tubes  | A30       |
| • 1.2 m safety cable                    | CAS 120/N |

### Photometric Data

Typicals values with lamp: 1250 W - 230 V - 3200° K

